

Section 8.0 – Bases Loaded – Starting Position “C” Mechanics

8.1 – General Positioning – Starting Position “C” *with Bases Loaded*

8.1.1 – BU’s Starting Position with the Bases Loaded:

- BU will position on the 3rd base side of the infield.
- BU will position himself midway between the edge of the grass of the pitcher’s mound and the 2nd base cutout,
- BU should position himself so that if an “imaginary” line were drawn from home plate through the left edge of the pitcher’s mound towards 2nd base, BU would be straddling that line.
- BU’s body should be squared to the edge of home plate.
- This position is often referred to as **Starting Position “C”** (see Diagram 8.1.1)

Important Notes:

- The positioning just described refers to fields where the grass lines are as recommended the Official Rules and as shown in **Diagram 8.1.1**. BU will have to adjust accordingly on fields which vary from this standard.
- This is the *same* positioning that will be used with R3 on 3rd base only, R2 on 2nd only, 2nd and 3rd or bases loaded.
- This starting positioning “C” with a runner on 2nd base only is very important, and umpires should make sure that they are *not too deep* towards 2nd base when they assume this position.
- If BU is positioned midway between the mound and 2nd base as described in the previous paragraph, he will be in a good starting position for pick-offs at any base (see **Section 8.2**) as well as other plays to the infield.

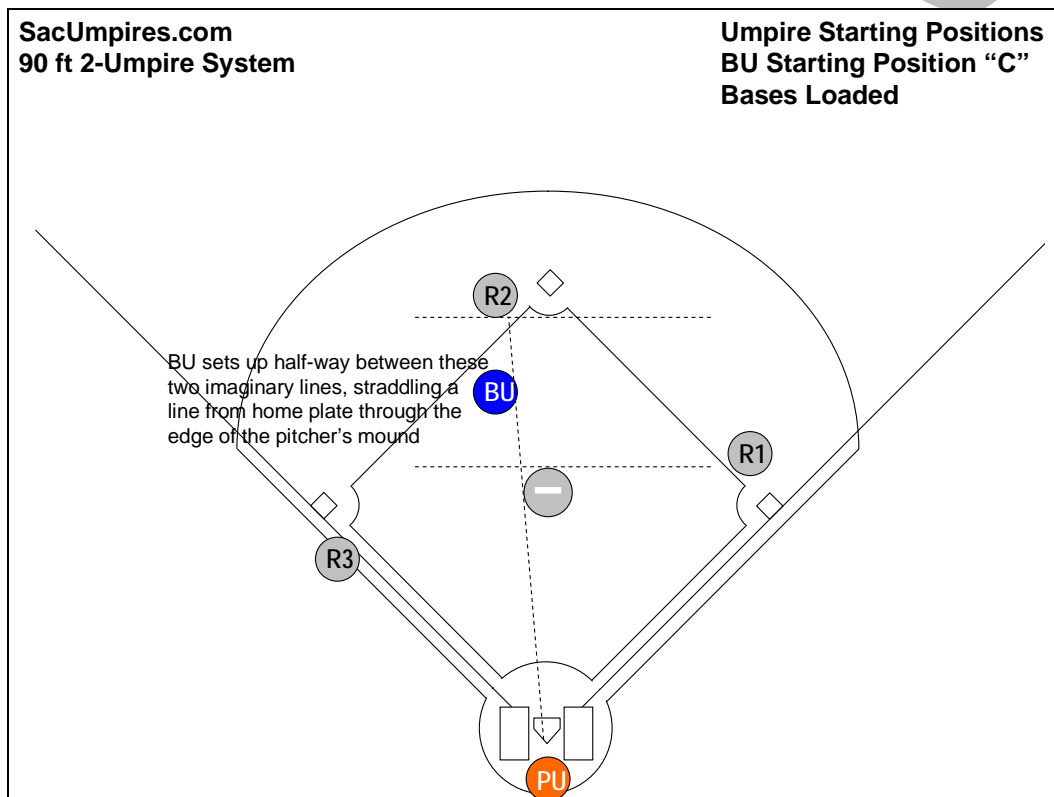


Diagram 8.1.1: Starting Position “C” with the bases loaded.

8.2 – Pick-Offs and Rundowns *with Bases Loaded*

8.2.1 – Proper Starting Position Essential for Pick-Offs When the Bases are Loaded (see Diagram 8.2.1):

- It is very important that BU assume the proper starting position “C” in the middle of the infield with the bases loaded. This starting position is particularly critical when it comes to pick-offs at 1st or 3rd bases because if BU is too “deep” towards 2nd base to start with, he will never be able to get a proper angle for pick-offs at the corners and will end up looking up the back end of those plays.

8.2.2 – Pick-Offs Attempts with Bases Loaded:

• F1 Makes a Pick-Off Attempt at 3rd Base (See Diagram 8.2.2-a):

- As F1 begins his throw to 3rd base, BU may use either of the following two procedures:
 - BU will take a quick step forward with his *right* foot, moving in the direction on an “imaginary” 45-foot line along the 3rd base line. After taking this initial step forward, BU will turn (pivoting on his right foot), face the play and set for the call.
 - BU will take two quick steps forward starting with his *left* foot, moving in the direction of an “imaginary” 45-foot line along the 3rd base line. After taking two steps forward (right followed by left), BU will turn (pivoting on his right foot), face the play and set for the call.

Important Notes:

- The preceding two techniques are very similar; the basic difference being how much time is available and how much distance may be gained during the pick-off move. The second alternative allows BU to take one extra steps towards the 45-foot line before turning and facing the play. Always use the time available wisely and position to see the play well.
- The pick-off from F1 takes little time and means BU has very little time to react, step and set. Two steps on this pick is about all that can be achieved realistically.
- It is *imperative* that BU be *completely stopped and set* for the pick-off.
- It is very important that BU set up in the proper starting position “C”.
- Angle is critical for pick-offs – BU shall move towards an “imaginary” 45-foot line along the 3rd base line.
- BU should be completely stopped and set for the play.
- BU’s body should be facing the play and in a set position for this play.
- F2 Attempts a Pick-Off at 3rd Base:
 - It is possible that F2 may try to pick off R3 at 3rd base with a quick throw following a pitch.
 - BU’s movements would be virtually the same as just described for a pick-off move by F1.
 - **Important Note:** This play develops over a longer time period with F2’s longer delivery and his throw traveling a greater distance. If BU reads F2’s early throwing movements (body language) well, BU should be able to gain more distance on this pick-off for better positioning.
- Attempts a Pick-Off to 1st Base (See Diagram 8.2.2-b):
 - BU should focus on F1 prior to the pick-off.
 - As BU sees F1 begin to throw to 1st base in a pick-off attempt, there are two acceptable methods of covering the play. These two methods differ only in the steps taken by BU as he moves into position for the play, and either of the following two procedures is acceptable:
 - BU will take a quick step forward with his *left* foot, *moving in the direction of the 45-foot line*. After taking this initial step forward, BU will turn (pivoting on his left foot), face the play, and set for the call.
 - BU will take two quick steps forward starting with his *right* foot, *moving in the direction of the 45-foot line*. After taking two steps forward (right followed by left), BU will turn (pivoting on his left foot), face the play, and set for the call.
 - **Important Notes:**
 - The preceding two techniques are very similar; the basic difference being how much time is available and how much distance may be gained during the pick-off move. The second alternative allows BU to take one extra steps towards the 45-foot line before turning and facing the play. Always use the time available wisely and position to see the play well.
 - The pick-off from F1 takes little time and means BU has very little time to react, step and set. Two steps on this pick is about all that can be achieved realistically.
- F2 Attempts a Pick-Off to 1st Base: It is possible that F2 may try to pick off R1 at 1st base with a quick throw following a pitch:
 - BU will read F2’s movements preparing to throw the ball to 1st base after the pitch crosses the plate and is caught
 - BU will anticipate the throw by starting to *move in the direction of the 45-foot line*.
 - BU will take two or more quick cross-over steps forward starting with his left foot
 - BU will move as far as the play will allow.
 - After taking several steps forward, BU will turn (pivoting on his left foot),
 - Face the play, and set for the call just before the tag is applied.
- **Important Note:** The pick-off from F2 takes longer to develop and gives BU more time to gain ground, develop angle and position for the play. The key is to read F2 receive the pitch, step towards 1st, react immediately by moving toward the 45 foot line, gain as much ground as the play will permit while getting set before the tag is applied on R1 at 1st base.
- Pick-Offs Are Covered with Some Similarity to Steals of 2nd Base with R2 on 2nd Base:
 - As BU sees F1 begin the pick-off move towards 2nd base, he will “drop step” towards 2nd base with his left foot.
 - Keep his eye on the ball and not turning his back on it.
 - Then, as F1 releases the ball, BU would continue to move towards 2nd base.
 - The ball will turn BU into the play as the throw reaches BU (BU should more or less be “pivoting” on his left foot as the throw reaches him).
 - BU will turn and focus on the play, keeping in mind that by this time he should be in proper position and angle for the play at 2nd (ideally a few steps to the home plate side of the 2nd base cutout).
 - It is imperative that BU be *completely set and not moving* for this play.
 - A pick-off started by F2 is covered in similar fashion.

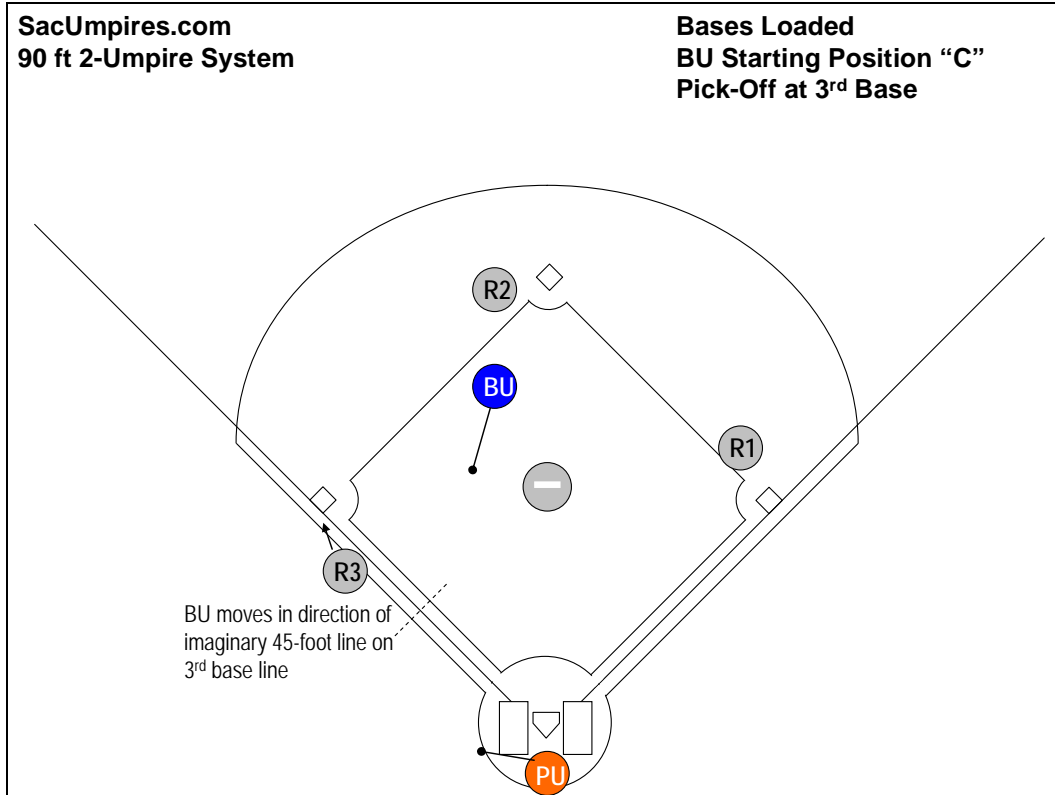


Diagram 8.2.2-a: With the bases loaded, a pick-off attempt at 3rd base

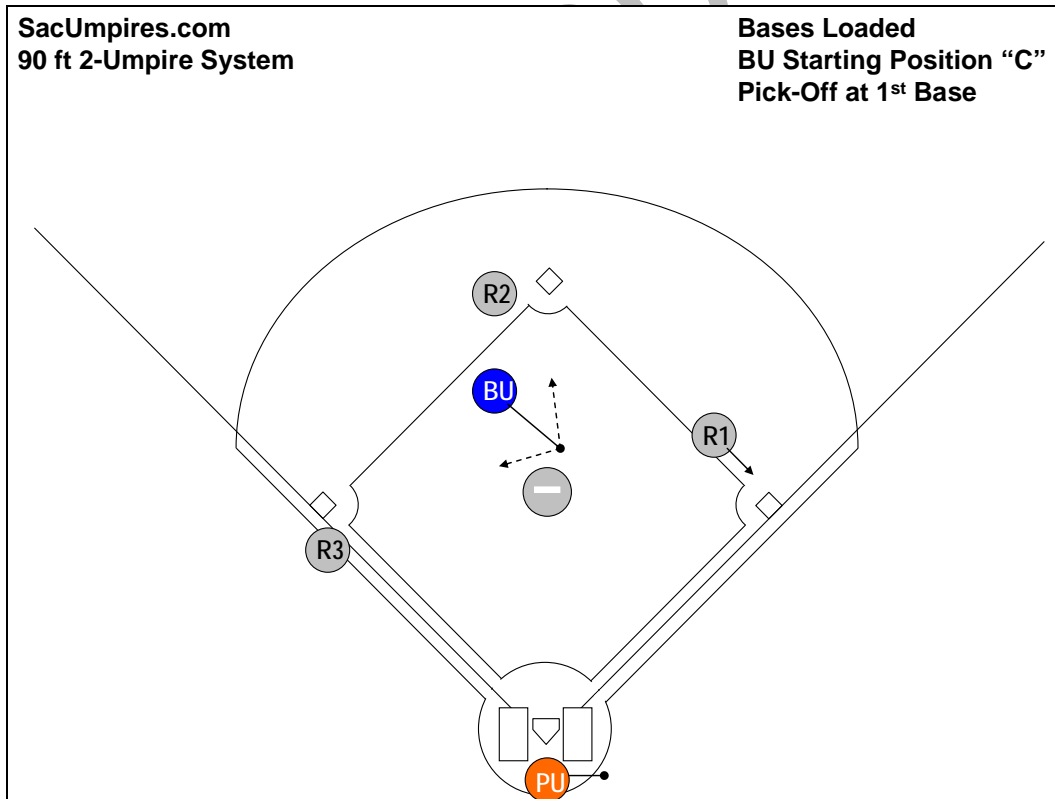
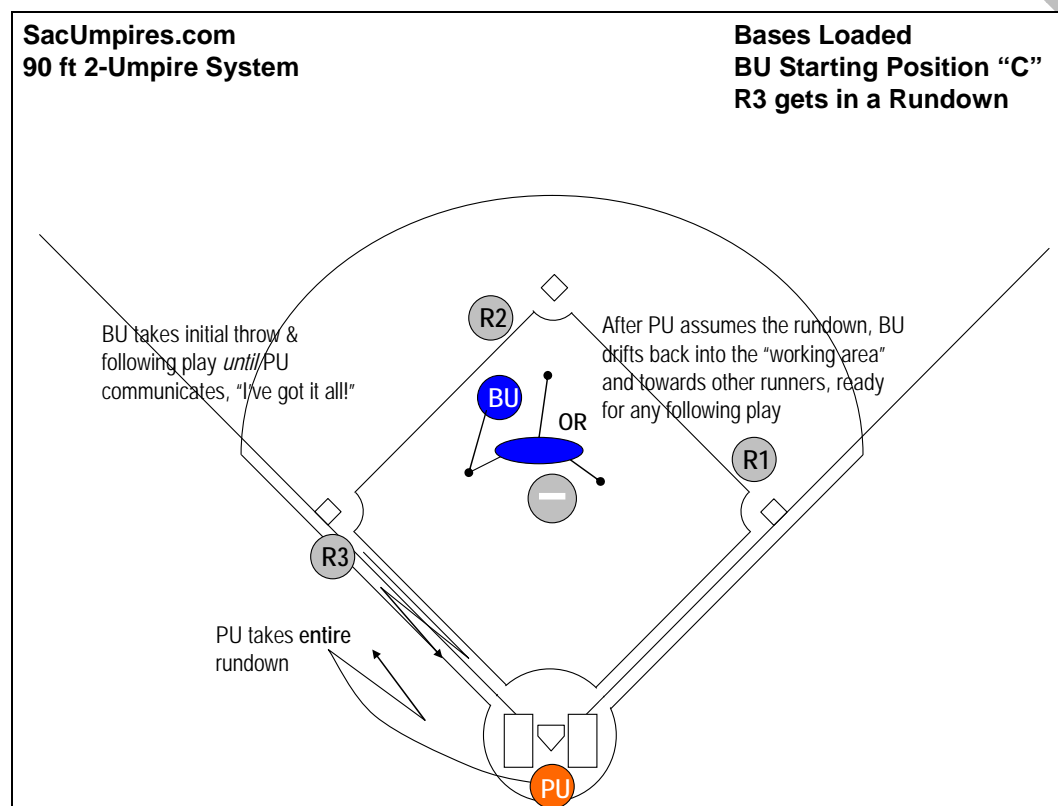


Diagram 8.2.2-b: With bases loaded, the pitcher or catcher attempts a pickoff at 1st base

8.2.3 – Rundowns with Bases Loaded:

- If the rundown develops between 3rd and home:
 - BU will cover the initial throw and subsequent throws at the 3rd base end of the rundown *only until* PU is able to get into position to assume responsibility for the *entire rundown*.
 - As soon as PU is able to get into position, he will assume responsibility for the entire rundown and communicate to his partner, "I've got it all, Bill! I've got it all!"
 - Then, BU would "drift" back in the direction of the other runners, assuming responsibility for those runners. (See Diagram 8.2.3).
- With bases loaded, if a rundown should develop between 1st and 2nd or less likely between 2nd and 3rd:
 - BU will handle these rundowns *alone*.
 - PU will remain at home, being alert for any play to develop on R3 attempting to score from 3rd base.
 - This mechanic requires BU to bounce back towards the other runners after an initial play on one of the runners.
 - BU must also be alert for situations such as an initial pick-off at 1st base which ends abruptly and is followed by an attempt on R3 originally on 3rd base.
 - BU must show excellent reactions and movements in this situation, as he must cover both ends of such a play.

Diagram 8.2.3: Pick-off at 3rd base by F2 followed by rundown between 3rd and home with bases loaded

8.3 – Steals *with Bases Loaded*

8.3.1 – R3 Steals Home with Bases Loaded

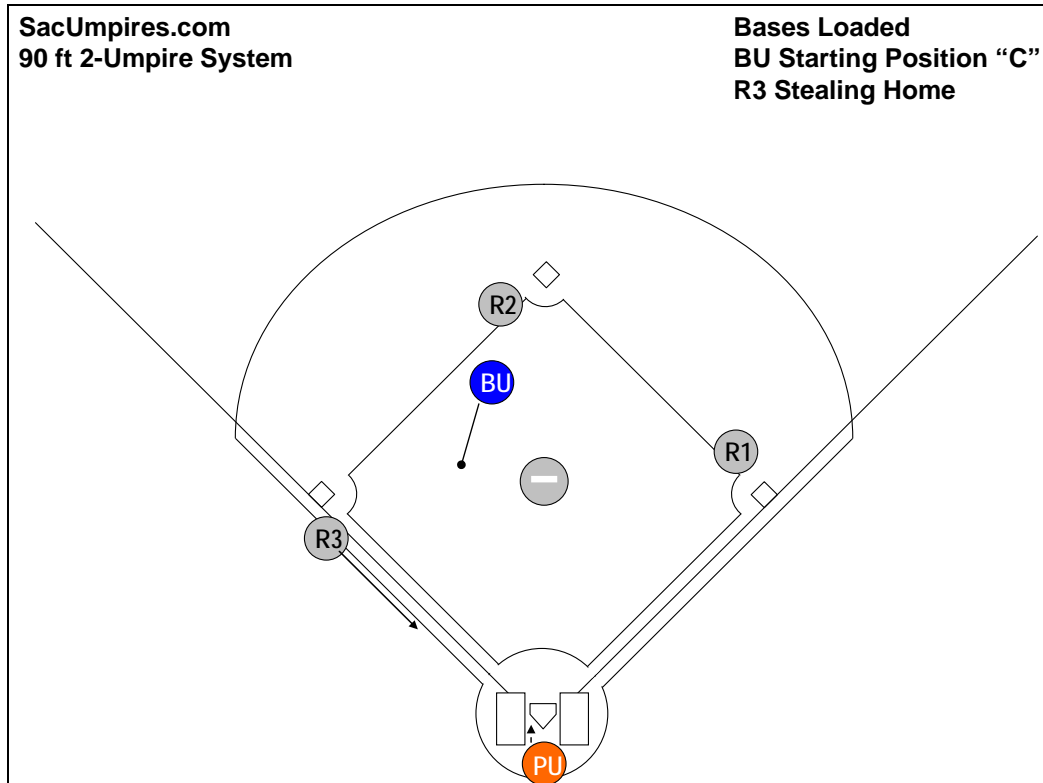


Diagram 8.3.1: R3 is stealing the plate with bases loaded.

Umpire Actions & Responsibilities:

- BU:** Read R3's break in your peripheral vision.
PU: Concentrate.
- BU:** Stay in your set position and remain alert for a batted ball.
PU: Determine whether the pitch is a ball or strike.
- BU:** If the ball clears the batter, read R2. If he advances, move cautiously toward the midpoint of the 3rd base line. There may be a subsequent play on R2 or R1, either at 1st, 2nd or 3rd bases depending if they advance or retreat.
PU: Do not attempt to remove your mask. If a right-handed batter is up, stay in your slot and take an adjustment step to your left if necessary to open your view of the play at the plate as F2 moves to apply the tag; observe the action as best you can. If there is a left-handed batter at the plate, take an adjustment step and angle so as to best open an angle for viewing the impending play. Be careful not to get blocked out on the play since the left-handed slot position straight-lines you to R3 sliding into the plate.
- PU:** First call the pitch; second declare R3 safe or out.
- PU:** If the pitch gets past F2, prepare for a subsequent tag play at the plate – R2 may attempt to score on the wild pitch.

8.4 – Ground Balls to the Infield *with Bases Loaded*

8.4.1 – PU's Mechanics on a Ground Ball to the Infield with Bases Loaded (Not Rolling up Either Base Line):

- PU will stay home.
- On a ground ball to the infield (other than those rolling down the foul lines), PU will swing out from behind home plate only a few feet into foul territory in the direction of 3rd base to observe the play.
- PU must be prepared to move quickly into position for a play at home plate on R3 from 3rd base.
- If the ground ball is up the 3rd base line, PU will take the fair/foul from behind the plate, straddling the 3rd base line extended.
- In either case, PU must be prepared for a play at the plate.
- If the ball is thrown to 1st base for a play on BR, PU will be responsible for **Primary/Secondary Responsibilities**:
 - PU will be watching for **interference** by BR while out of the 45-foot lane. Should PU see such an infraction, he should make the call. This is not to say, however, that BU may never make such a call. For example, if BU observes BR interfere with the play at 1st base while *clearly* out of the 45-foot lane, it is of course permissible for BU to make this call also.
 - PU will be ready for any **overthrows** at 1st base. If PU sees the ball being overthrown at 1st base, he will immediately and rapidly move with the overthrow and take responsibility for the ball going out of play.
 - PU is also in position to help on "**swipe tags**" on BR at 1st base. Although this is rarely used, it is permissible for BU to ask for help on a "swipe tag" on this play – if, for some reason, BU does not have a good look at the play. (Note that the "appeal" should be initiated by BU *immediately* and *before* a confrontation with a player or manager occurs.) The terminology by BU would be, "Bill, did he tag him?" or "Bill, do you have a tag?" while pointing to PU. The response by PU would be a **very emphatic**, "Yes! He's out on the tag!" or "No! He missed him!" while using a strong visual signal.

8.4.2 – PU's Mechanics on a Ground Ball Rolling up Either Base Line with Bases Loaded:

- **Primary/Secondary Responsibilities**: There are three reasons for having PU return to the 1st baseline as discussed in Section 8.4.1 above (interference, overthrows & "swipe tags").
- **PU's Mechanics on a Ground Ball Rolling up the 3rd Base Line with Bases Loaded**:
 - If the ground ball is up the *3rd base line*, PU will usually take the fair/foul from *a step or two* up the 3rd base line, being prepared to "bounce" back into position immediately for any play at the plate.
 - When the ball is rolling down the 3rd base line in such a way that PU will *not* be able to move down the 3rd base line at all, PU must take the fair/foul from *behind the plate*, straddling the 3rd base line extended (for example, a suicide squeeze play or any other play where it is apparent that R3 from 3rd will attempt to score on the ground ball).
- **PU's Mechanics on a Ground Ball Rolling up the 1st Base Line with Bases Loaded (See Diagrams 8.4.2-a thru 8.4.2-c)**:
 - If the ground ball is up the *1st base line*, PU will take the fair/foul from *behind the plate*, straddling the 1st base line extended.

8.4.3 – BU's Mechanics on a Ground Ball to the Infield with Bases Loaded (Not a Double-Play):

- BU will step up and turn with the ball, facing the fielder as he is fielding the ball.
- With less than two out the double play is in order, and if BU anticipates that a 2nd-to-1st double play will develop, he will cover the play according to the double-play mechanics referred to in **Section 8.4.4 (see Diagram 8.4.4)**.
- BU lets the ball take him to the play, and that BU "bounces" back towards the other runners after any initial play on the bases.
- On a ground ball to the infield with bases loaded, BU must recognize that there are several possibilities other than the 2nd-to-1st double play that could occur.
- These would include a 3rd-to-1st double play; a home- to-1st double play; a 3rd-to-2nd double play; a play at 1st base followed by a subsequent play at 2nd; a play at 1st base only; the ball getting past the infielder and going into the outfield; a play at 3rd - followed by a play at the plate; as well as several other possibilities.
- It is extremely important in these situations that BU does not over-commit prematurely and that he shows good reactions to the development of the play.
- **Note: Reverse-Force** – It is strongly suggested that BU develop the habit of calling the front end of any *reverse-force* double play **loudly and clearly** (even if it is a "routine" out) so that everyone is alerted of the initial force play (which in turn removes the force on preceding runners, making a tag necessary on those runners).

8.4.4 – 2nd-to-1st Double-Play Mechanic (with R2 and R1 on bases) (see Diagram 8.4.4):

- BU will step up and turn with the ball, facing the infielder as he is fielding the ball.
- With less than two out, the double play is in order, and BU must react with good anticipation as to how the play will develop.
- If BU reads that a 2nd-to-1st double play attempt will occur, he will begin towards the position BU would normally assume with R1 on 1st base only – Starting Position "B" (see **Section 2.1.1**).
- BU must keep his eye on the ball and be careful not to "drift" too far away from 2nd base so BU won't take himself completely out of the play at 2nd.
- As the ball is released towards 2nd base, BU will face the play, come to a complete stop, and be in a ready position for the call.
- When the decision is rendered at 2nd base, BU will turn and develop an angle for the play at 1st base by taking two or three steps in the direction of the 45-foot line (individual agility and speed will dictate how many steps are possible).
- *BU should be completely stopped and set** for each play.*
- **NOTE**: If the ball is hit back to F1, BU must take some care not to cross in front of the throw. If he has time, he may get to the other side before the throw; if not he must wait for the throw to go by.

**The intent of the word "set" as it appears here is that the umpire will come to a complete stop, facing the play, and be in a ready position to make the call not

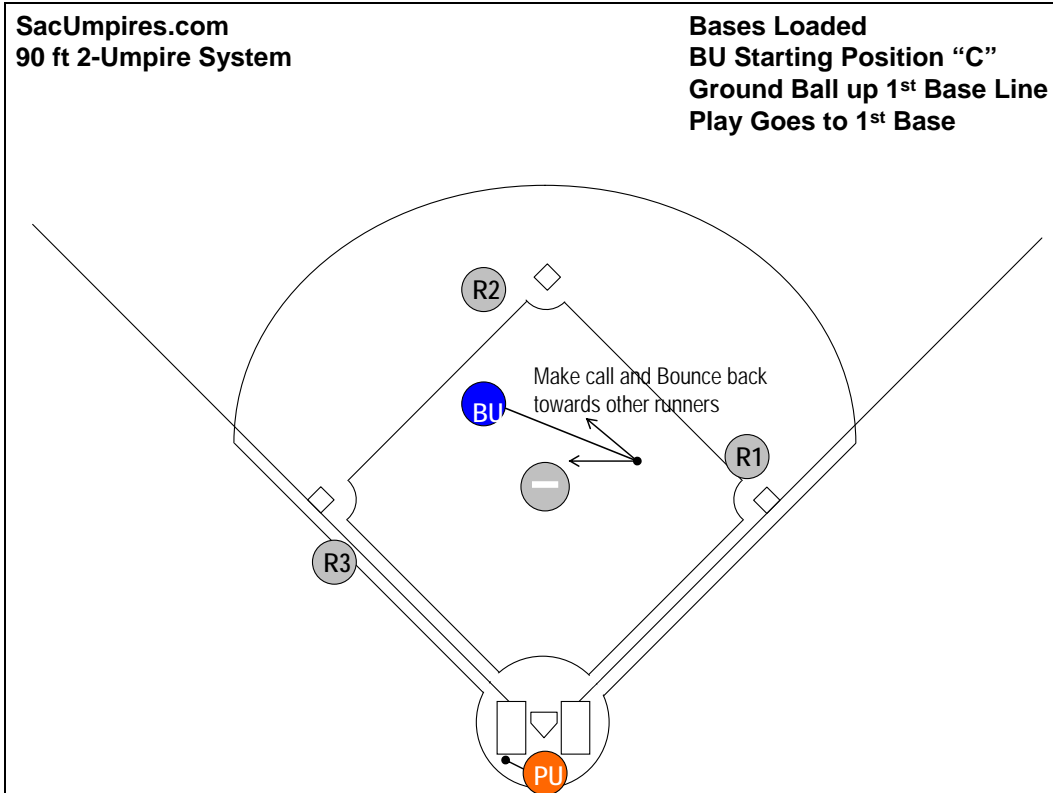


Diagram 8.4.2-a: Ground ball up the 1st base line with play going to 1st base

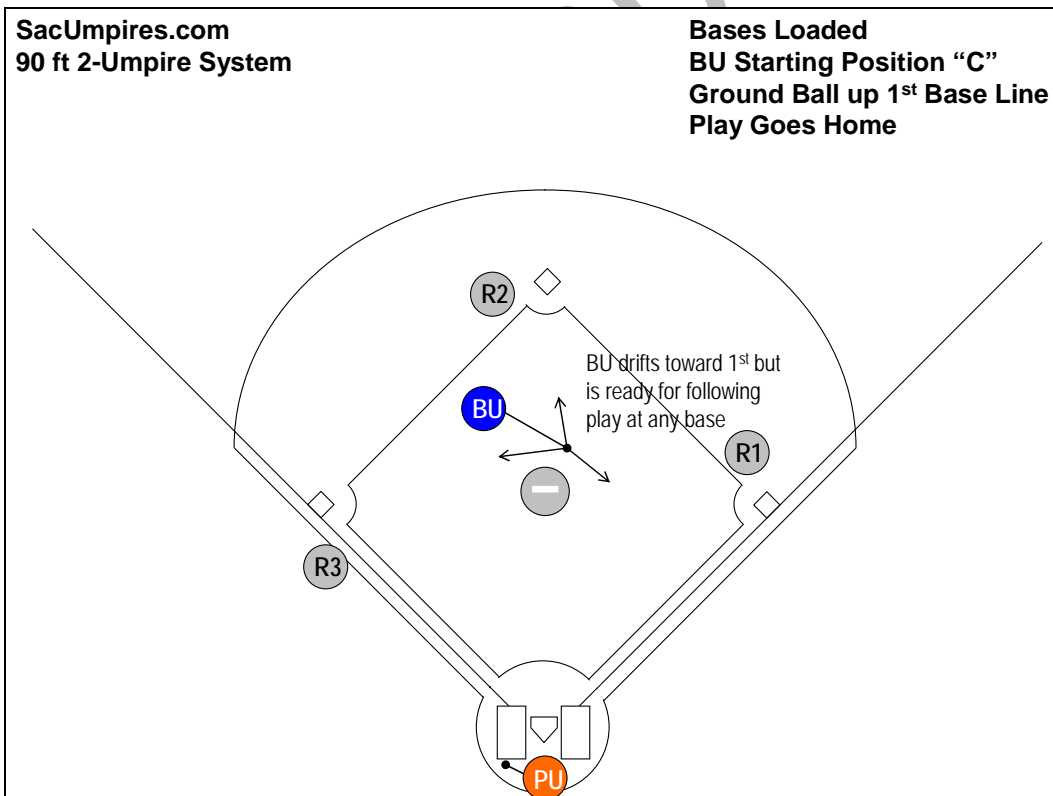


Diagram 8.4.2-b: Ground ball up the 1st base line with play going home

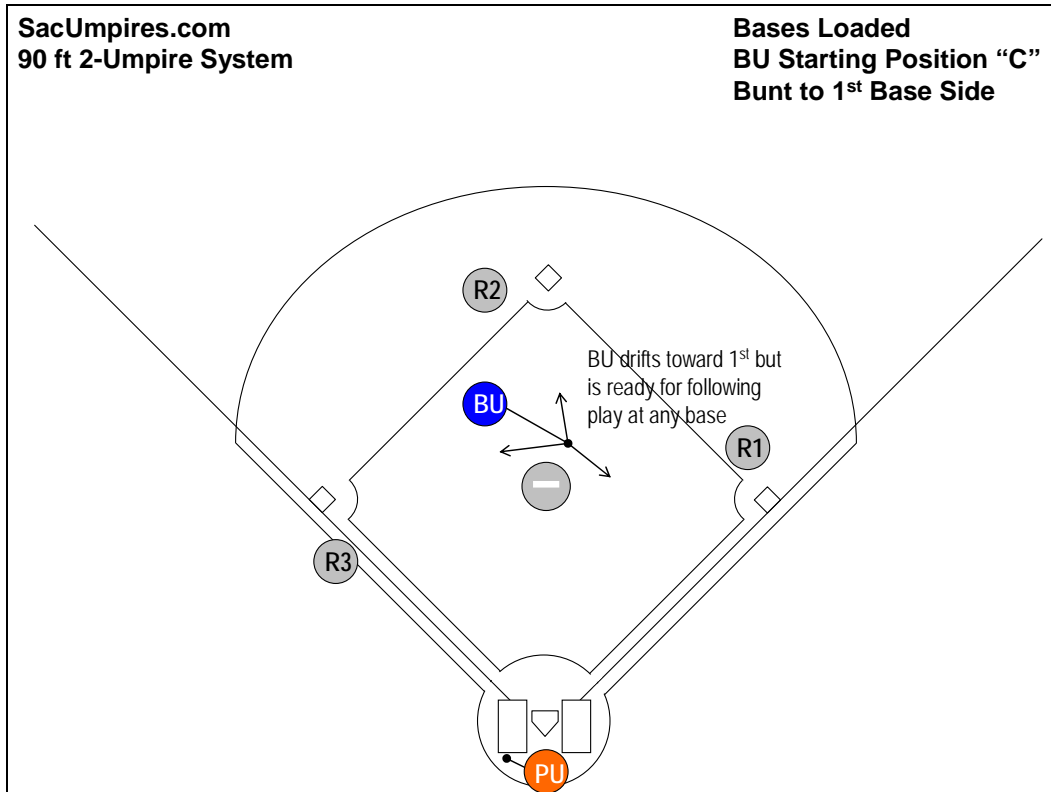


Diagram 8.4.2-c: Bunted ball to the 1st base side

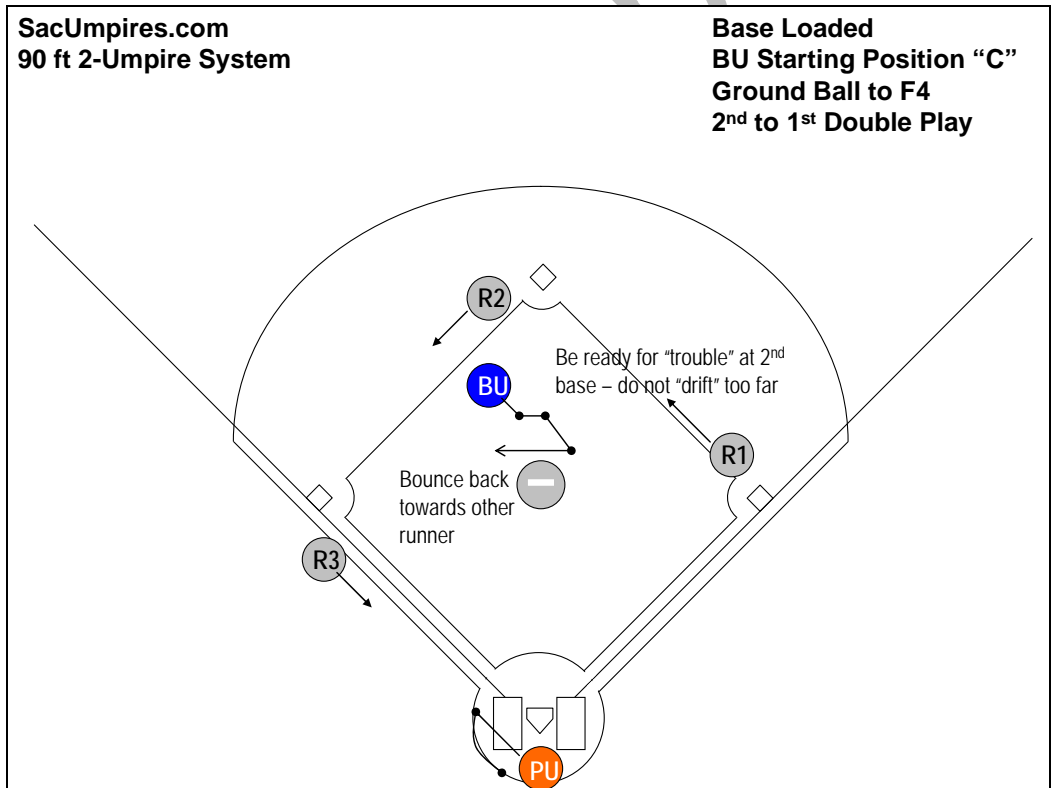


Diagram 8.4.4: 2nd-to-1st double play on ground ball to F4 with bases loaded

8.5 - Fly Balls and Line Drives to the Infield *with Bases Loaded*

8.5.1 – Responsibility for a Fly Ball and Line Drive with the Bases Loaded (See Diagram 8.5.1):

- PU has responsibility for all fly balls and line drives to F1
- PU will also take all fly balls fielded by F2.
- PU is responsible for the F3 or F5 *moving towards the foul line*
- All other fly balls and line drives to the infield are the responsibility of BU.

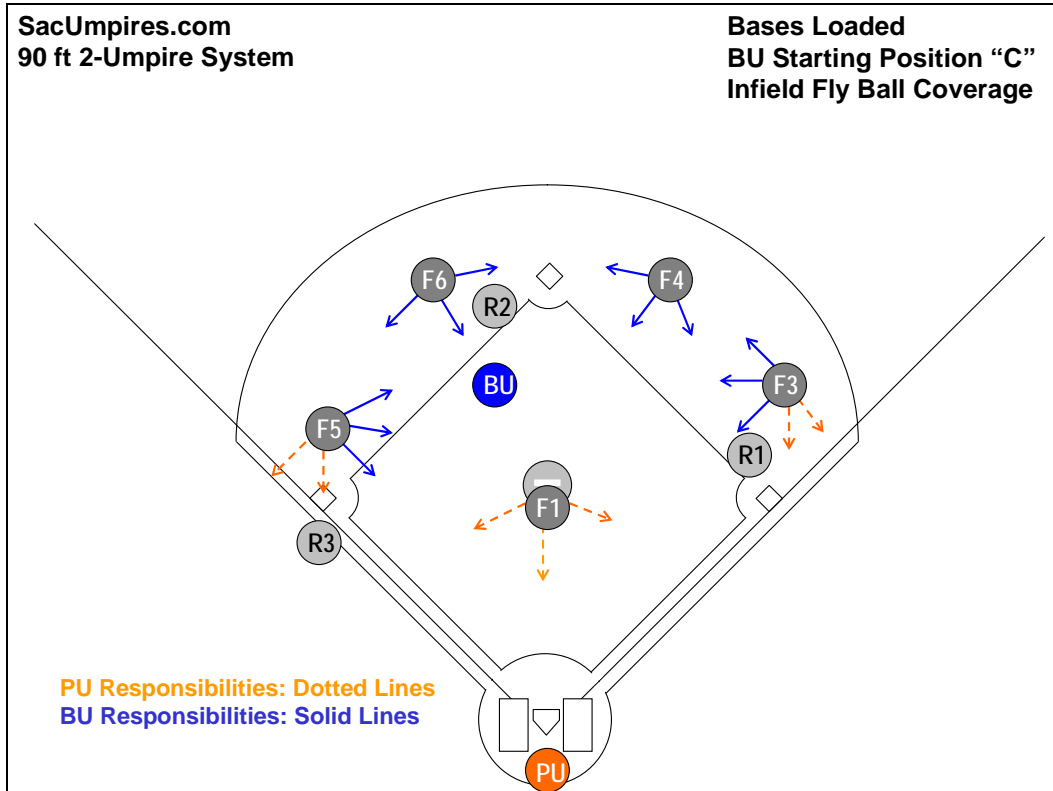


Diagram 8.5.1: Responsibilities for fly balls and line drives to the infield with bases loaded

8.5.2 – PU's Mechanics When a Fly Ball or Line Drive is hit to the Infield with the Bases Loaded:

- PU should swing out from behind home plate a few feet into foul territory in the direction of 3rd base to observe the play (unless the ball is hit near the foul lines).
- If the fly ball is fielded in the vicinity of the 1st base line, PU normally will take this play from behind home plate, straddling the 1st base line extended.
- If the fly ball is fielded in the vicinity of the 3rd base line, PU should straddle the line *a step or two up the line* to make the call unless two are out, in which case PU should take the play from behind the plate, straddling the 3rd base line extended.
- PU's positioning on line drives to the infield would be exactly the same as just mentioned for fly balls with the exception that it is permissible to move out in front of the plate for line drives back to F1.

8.5.3 – BU's Mechanics When a Fly Ball or Line Drive is hit to the Infield with the Bases Loaded:

- If the ball is caught, BU has responsibility for any play at 3rd base on R3 on 3rd.
- If the ball is dropped, BU has responsibility for all plays at 1st, 2nd and 3rd.
- BU will step up, turn with the ball and face the infielder.
- BU should glance back over his shoulder at 1st base to watch BR touch 1st base.
- It is permissible for BU to take a couple steps backwards toward the mound to open up the field of play as the fly ball is hit.
- If the infielder is moving *in* to make the play, BU may have to move several steps – including to either side of the mound – in order to give the fielder room to make the play.
- BU must guard against taking himself completely out of position in case the ball should be dropped.

8.5.4 – Remember to Vary Intensity of Voice & Signal:

- If the fly ball is a "routine" catch, the umpire need not call or signal anything.
- However, if the catch turns out to be a "difficult" play, the umpire would sell the call as needed.

8.5.5 – "Infield Fly Rule" Situations Mechanics:

- With the bases loaded and less than 2 out, the *infield fly rule* is in effect
- The umpires will alert each other to this situation with a prearranged signal before each batter whenever the infield fly is in effect. (The usual signal is to give the number of outs followed by an open hand with thumb tip across the middle of the chest. Both umpires would signal this to each other.)
- There is no restriction on which umpire should initiate the infield fly call other than PU should be the one to initiate the call if the fly ball is hit near either foul line.
- When one umpire makes the infield fly declaration, the other umpire should follow up with the verbal and visual call also ("echo" or "mirror" the call & signal).
- Proper terminology for calling an infield fly is: "Infield Fly! Batter is out!" exclaimed **loudly and clearly** while extending the right arm into the air with a fist and index finger pointing straight up.
- If the fly ball is near the foul line, PU will initiate the call by exclaiming loudly and clearly, "Infield fly if fair!" (using the same visual signal). BU would then follow with the same call.
- Positioning when calling the infield fly would be the same as on any fly ball with the exception that it is permissible for PU to move out a few feet in front of the plate when actually making the call (unless the ball is hit near the foul lines, in which case PU would be straddling the line).
- The proper moment for the umpire to declare an infield fly is when the umpire sees that the infielder is positioned under the ball he has virtually stopped moving). In most cases this will occur when the infielder is facing the infield and the flight of the ball has reached its apex. These conditions will indicate that "ordinary effort" has occurred.

8.6 – Fly Balls and Line Drives to the Outfield *with Bases Loaded*

8.6.1 – Responsibilities for Fly Balls and Line Drives to the Outfield with Bases Loaded – (See Diagram 8.6.1):

- Fly balls (or line drives) from F7 *straight in* all the way to F9 *straight in* (sometimes referred to as the “80%” or the “V”) belong to the **base umpire (BU)**.
- Fly balls (or line drives) where F7 moves any distance towards the *left field line* - his *right* - (sometimes referred to as the “10%”) belong to the **plate umpire (PU)**.
- Fly balls (or line drives) where F9 moves any distance towards the *right field line* - his *left* - (sometimes referred to as the “10%”) belong to the **plate umpire (PU)**.

Important Note: It is important that the two umpires **communicate** after the ball is hit on fly balls and line drives to the outfield, particularly when balls are hit to F7 or F9. The reason here is so that each umpire is certain who has responsibility for any given fly ball or line drive to the outfield.

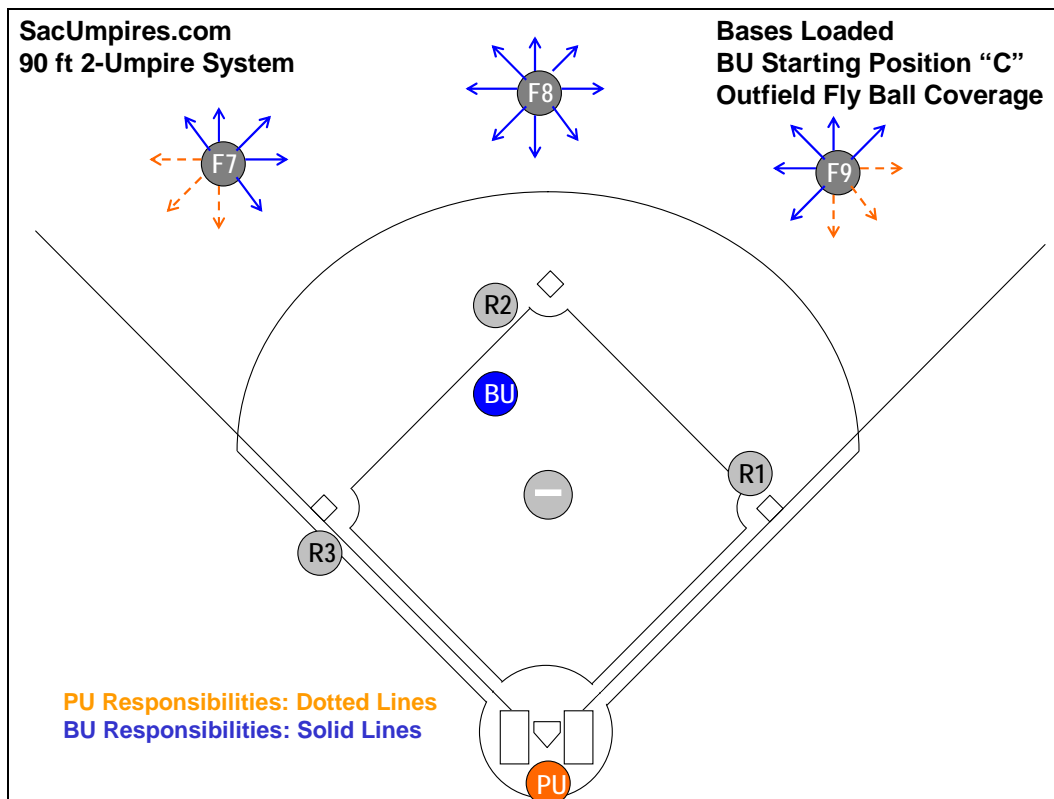


Diagram 8.6.1: Outfield fly ball and line drive responsibilities with the bases loaded – This coverage is sometimes referred to as “80% - 20%” or “the cone” fly ball coverage.

8.6.2 – Fly Ball or Line Drive to the Outfield with Bases Loaded:

- Both umpires will need to look at the outfielders in order to determine who has responsibility for the ball as described in Section 8.6.1.
- If the fly ball or line drive belongs to the PU (i.e., if the fly ball or line drive causes either F7 or F9 to move any distance towards the line), PU must **communicate** to his partner that PU has responsibility for the ball by saying, "I'm on the line, Bill", "I'm on the line".
- If the ball is caught, PU is responsible for R3 tagging up at 3rd base and BU is responsible for R2 & R1 tagging at 2nd & 1st bases and plays back into 3rd, 2nd or 1st bases.
- If the ball is not caught, BU is responsible for all plays at 1st, 2nd and 3rd as well as all touches at 1st and 2nd, and the touch at 3rd by BR. PU is responsible for all plays at the plate as well as for all touches of 3rd (except for BR touching 3rd) and all touches of home.
- BU will step up, turn with the ball, and back up *only two or three steps* towards the mound to open up the playing field. [NOTE: We call this area behind the mound the **"working area"** for BU. From this "working area" he is in good position for observing his responsibilities and for moving into proper position as plays develop.]
- When BU has multiple runner responsibilities, if no play develops after the base hit, BU should maintain his basic position in this "working area" and *not* be drawn unnecessarily towards a base without a potential play developing there.
- BU should use the **"pause-read-react"** technique to allow the play to develop and reveal enough information to determine whether the play is a "trouble" play or not. After the ball has been determined to belong to BU (the ball is batted to BU's outfield coverage area), BU will:
 - **"Pause"** (*hesitate momentarily to gather information about the developing play*)
 - **"Read"** (*focus his attention on the reactions of the outfielder(s) by taking his eye off the ball, zeroing in on the of the outfielders movements, "keying" off the outfielders reactions, and watching for—and determining if the outfielder's reactions reflect "trouble" or reflect "trouble" cues.*)
 - **"React"** (*pivot into the infield on "routine" outfielder reactions or go out on "trouble" reactions to the ball*). If there is any doubt about whether a play is "trouble" or not, BU should go out.
- **"Difficult" plays** are defined as *home runs; balls hit off the outfield wall; diving catches; catches made by the outfield below his waist on a dead run; catches made with fielders converging on the ball; catches by the outfielder with his back towards the infield; catches made by the outfielder at the wall or on the warning track; etc.*

8.6.3 – "Routine" Outfield Fly Ball or Line Drive to BU's Responsibility Area with the Bases Loaded (See Diagram 8.6.3-a & 8.6.3-b):

- PU will swing out from the plate *several steps* into foul territory to his left (usually in the general direction of the 3rd base dugout) in order to line up the tag at 3rd base.
- After the tag-up, PU will immediately break quickly ("bust") back home, setting up for any possible play at the plate on R3.
- The actual distance and direction PU swings out to his left will *vary* depending on the direction the fly ball is hit, and in most cases it will not be possible for PU to have an exact line on the tag-up; however, this swinging out to the left will help decrease the angle on lining up the tag at 3rd base.
- BU should "drift" back **two or three steps towards the mound** (into the "working area") in order to open up the playing field to observe the catch, watch the runner(s) tag up, and watch BR touch 1st. By backing up these few steps towards the mound, it will be easier for BU to cover these responsibilities and also allows BU to move into position easily for any following plays at 1st, 2nd, or 3rd.
- BU is responsible for the catch, the tag-ups at 1st and 2nd, and BR touching 1st
- If the catch is "routine", BU need not call or signal anything.

8.6.4 – "Difficult" Outfield Fly Ball or Line Drive to BU's Responsibility Area with the Bases Loaded:

- PU will swing out from the plate *several steps* into foul territory to his left (usually in the general direction of the 3rd base dugout) in order to line up the tag at 3rd base.
- After the tag-up, PU will immediately break quickly ("bust") back home, setting up for any possible play at the plate on R3.
- The actual distance and direction PU swings out to his left will *vary* depending on the direction the fly ball is hit, and in most cases it will not be possible for PU to have an exact line on the tag-up; however, this swinging out to the left will help decrease the angle on lining up the tag at 3rd base.
- BU will use the **step-up, turn & face the ball** and **pause-read-react** techniques (described in section 8.6.2) in deciding whether or not he should move to the edge of the grass (See Diagram 8.6.4).
- If the fly ball or line drive results in a "difficult" play, BU should **move to the edge of the infield grass in the direction the ball is hit** to cover the play, but never leave the infield grass.
- BU will roughly line up the outfielder catching the ball and R2 tagging at 2nd base.
- BU will glance over his shoulder at 1st base and watch R1 retouch 1st base if the ball is caught.
- If the ball is not caught, BU is responsible for the touch at 2nd base by R1 and 1st base by BR (this would be accomplished by BU glancing over his shoulder in that direction of 1st base after watching R1 touch 2nd.)
- BU must **immediately "bounce"** back from the edge of the infield grass to pick up responsibility of the base runners.

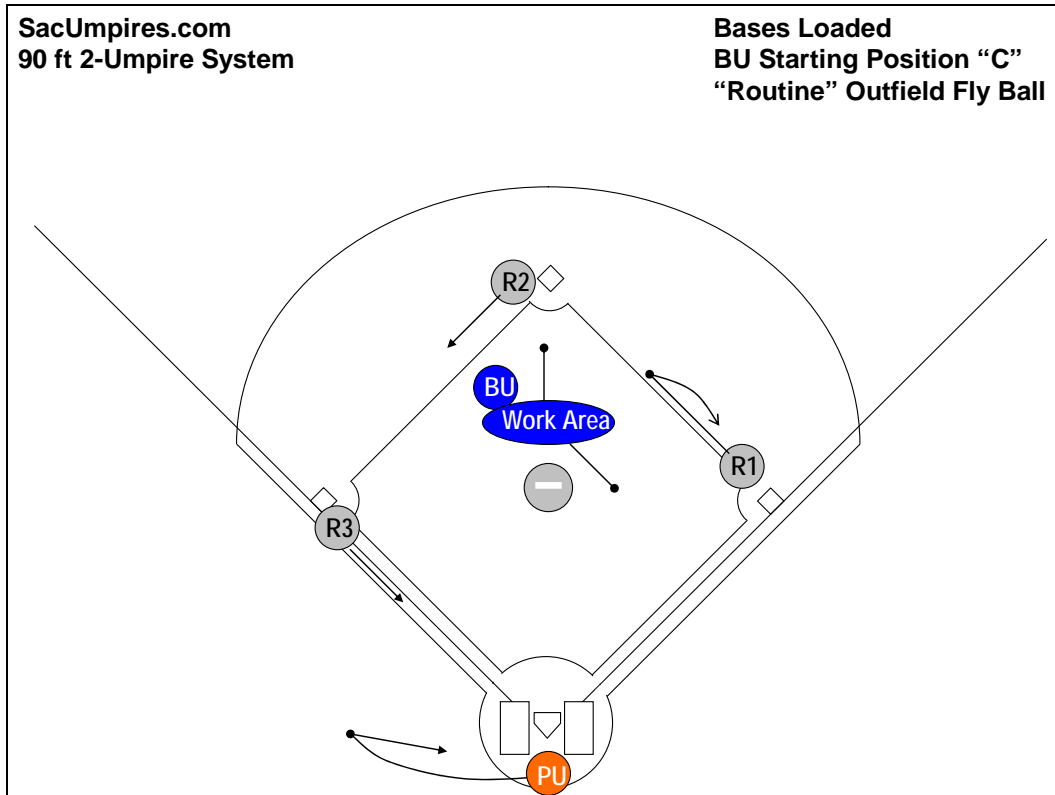


Diagram 8.6.3-a: "Routine" fly ball to the middle of the outfield (BU's ball) with R3 tagging and advancing home

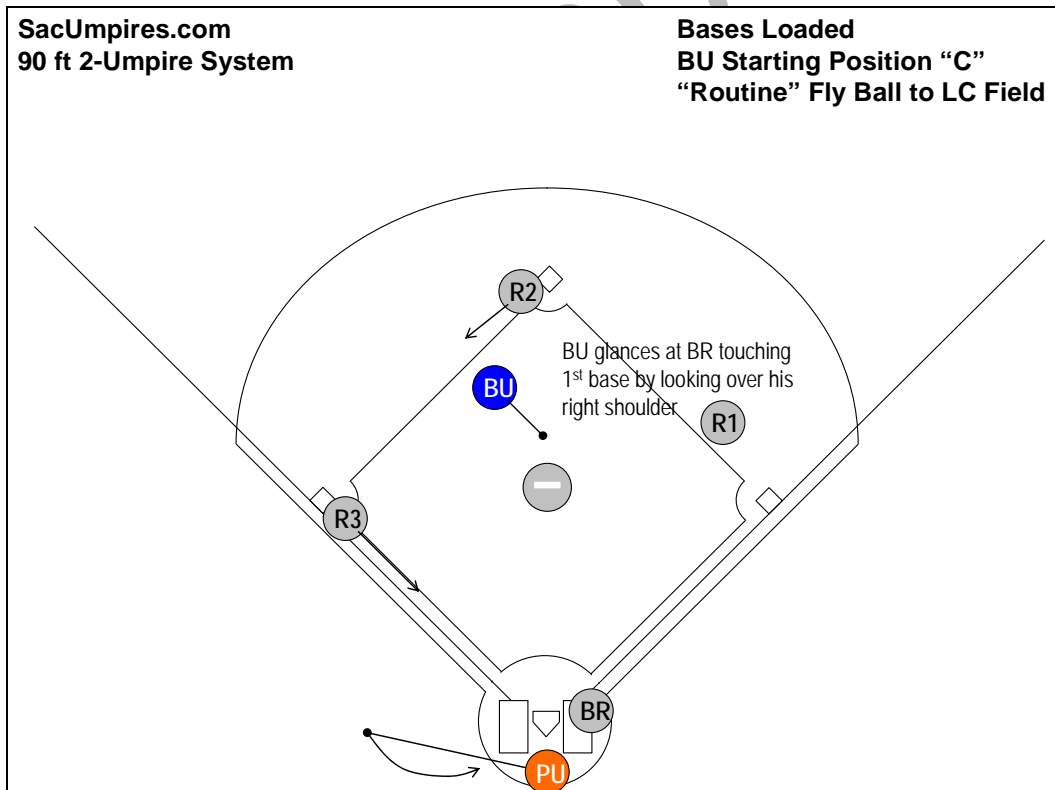


Diagram 8.6.3-b: PU lining up tag at 3rd base on "routine" fly ball to left-center; R3 advancing to home plate after catch

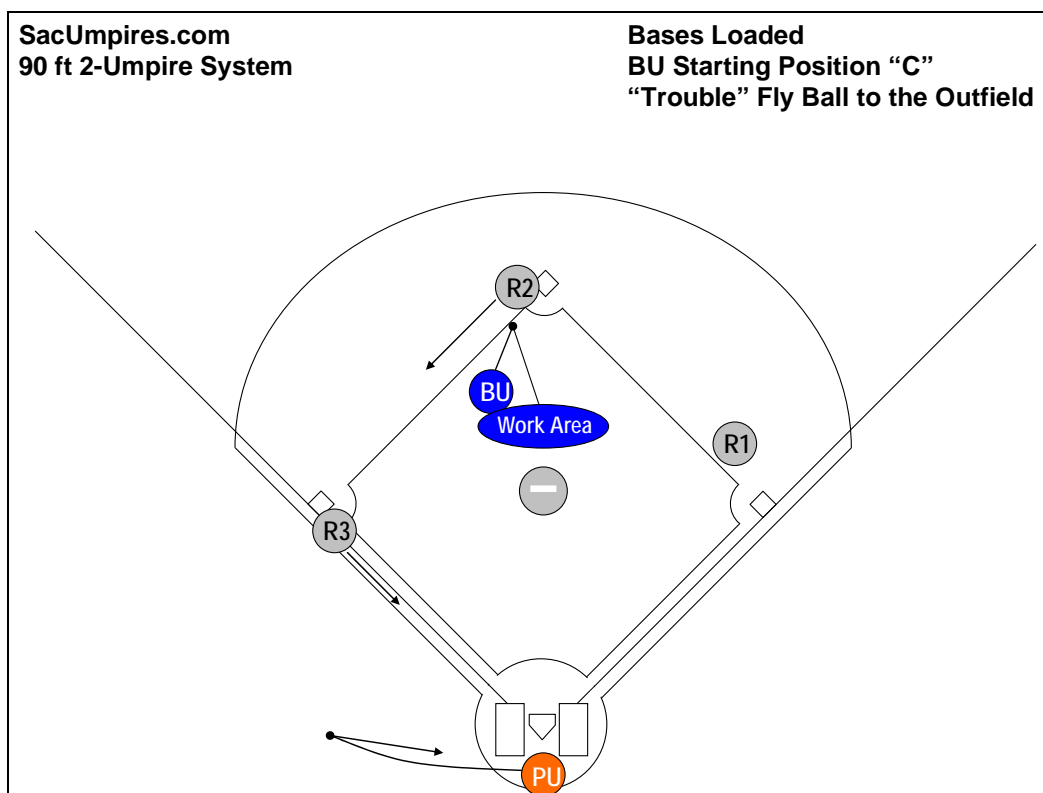


Diagram 8.6.4: "Trouble" fly ball to the middle of the outfield (BU's ball) with R3 tagging and advancing home

8.6.5 – "Difficult" Outfield Fly Ball or Line Drive Down the Right Field Line in PU's Area with the Bases Loaded (If the Fly Ball or Line Drive Causes F9 to Move any Distance Towards the RF Line) (See Diagram 8.6.5-a & 8.6.5-b):

- BU will take responsibility for all plays at 1st, 2nd, and 3rd on all runners.
- BU should "drift" back **two or three steps towards the mound** (into the "working area") in order to open up the playing field to observe the catch, watch the runner(s) tag up, and watch BR touch 1st. By backing up these few steps towards the mound, it will be easier for BU to cover these responsibilities and also allows BU to move into position easily for any following plays at 1st, 2nd, or 3rd.
- PU will communicate loudly to his partner, "I'm on the line, Bill!" to indicate that he is taking the ball.
- PU must be in a good position for any possible fair/foul or catch/no catch down the right field line.
- Remember, the first priority in these situations is **the ball**.
- It will generally not be possible for PU to move very far up the 1st base line to rule on the ball because of the potential play at the plate.
- PU will only move up the 1st base line *only so far that he is CERTAIN that he will have ample time to get back to home plate* for any possible play there on R3 from 3rd base.
- PU's position will *vary* based on the location of the ball, the location of the fielders, and whether or not R3 on 3rd base is tagging.
- The key to remember is that PU will go only so far that he knows he will have ample time to get back home for any potential play there.
- PU will come to a stop to see the play and make the call.
- Since PU has responsibility for the tag-up at 3rd base, PU must take a quick glance over his left shoulder at 3rd base after the ball is touched to judge the tag-up – This is a difficult mechanic for PU.
- After PU has ruled on the play (and watched for the tag-up), PU will normally "bounce" back home **IMMEDIATELY** and be ready for any play at the plate.
- PU still has responsibility for the ball going out of play, so there may be occasions when he may "linger" on the line, watching the ball. But, PU must never go so far down the line or "linger" so long that he does not have ample time to return to the plate and set up in proper position for any potential play at the plate. Normally PU will "bust" back home.

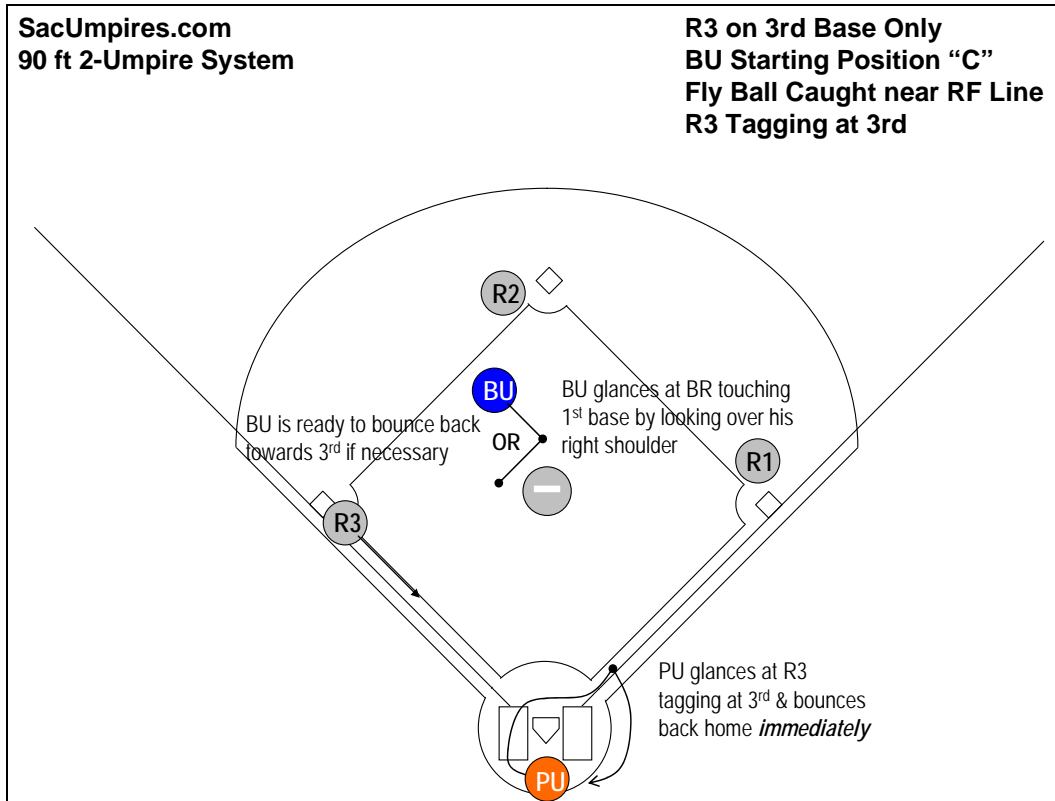


Diagram 8.6.5-a: PU taking fly ball caught near right field line, glancing at R3 tagging at 3rd base, and going home.

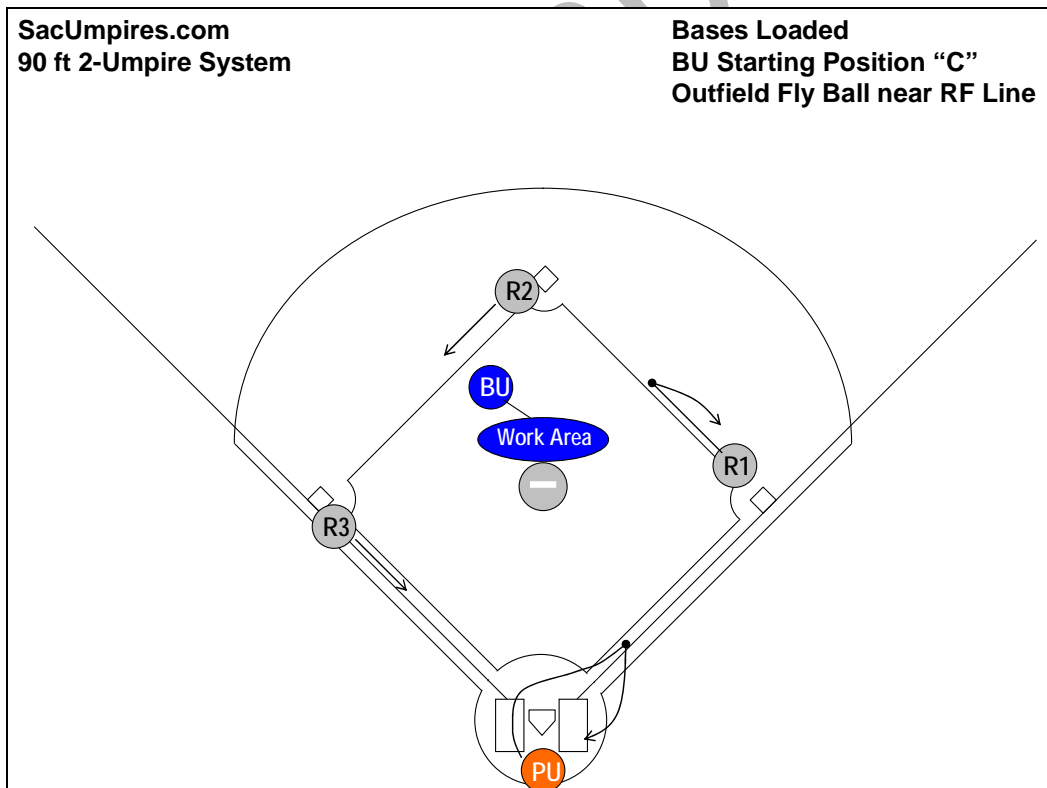


Diagram 8.6.5-b: "Routine" fly ball to outfield moves F9 toward the foul line (PU's ball) with R3 tagging and advancing home

8.6.6 – “Difficult” Outfield Fly Ball or Line Drive Down the Left Field Line in PU’s Area with the Bases Loaded (If the Fly Ball or Line Dive Causes F7 to Move any Distance Towards the LF Line) (See Diagram 8.6.6):

- BU will take responsibility for all plays at 1st, 2nd, and 3rd on all runners.
- BU should “drift” back **two or three steps towards the mound** (into the “working area”) in order to open up the playing field to observe the catch, watch the runner(s) tag up, and watch BR touch 1st. By backing up these few steps towards the mound, it will be easier for BU to cover these responsibilities and also allows BU to move into position easily for any following plays at 1st, 2nd, or 3rd.
- PU will take the ball and communicate loudly to his partner, “I’ve got the ball, Bill!” or “That’s my ball, Bill!”
- PU will move up the 3rd base line remembering that he will go up the line *only so far that he is certain he will have ample time to get back to home plate and set up in proper position for any play on R3 coming from 3rd base for any possible play there.*
- PU’s position will vary, depending on the location of the ball, the speed of the runner, whether or not the runner is tagging, the number of outs, etc.
- PU also has responsibility for the tag-up at 3rd base. PU will glance at R3 as the ball is touched – This is a difficult mechanic.
- PU must remember that the first priority is **the ball**.
- PU will come to a stop to see the play and make the call on the fly ball or line drive.
- PU will watch the tag up and he will then immediately “bust” back home.
- As PU heads back home, he will communicate to his partner, “Going home, Bill! Going home!” (This will alert BU that BU has responsibility for all plays at 1st, 2nd, and 3rd). PU must never go so far down the line that he does not have ample time to return to the plate and set up in proper position for any play at the plate.
- PU will still have responsibility for the ball going out of play in this situation, and so he will need to keep his eye on the ball.

8.6.7 – The First Priority – Watching the Ball:

- IT IS VERY IMPORTANT TO NOTE AGAIN THAT IN FLY BALL COVERAGE, THE FIRST PRIORITY IS **THE BALL**.
- There could be an occasion when BU may miss BR touching 1st base because he had to keep his eye on the ball.
- There may also be a time when BU does not have the best look at the tag-up at 2nd or 1st because he had to move to the edge of the grass for a “difficult” catch in the outfield.
- This is simply a drawback of the two-umpire system.

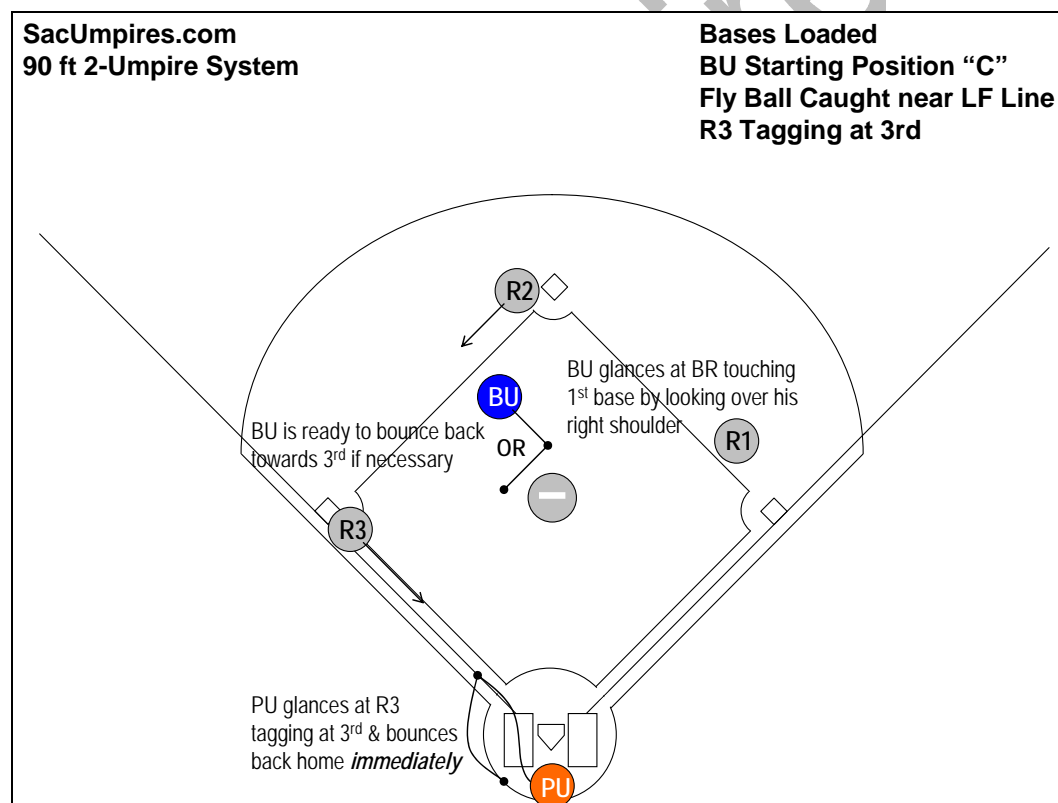


Diagram 8.6.6: PU taking fly ball near left field line, glancing at R3 tagging-up, and going home

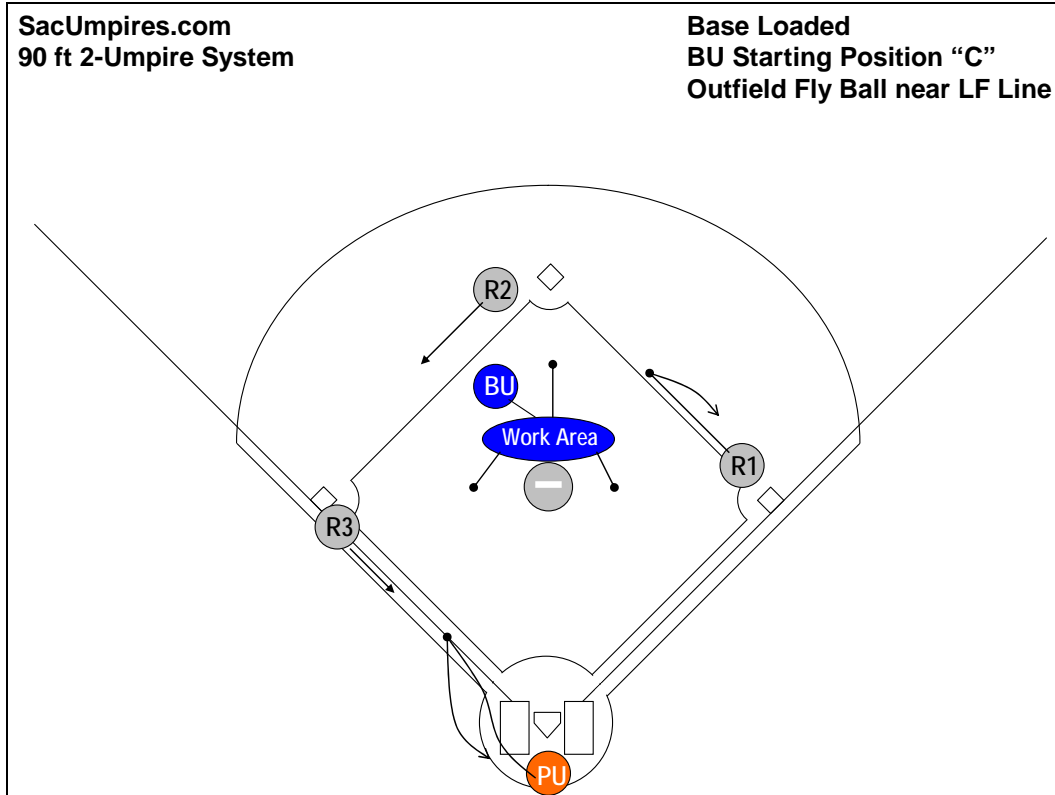


Diagram 8.6.7: Outfield fly ball moving F7 toward the line (PU's ball) with R3 tagging and advancing home

SacUmpires.com

8.7 – Base Hits to the Outfield *with Bases Loaded*

8.7.1 – Responsibilities on “Obvious” (“Clean”) Base Hits to the Outfield with Bases Loaded, (i.e., No Possible Fair/Foul or Catch/No Catch on the Play):

- PU is responsible for all touches of home plate and all touches of 3rd except for BR.
- PU will watch R2 from 2nd (and R1 from 1st if necessary) touch 3rd, watch all runners touch home plate, and to observe the play.
- BU will have responsibility for all plays at 1st, 2nd, and 3rd and all touches of 1st and 2nd and for the touch of 3rd by BR.

8.7.2 – Mechanics on “Obvious” (“Clean”) Base hit to the Outfield with Bases Loaded, (i.e., No Possible Fair/Foul or Catch/No Catch on the Play) (See Diagram 8.7.2-a & 8.7.2-b):

- PU will *stay home*.
- As the ball is hit to outfield, it is a good idea for PU to communicate to his partner, “Staying home, Bill!” as a reminder that BU has all plays on the bases and that PU will remain at home.
- PU will swing out behind home plate a few feet into foul territory in the direction of 3rd base to watch R2 from 2nd (and R1 from 1st if necessary) touch 3rd, watch all runners touch home plate, and to observe the play.
- BU should “drift” back **two or three steps towards the mound** (into the “working area”) in order to open up the playing field to observe the catch, watch the runner(s) tag up, and watch BR touch 1st. By backing up these few steps towards the mound, it will be easier for BU to cover these responsibilities and also allows BU to move into position easily for any following plays at 1st, 2nd, or 3rd.
- BU must be ready to move into position for any play on the bases.
- BU will *let the ball take him to the play* – keeping in mind the concepts of proper distance and angle to the play as well as being set to see the play and make the call (as described in Section 8.7.3).

8.7.3 – Staying within the “Working Area”:

As the ball is being thrown to the infield with **multiple runners** on base, BU should let the ball take him to the play. Only when BU anticipates the potential for a play should he move out of the “working area” and “drift” (or commit) towards a base into a position for his developing play. If no play develops (or is anticipated) on the bases or runners simply advance and no play develops on them, BU would *maintain* his position within the “working area.” *This is an important concept and mechanic and applies to all situations when more than one runner is on base -not just with bases loaded.*

IMPORTANT NOTE ** The concept of “shading” or “sliding” closer to the umpire’s **sole runner** holds in **all** situations. That is, whenever a play develops so that BU umpire is with **only one runner**, the umpire should “slide”, (“shade”) *closer to that runner* since that is his only responsibility. **THIS IS AN IMPORTANT CONCEPT AND MECHANIC.**

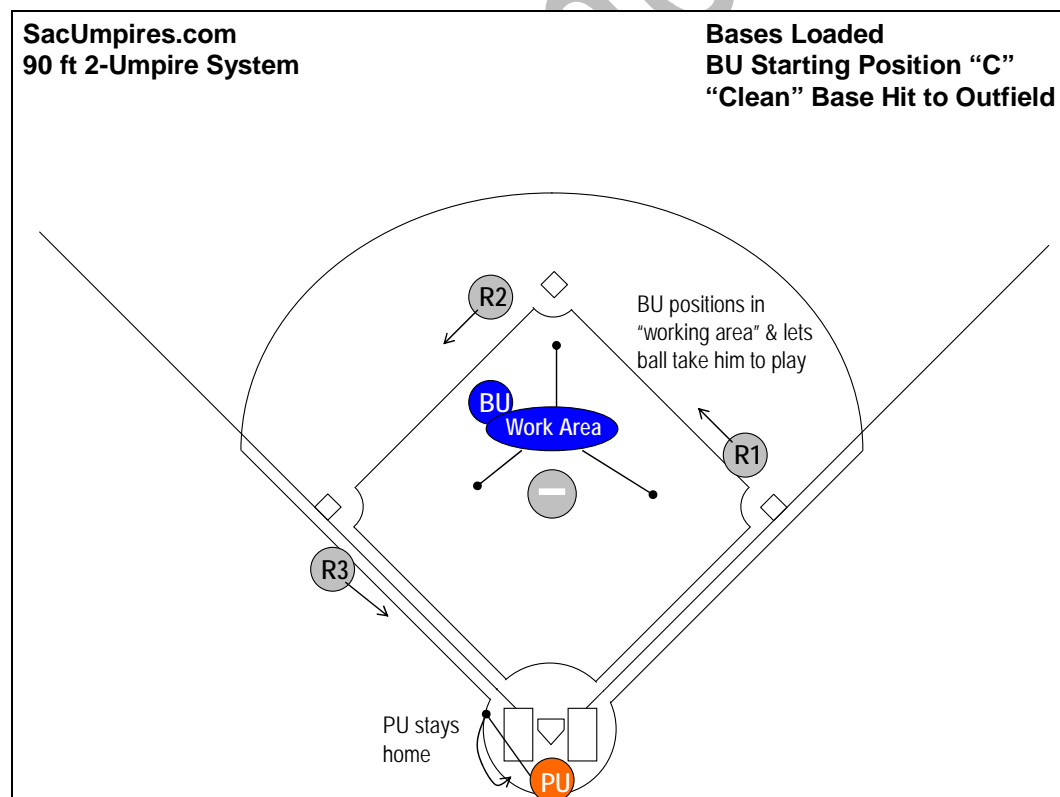


Diagram 8.7.2-a: “Clean” base hit to the outfield with bases loaded

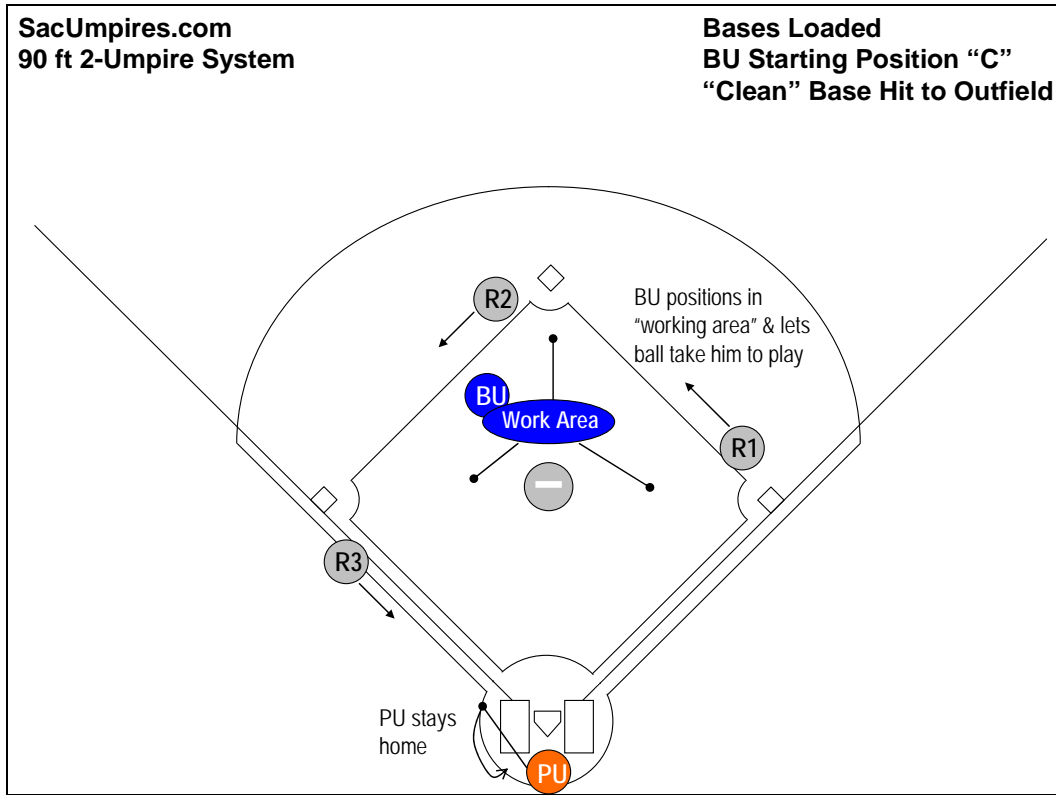


Diagram 8.7.2-b: Clean hit to the outfield with bases loaded

SacUmpires.com

8.8 – “Time” Plays *with Bases Loaded*

8.8.1 – Possible “Time” Play with Two Out and Bases Loaded:

- The two umpires will alert each other to this situation with a prearranged inconspicuous signal before each batter with bases loaded and two out. (A commonly used signal is to indicate two out and then to point to plate. Both umpires would signal this.)

8.8.2 – “Time” Play and 2 Out with Bases Loaded:

- On virtually any ball hit to the outfield PU will stay home (an exception would be if PU must go up the 1st or 3rd base line to rule on a play in the outfield – and even then he would *immediately* break quickly (“bust”) home for the “time” play after ruling on the play).
- PU should communicate his location to BU on any obvious hit to the outfield by shouting, “Staying home, Bill!” or “I’m home, Bill!”
- This reminds BU that he has responsibility for all plays at 1st, 2nd and 3rd.
- It also reminds BU of the potential for the “time” play to occur and the necessity for him to stay home and in proper position for that reason (see Diagram 8.8.1).
- PU will position approximately 6 to 8 feet behind home plate in a *straight line* between R2 touching home and the 3rd out occurring on the bases.
- PU will watch carefully to judge whether R2 crosses the plate before or after the third out is made on BR on the bases.

8.8.3 – PU will communicate this information to the official scorer by turning towards the press box and using the following mechanics:

- If the run scores:** “That run scores!” “That run scores!” (while facing the plate and pointing twice at home plate emphatically with his right arm); and then turning around and pointing up to the press box while exclaiming, “Score that run!” (Alternative terminologies include: “The run scores! The run scores! Score the run!” or “Score that run! Score that run! That run scores!”) (Note that if more than one run scored on the play, PU would additionally indicate both visually and verbally to the official scorer the total number of runs that scored on the play *after* displaying the time play mechanic.)
- If the run does not score:** “No run scores!” “No run scores!” (or “No run! No run!”) while the press box and waving his arms in a cross-wise fashion in front of his upper body above head level.

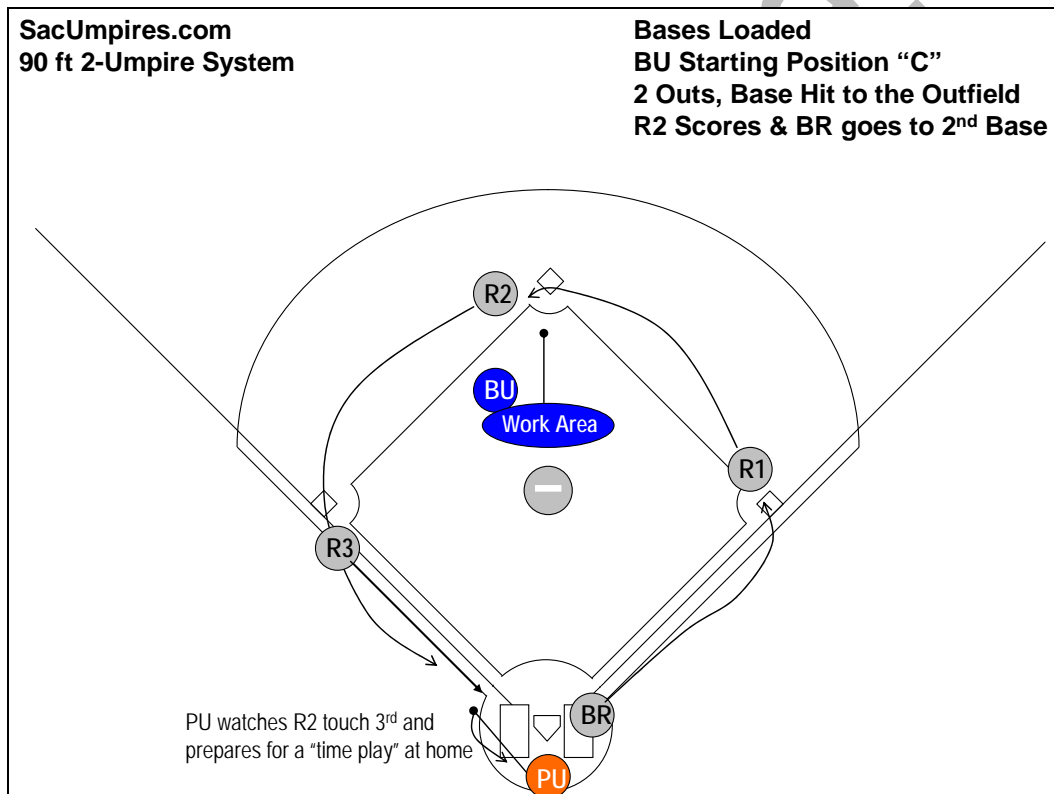


Diagram 8.8.1: PU setting up for “time” play – R2 scoring with BR being thrown out at 2nd base with two out