

Section 7.0 – R3 on 3rd & R2 on 2nd Bases

7.1 – General Positioning – Starting Position “C” with R3 on 3rd & R2 on 2nd Bases

7.1.1 – BU’s Starting Position with R3 on 1st & R2 on 2nd Bases: (see Diagram 7.1.1):

- BU will position on the 3rd base side of the infield.
- BU will position himself midway between the edge of the grass of the pitcher’s mound and the 2nd base cutout.
- BU should position himself so that if an “imaginary” line were drawn from home plate through the left edge of the pitcher’s mound towards 2nd base, BU would be straddling that line.
- BU’s body should be squared to the edge of home plate.
- This position is often referred to as **Starting Position “C”**

Important Notes:

- The positioning just described refers to fields where the grass lines are as recommended the Official Rules and as shown in **Diagram 7.1.1**. BU will have to adjust accordingly on fields which vary from this standard.
- This is the *same* positioning that will be used with R3 on 3rd base only, R2 on 2nd only, 1st and 2nd or bases loaded.
- This starting positioning “C” with runners on 2nd and 3rd base only is very important, and umpires should make sure that they are ***not too deep*** towards 2nd base when they assume this position.
- If BU is positioned midway between the mound and 2nd base as described in the previous paragraph, he will be in a good starting position for pick-offs at 2nd or 3rd bases (see **Section 7.2**) as well as other plays to the infield.

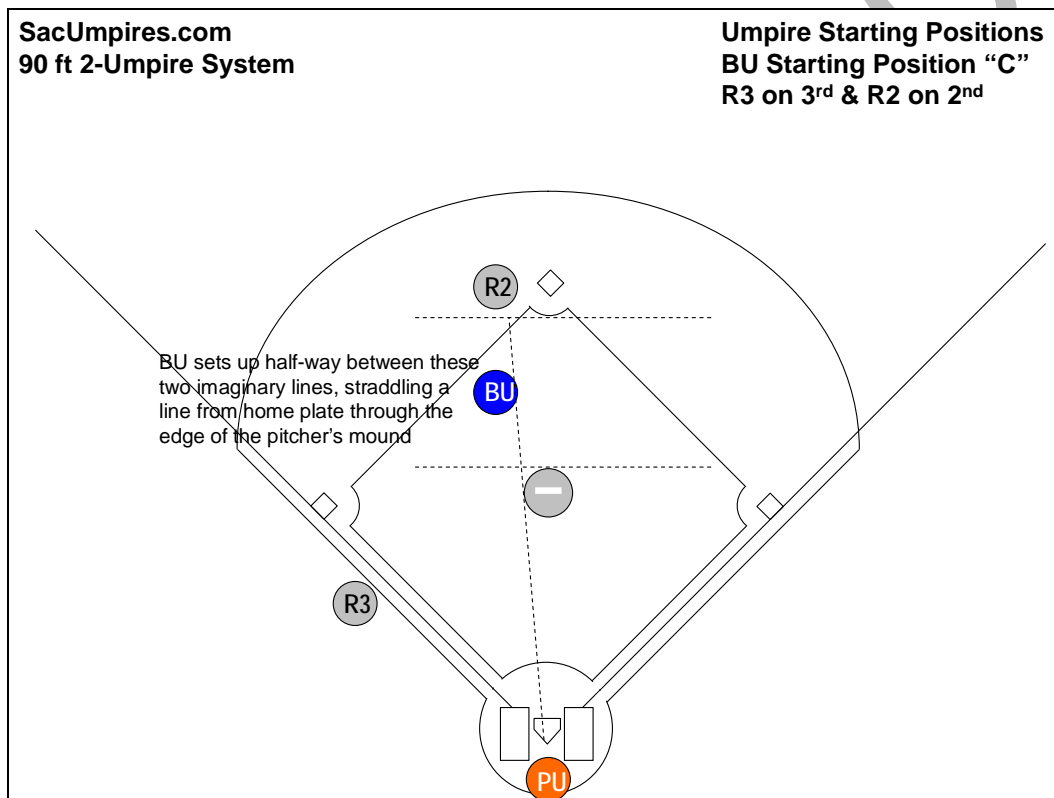


Diagram 7.1.1: Starting Position “C” with R3 on 3rd & R2 on 2nd bases.

7.2 – Pick-Offs and Rundowns *with R3 on 3rd & R2 on 2nd Bases*

7.2.1 – Proper Starting Position Essential for Pick-Offs at 2nd or 3rd Bases (see Diagram 7.1.1):

- It is very important that BU assume the proper starting position “B” in the middle of the infield with R1 on 1st base. This starting position is particularly critical when it comes to pick-offs at 1st base because if BU is too “deep” towards 2nd base to start with, he will never be able to get a proper angle for the pick-off at 1st base and will end up looking up the back end of the play at 1st.

7.2.2 – Pick-Offs at 3rd or 2nd Bases:

• F1 Attempts a Pick-Off at 3rd Base (see Diagram 7.2.2-a):

- BU must be in proper starting position “C” in the middle of the infield (not too deep towards 2nd base, not too close to the mound).
- As F1 begins his throw to 3rd base, BU may use either of the following two procedures:
 - BU will take a quick step forward with his *right* foot, moving in the direction on an “imaginary” 45-foot line along the 3rd base line. After taking this initial step forward, BU will turn (pivoting on his right foot), face the play and set for the call.
 - BU will take two quick steps forward starting with his *left* foot, moving in the direction of an “imaginary” 45-foot line along the 3rd base line. After taking two steps forward (right followed by left), BU will turn (pivoting on his right foot), face the play and set for the call.

Important Notes:

- The preceding two techniques are very similar; the basic difference being how much time is available and how much distance may be gained during the pick-off move. The second alternative allows BU to take one extra steps towards the 45-foot line before turning and facing the play. Always use the time available wisely and position to see the play well.
- The pick-off from F1 takes little time and means BU has very little time to react, step and set. Two steps on this pick is about all that can be achieved realistically.
- Angle is critical for pick-offs – BU shall move towards an “imaginary” 45-foot line along the 3rd base line.
- It is *imperative* that BU be *completely stopped and set* for the pick-off.
- BU’s body should be facing the play and in a standing set position for this play.
- **F2 Attempts a Pick-Off at 3rd Base:**
 - It is possible that F2 may try to pick off R3 at 3rd base with a quick throw following a pitch.
 - BU’s movements would be virtually the same as just described for a pick-off move by F1.
- **Pick-Off Attempted on R2 at 2nd (see Diagram 7.2.2-b):**
 - This situation is covered with some similarity to steals of 2nd base.
 - As BU sees F1 begin the pick-off move towards 2nd base, he will “drop step” (“open the gate”) towards 2nd base with his left foot.
 - BU will keep his eye on the ball and not turning his back on it.
 - As F1 releases the ball, BU would continue to move towards 2nd base.
 - The ball will turn BU into the play as the throw reaches BU (BU should more or less be “pivoting” on his left foot as the throw reaches him).
 - BU should attempt to shoot off the back of the ball as it goes by.
 - BU will turn and focus on the play, keeping in mind that by this time he should be in proper position and angle for the play at 2nd (ideally a few steps to the home plate side of the 2nd base cutout).
 - It is imperative that BU be *completely set and not moving* for this play.
 - A pick-off initiated by F2 is similar to this procedure, but develops over a little more time.

7.2.3 – Rundowns on R3 between Home and 3rd or R2 between 3rd & 2nd Bases:

- **R3 on 3rd Gets into a Rundown between 3rd and Home with R1 on Base Also:**
 - If the rundown occurs between 3rd and home, BU will cover the initial throw and subsequent throws at the 3rd base end of the rundown *only until* PU is able to get into position to assume responsibility for the *entire rundown* (See Diagram 7.2.3-a).
 - As soon as PU is able to get into position, PU will assume responsibility for the *entire rundown*, and he would communicate to his partner, “I’ve got it all, Bill! I’ve got it all!”
 - At that point BU would “drift” back in the direction of R2 on 2nd base, assuming responsibility for R2.
 - Only if R2 from 2nd advances all the way to 3rd base would BU then help out with the original rundown between 3rd and home, then communicating with his partner, “I’ve got this half, Bill! I’ve got this half!” (See Diagram 7.2.3-b).
- **R2 on 2nd Base gets into a Rundown Between 2nd and 3rd with R3 also on 3rd Base (see Diagram 7.2.3-c):**
 - BU would handle this responsibility *alone*.
 - PU would remain at home, being alert for any play to develop on R3 attempting to score from 3rd base.
 - BU must be prepared to bounce “back” to the other runner after an initial play on one of the runners.
 - BU must also be alert for the rundown between 2nd and 3rd to end abruptly with a snap throw to catch R3 on 3rd base.
 - BU must stay alert and be able to react quickly to this possibility.

7.2.4 – If a Pick-Off Occurs on R2 at 2nd and Results in a “Broken Play” (see Diagram 7.2.4):

- (“Broken Play” = the ball gets away at 2nd base and roll towards the outfield)
- BU must be prepared to move into position for a possible play at 3rd base if R2 decides to go.
- BU must also keep his eye on the original play at 2nd base, watching for possible obstruction.

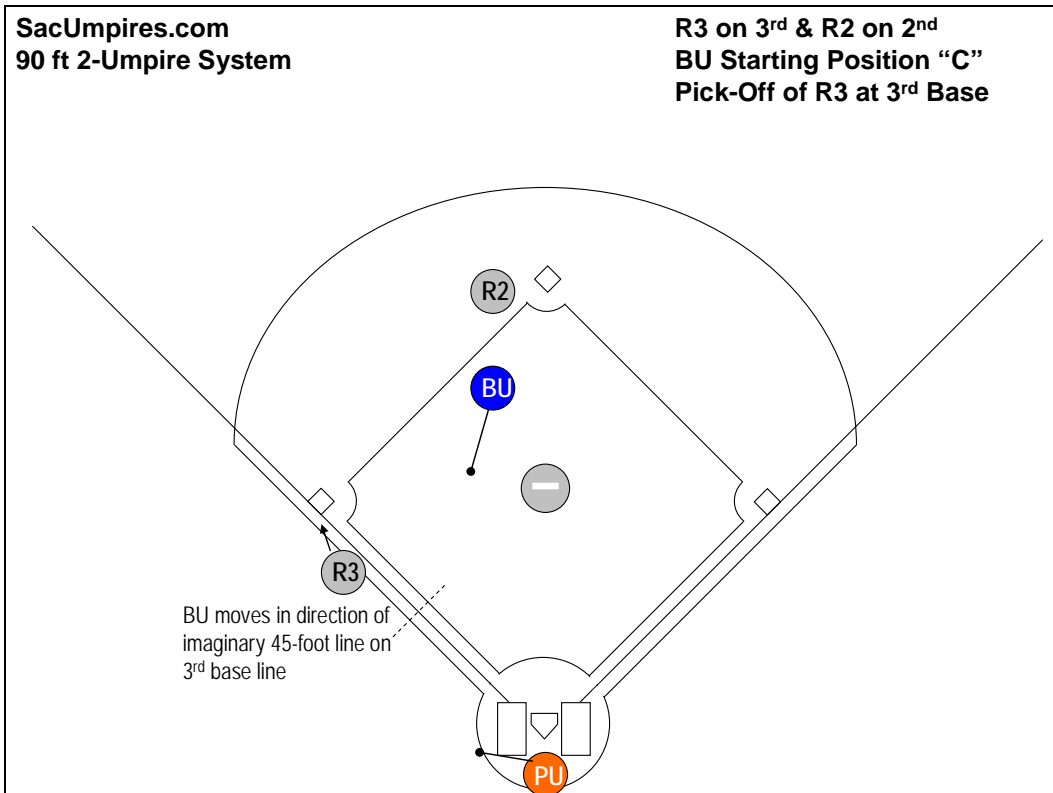


Diagram 7.2.2-a: R3 with a pick-off attempt at 3rd base

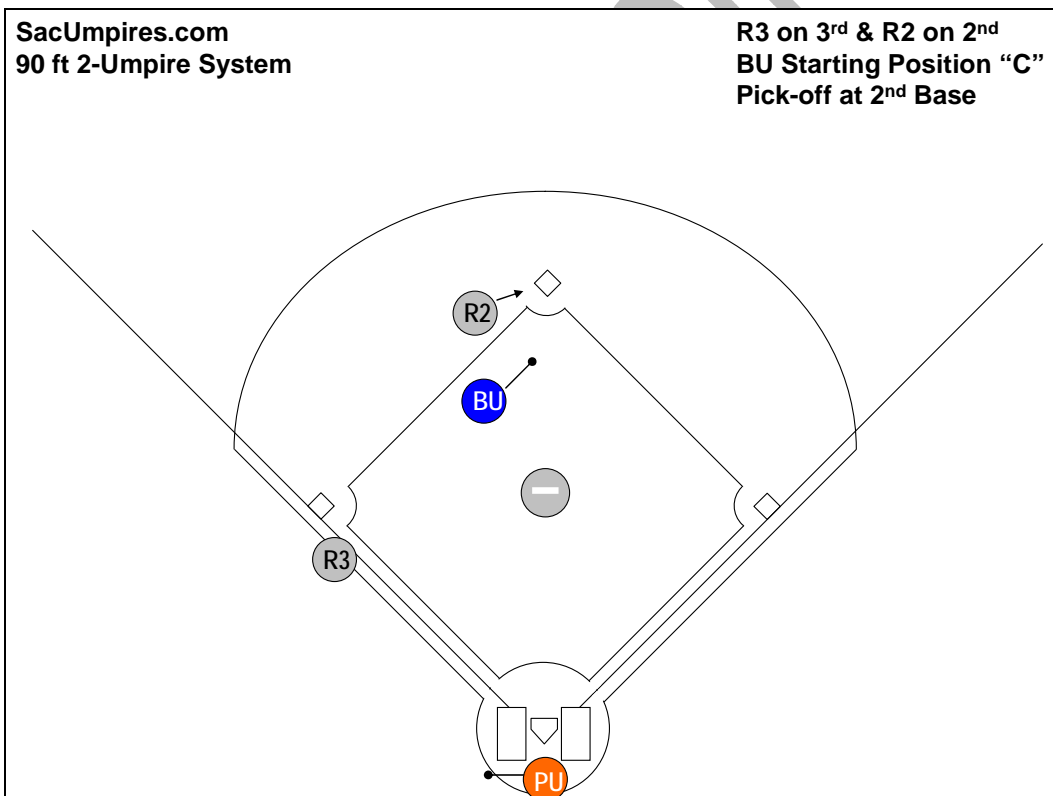


Diagram 7.2.2-b: Pickoff attempt of R2 at 2nd base

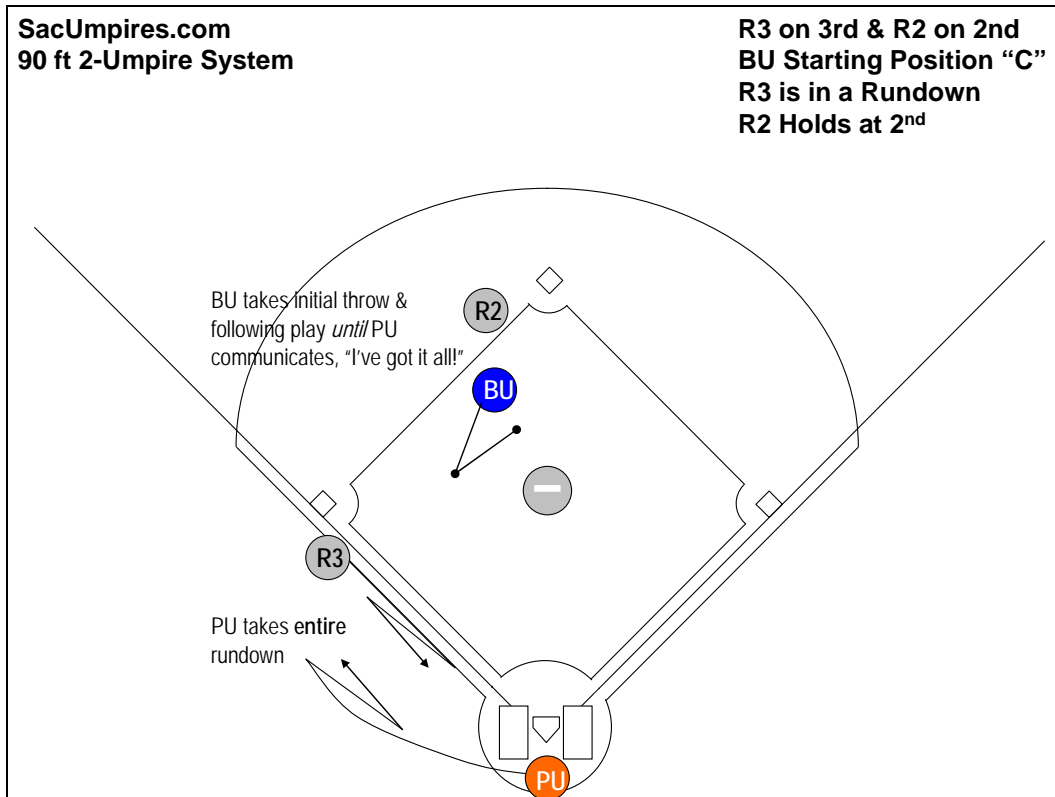


Diagram 7.2.3-a: Rundown on R3 between home and 3rd with R2 holding

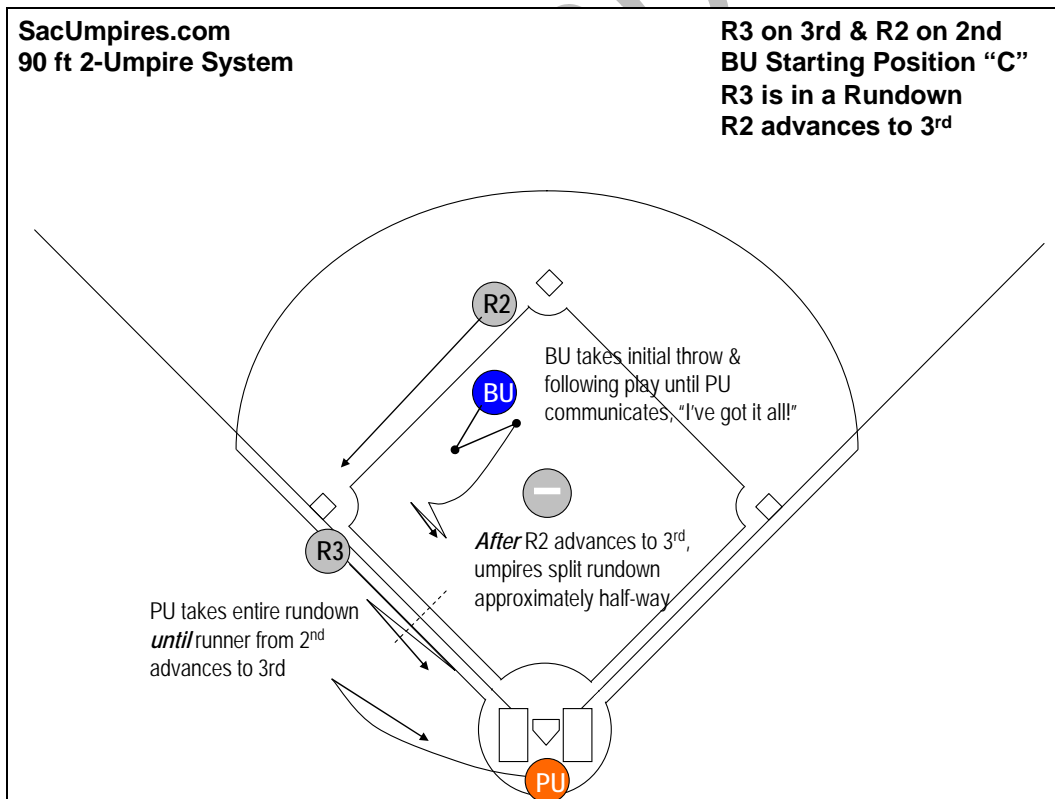


Diagram 7.2.3-b: Rundown between home and 3rd with R2 advancing to 3rd during the rundown

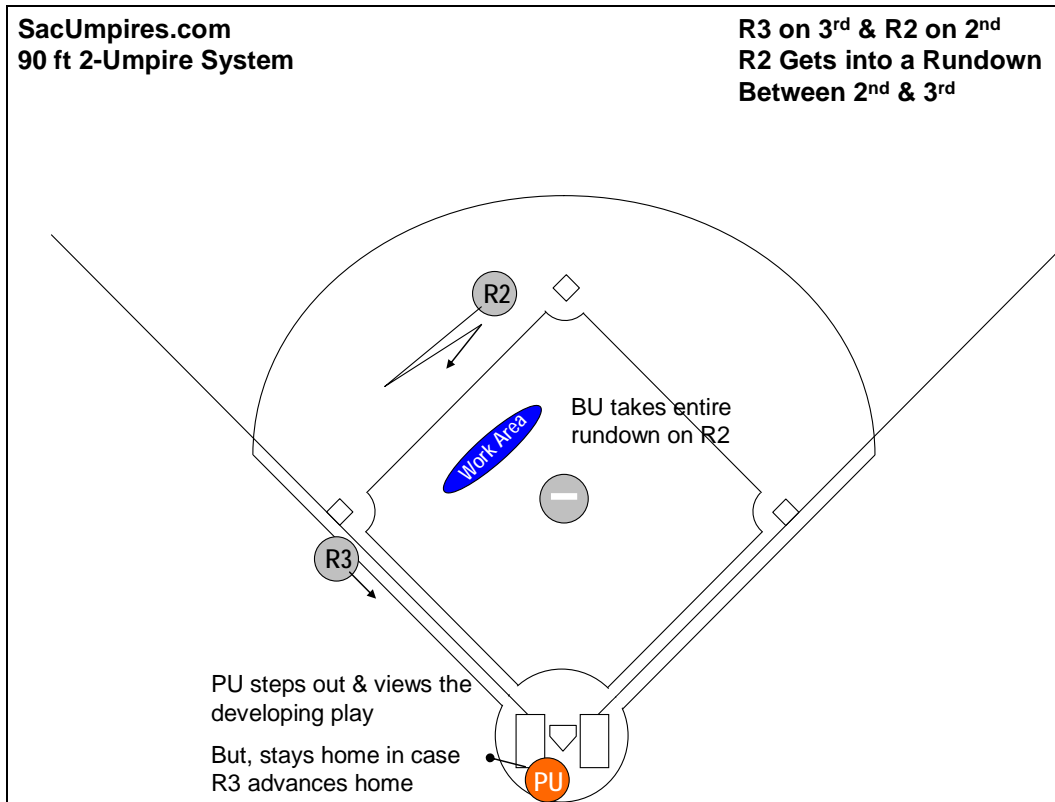


Diagram 7.2.3-c: BU covers R2 on a rundown between 2nd and 3rd bases until PU can position to take the 3rd base end of the rundown

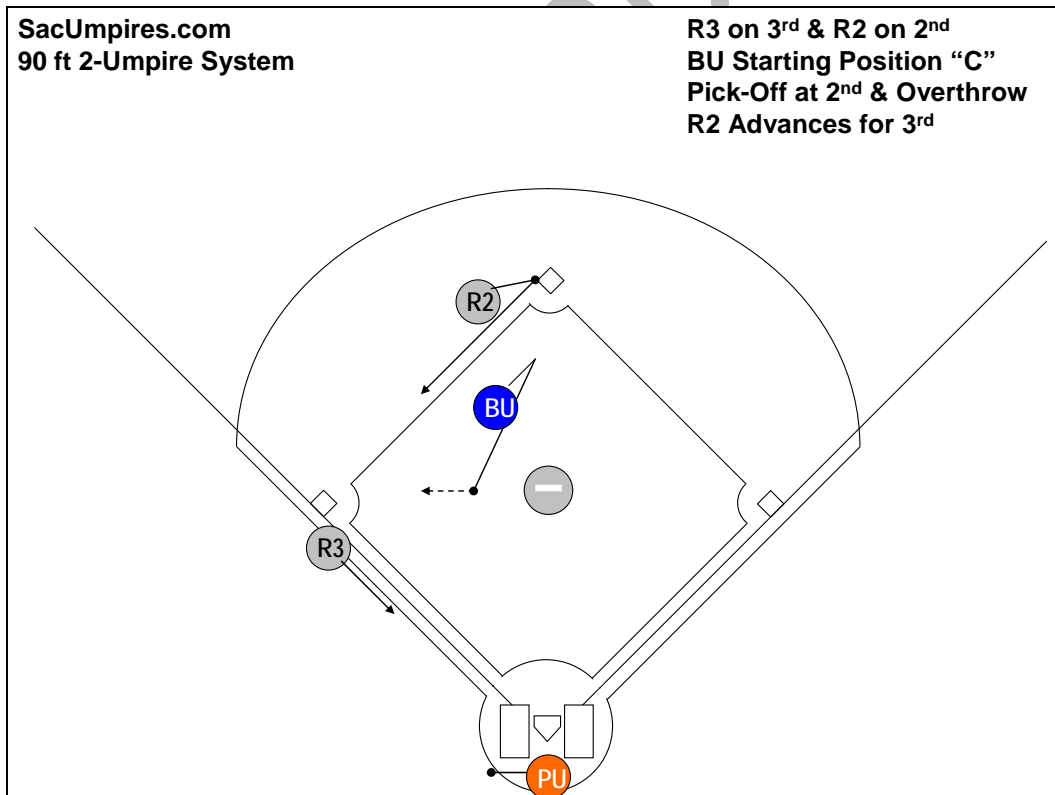


Diagram 7.2.4: Pickoff attempt of R2 at 2nd base with an overthrow

7.3 – Steals *with R3 on 3rd & R2 on 2nd Bases*

7.3.1 – R3 Steals Home

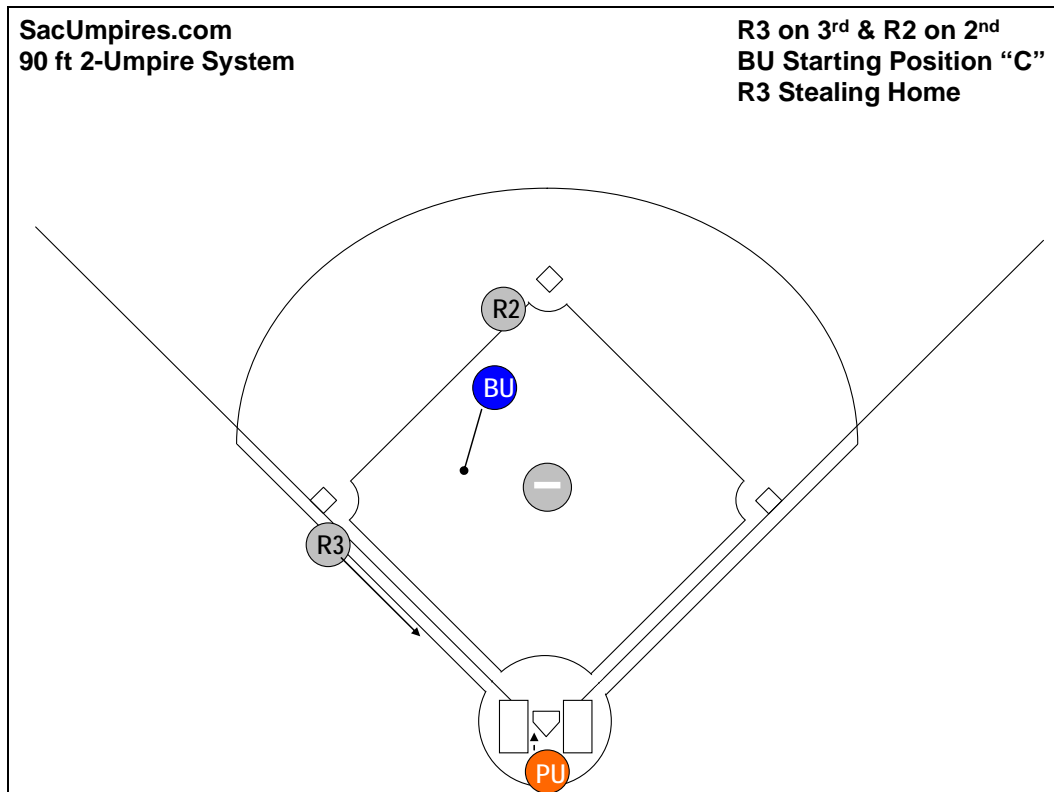


Diagram 7.3.1: R3 is stealing the plate with R3 & R2 on bases.

Umpire Actions & Responsibilities:

- BU:** Read R3's break in your peripheral vision.
PU: Concentrate.
- BU:** Stay in your set position and remain alert for a batted ball.
PU: Determine whether the pitch is a ball or strike.
- BU:** If the ball clears the batter, read R2. If he advances, move cautiously toward the midpoint of the 3rd base line. There may be a subsequent play on R2, either at 3rd if he advances or at 2nd if he starts toward 3rd and retreats.
PU: Do not attempt to remove your mask. If a right-handed batter is up, stay in your slot and take an adjustment step to your left if necessary to open your view of the play at the plate as F2 moves to apply the tag; observe the action as best you can. If there is a left-handed batter at the plate, take an adjustment step and angle so as to best open an angle for viewing the impending play. Be careful not to get blocked out on the play since the left-handed slot position straight-lines you to R3 sliding into the plate.
- PU:** First call the pitch; second declare R3 safe or out.
- PU:** If the pitch gets past F2, prepare for a subsequent tag play at the plate – R2 may attempt to score on the wild pitch.

7.4 – Ground Balls to the Infield *with R3 on 3rd & R2 on 2nd Bases*

7.4.1 – PU's Mechanics on a Ground Ball on the Infield with R3 & R2 on Bases (Not Rolling Up Either Foul Line):

- PU will stay home.
- On a ground ball to the infield (other than those rolling down the foul lines), PU will swing out from behind home plate a few feet into foul territory in the direction of 3rd base to observe the play.
- PU must be prepared to move into position for the play at home plate on R3 from 3rd base.
- There are three reasons for having PU return to the 1st baseline. PU will be responsible for **Primary/Secondary Responsibilities**:
 - PU will be watching for **interference** by BR while out of the 45-foot lane. Should PU see such an infraction, he should make the call. This is not to say, however, that BU may never make such a call. For example, if BU observes BR interfere with the play at 1st base while *clearly* out of the 45-foot lane, it is of course permissible for BU to make this call also.
 - PU will be ready for any **overthrows** at 1st base. If PU sees the ball being overthrown at 1st base, he will immediately and rapidly move with the overthrow and take responsibility for the ball going out of play.
 - PU is also in position to help on "**swipe tags**" on BR at 1st base. Although this is rarely used, it is permissible for BU to ask for help on a "swipe tag" on this play – if, for some reason, BU does not have a good look at the play. (Note that the "appeal" should be initiated by BU *immediately* and *before* a confrontation with a player or manager occurs.) The terminology by BU would be, "Bill, did he tag him?" or "Bill, do you have a tag?" while pointing to PU. The response by PU would be a **very emphatic**, "Yes! He's out on the tag!" or "No! He missed him!" while using a strong visual signal.

7.4.2 – PU's Mechanics on a Ground Ball Rolling Up Either Base Line with R3 & R2 on Bases:

- **Primary/Secondary Responsibilities**: There are three reasons for having PU return to the 1st baseline as discussed in Section 7.4.1 above (interference, overthrows & "swipe tags").
- **PU's Mechanics on a Ground Ball Rolling up the 3rd Base Line with R3 & R2 on Bases**:
 - If the ground ball is up the *3rd base line*, PU will usually take the fair/foul from *a step or two* up the 3rd base line, being prepared to "bounce" back into position immediately for any play at the plate.
 - When the ball is rolling down the 3rd base line in such a way that PU will *not* be able to move down the 3rd base line at all, PU must take the fair/foul from *behind the plate*, straddling the 3rd base line extended (for example, a suicide squeeze play or any other play where it is apparent that R3 from 3rd will attempt to score on the ground ball).
 - PU must also be prepared on ground balls up either line for an initial play at the plate as well as being ready for situations when a subsequent play is made at home plate after an initial play elsewhere.
- **PU's Mechanics on a Ground Ball Rolling up the 1st Base Line with R3 & R2 on Bases**:
 - If the ground ball is up the *1st base line*, PU will take the fair/foul from *behind the plate*, straddling the 1st base line extended.

7.4.3 – BU's Mechanics on a Ground Ball on the Infield with R3 & R2 on Bases (see Diagram 7.4.3-a thru 7.4.3-c):

- BU will cover all plays at 1st, 2nd and 3rd.
- BU will step up and turn with the ball.
- BU will drift a few steps in the direction of the 45-foot line, anticipating a play at 1st base.
- However, BU must be aware of situations where the play might be made at 3rd base instead, and consequently he must react with *good anticipation* as to how the play may develop.
- If the play goes to 1st, BU will take a few more steps towards the 45-foot line, set, and make the call at 1st base.
- *Immediately after* the play at 1st, BU must quickly bounce towards R3 at 3rd, always anticipating a subsequent throw to that base.
- Because of the lead runner at 3rd, BU will not be able to get exceptionally close to the play at 1st base, although with two out he should get a bit *closer* to the play than he would with less than two out.

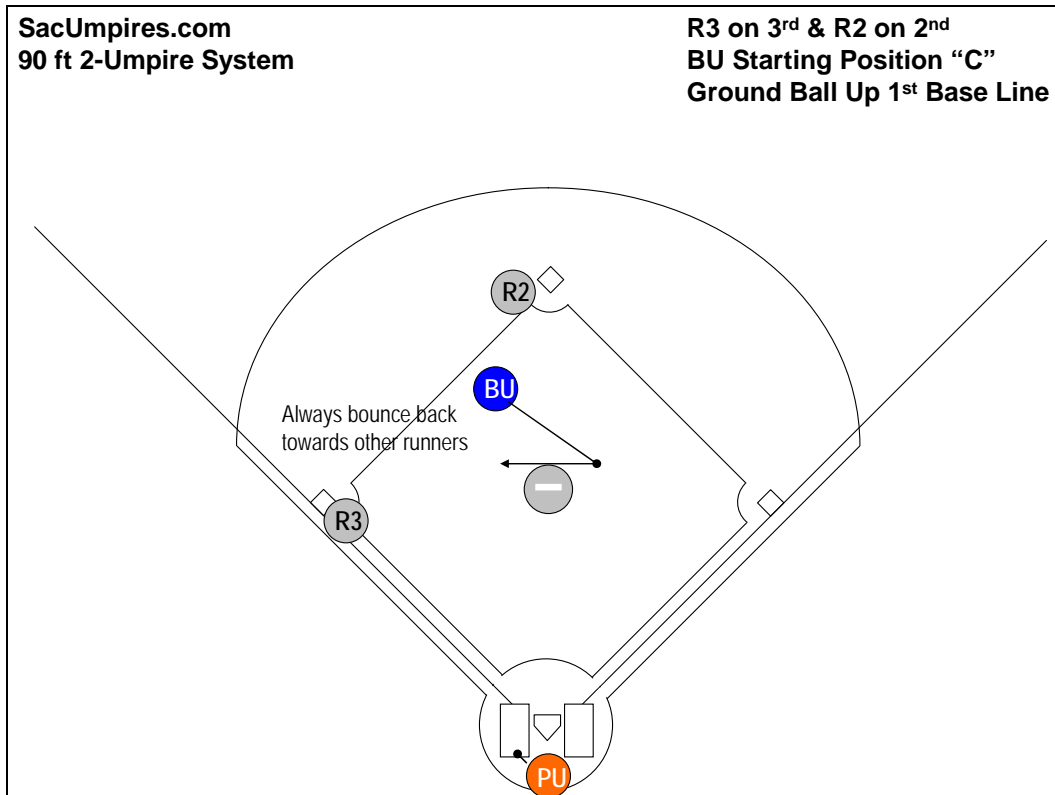


Diagram 7.4.3-a: Ground ball up the 1st base line with play going to 1st base and BU "bouncing" back (R3 is holding).

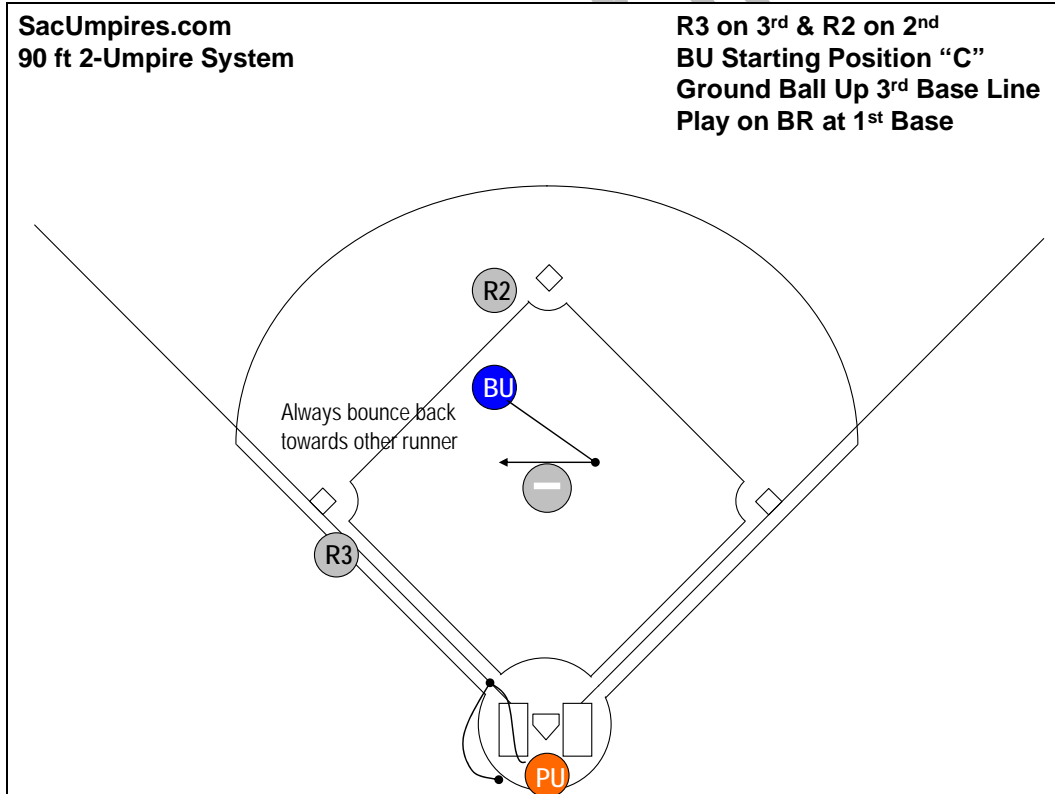


Diagram 7.4.3-b: Ground ball up 3rd base line with play going to 1st base and BU "bouncing" back (R3 is holding).

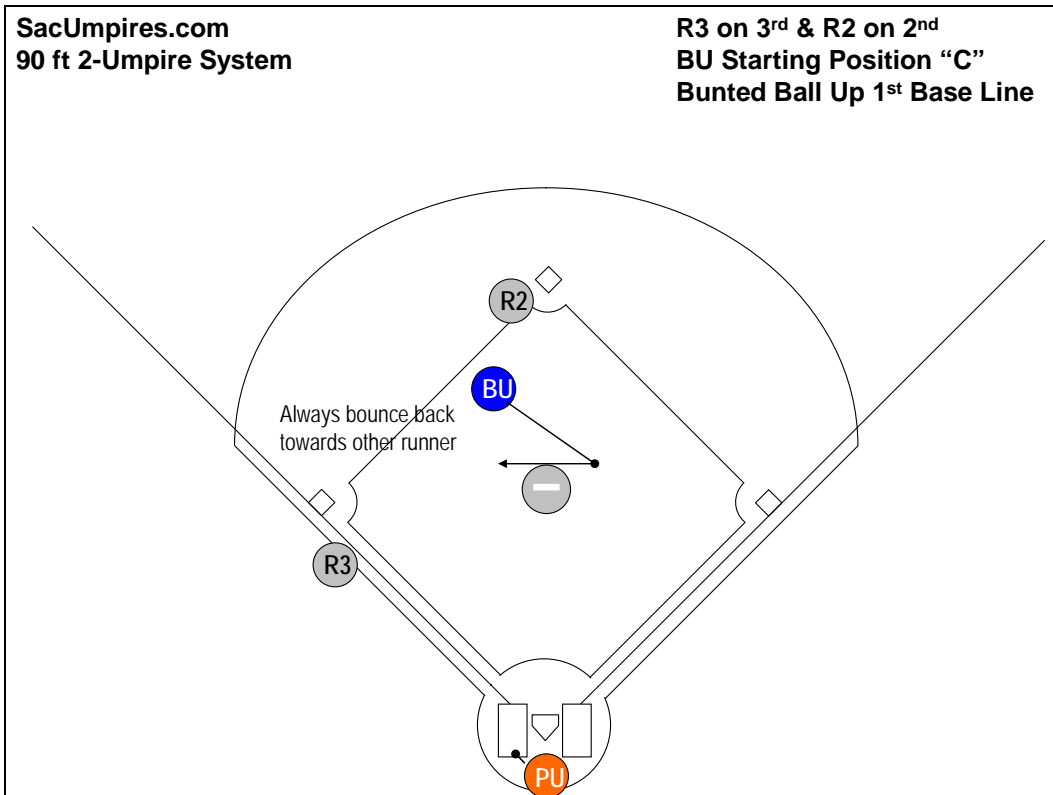


Diagram 7.4.3-c: Bunted ball up 1st base line with play going to 1st base and BU "bouncing" back (R3 is holding).

SacUmpires.com

7.5 – Fly Balls and Line Drives to the Infield *with R3 on 3rd & R2 on 2nd Bases*

7.5.1 – Fly Ball and Line Drive Responsibilities for Balls to the Infield with R3 & R2 on Bases are as Follows (see Diagram 7.5.1):

- PU is responsible for all fly balls and line drives to F1.
- PU will take all fly balls fielded by F2.
- PU is also responsible for either F3 or F5 are *moving towards the foul line*.
- BU is responsible for all other fly balls and line drives to the infield.

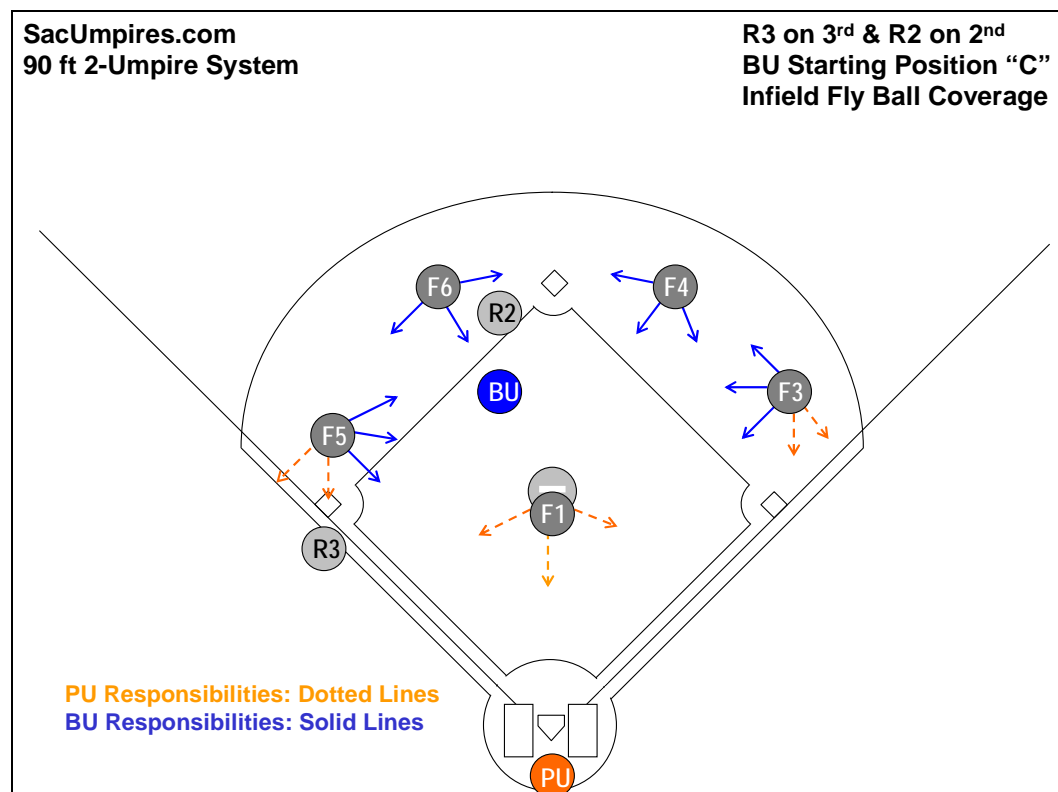


Diagram 7.5.1: Responsibilities for fly balls and line drives to the infield with R3 & R2 on bases

7.5.2 – PU’s Mechanics When the Fly Ball or Line Drives are hit to the Infield with R3 & R2 on Bases:

- PU should swing out from behind home plate a few feet into foul territory in the direction of 3rd base to observe the play (unless the ball is hit near the foul lines).
- If the fly ball is hit near the 1st or 3rd base line, PU will straddle the line to make the call.
- PU’s positioning on line drives to the infield would be exactly the same as just mentioned for fly balls with the exception that it is permissible to move out in front of the plate for line drives back to F1.

7.5.3 – BU’s Mechanics When the Fly Balls or Line Drives are hit to the Infield with R3 & R2 on Bases:

- BU will step up, turn with the ball and face the infielder.
- BU should glance back over his shoulder at 1st base to watch BR touch 1st base.
- It is permissible for BU to take a couple steps backwards toward the mound to open up the field of play as the fly ball is hit.
- If the infielder is moving *in* to make the play, BU may have to move several steps – including to either side of the mound – in order to give the fielder room to make the play.
- BU must guard against taking himself completely out of position in case the ball should be dropped.

7.5.4 – Remember to Vary Intensity of Voice & Signal:

- If the fly ball is a “routine” catch, the umpire need not call or signal anything.
- However, if the catch turns out to be a “difficult” play, the umpire would sell the call as needed.

7.6 – Fly Balls and Lines Drives to the Outfield *with R3 on 3rd & R2 on 2nd Bases*

7.6.1 – Responsibilities for Fly Balls and Line Drives to the Outfield with R1 on 1st – (See Diagram 7.6.1):

- Fly balls (or line drives) from F7 *straight in* all the way to F9 *straight in* (sometimes referred to as the “80%” or the “V”) belong to the **base umpire (BU)**.
- Fly balls (or line drives) where F7 moves any distance towards the *left field line* - his *right* - (sometimes referred to as the “10%”) belong to the **plate umpire (PU)**.
- Fly balls (or line drives) where F9 moves any distance towards the *right field line* - his *left* - (sometimes referred to as the “10%”) belong to the **plate umpire (PU)**

Important Note: It is important that the two umpires **communicate** after the ball is hit on fly balls and line drives to the outfield, particularly when balls are hit to F7 or F9. The reason here is so that each umpire is certain who has responsibility for any given fly ball or line drive to the outfield.

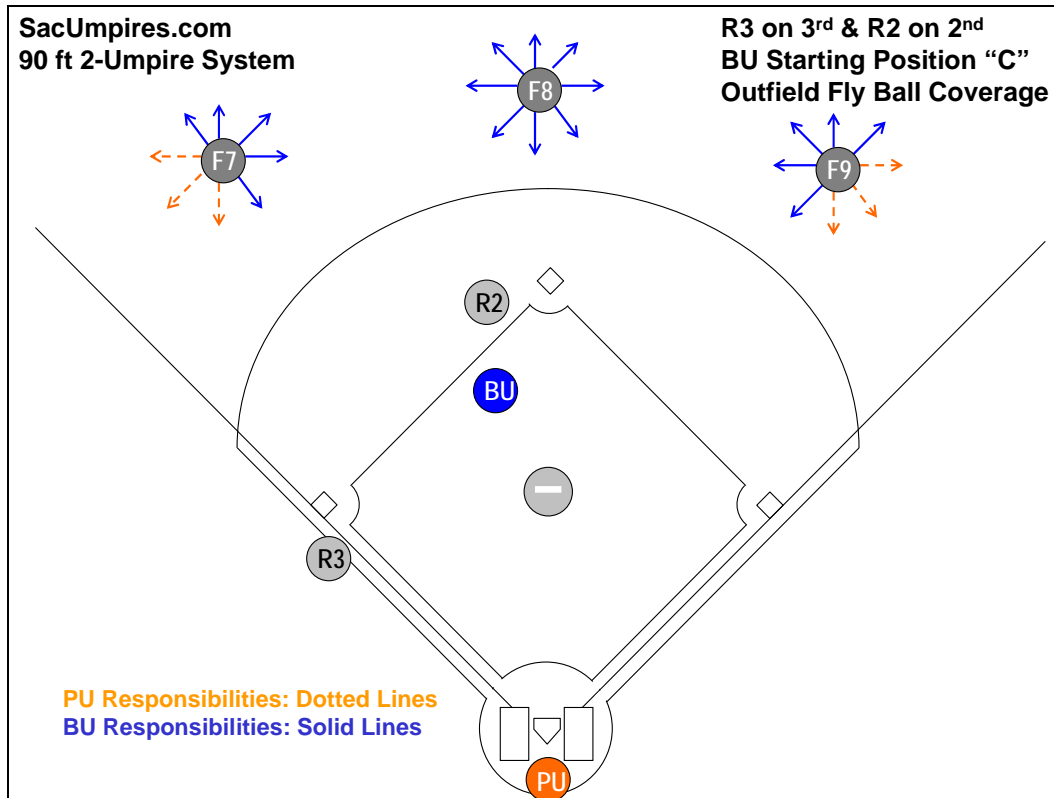


Diagram 7.6.1: Outfield fly ball and line drive responsibilities with R3 & R2 on bases – this coverage is sometimes referred to as “80% - 20%” or “the cone” fly ball coverage.

7.6.2 – Fly Ball or Line Drive to the Outfield with R3 & R2 on Bases:

- BU will step up, turn with the ball, and back up *only two or three steps* towards the mound to open up the playing field. [NOTE: We call this area behind the mound the “working area” for BU. From this “working area” he is in good position for observing his responsibilities and for moving into proper position as plays develop.]
- When BU has multiple runner responsibilities, if no play develops after the base hit, BU should maintain his basic position in this “working area” and *not* be drawn unnecessarily towards a base without a potential play developing there.
- BU should use the “**pause, read, and react**” technique to decide whether or not he should move to the edge of the grass. It allows the play to develop and reveal enough information to determine whether the play is a “trouble” play or not.
- After the ball has been determined to belong to BU (the ball is batted to BU’s outfield coverage area), BU will:
 - “**Pause**” (*hesitate momentarily to gather information about the developing play*)
 - “**Read**” (*focus his attention on the reactions of the outfielder(s) by taking his eye off the ball, zeroing in on the of the outfielders movements, “keying” off the outfielders reactions, and watching for—and determining if the outfielder’s reactions reflect “trouble” or reflect “trouble” cues.*)
 - “**React**” (*pivot into the infield on “routine” outfielder reactions or go out on “trouble” reactions to the ball.*) If there is any doubt about whether a play is “trouble” or not, BU should go out.
- BU is responsible for the tag-up at 2nd base, for the play at 3rd base if R2 from 2nd advances, and for the touch of 1st base by BR.
- BU is also responsible for plays on either runner going back into 2nd or 3rd if the ball is caught; as well as all plays at 1st, 2nd, or 3rd should the ball not be caught.
- PU is responsible for the tag-up at 3rd base as well as any play at the plate on R3 advancing from 3rd base.
- If the fly ball belongs to BU, PU will swing out several steps to his left (usually in the general direction of the 3rd base dugout) in order to line up the tag at 3rd base.
- After the tag-up, PU **immediately** “bounces” back home, setting up for any possible play at the plate on R3 from 3rd.
- The actual distance and direction PU swings out to his left will vary depending on the direction the fly ball is hit, and in most cases it will not be possible for PU to have an exact line on the tag-up; however, this swinging out to the left will help decrease the angle on lining up the tag at 3rd base.

7.6.3 – “Routine” Outfield Fly Ball or Line Drive to BU’s Responsibility Area with R3 & R2 on Bases (See Diagram 7.6.3-a & 7.6.3-b):

- BU will use the “**step up, turn and face the ball**” technique to back up *only two or three steps* towards the mound into the “working area”. Then, BU should use the “**pause, read, and react**” technique to decide whether or not this is a “difficult” play as described in Section 7.6.2.
- From this area BU is in good position for observing his responsibilities as well as for moving into proper position as plays develop.
- BU is responsible for the catch, the tag-up at 2nd and BR touching 1st; and by backing up these few steps towards the mound, BU will have an easier view for watching these responsibilities. Positioning in the “working area” allows BU to move into position easily for any plays at 1st, 2nd or 3rd.
- Watch R2 at 2nd tag-up, watch BR touch 1st and take any play back into 3rd base on R3.
- If the catch is “routine”, BU need not call or signal anything.
- When BU has *multiple runner responsibilities*, if no play develops after the base hit, BU should maintain his basic position in this “working area” and *not* be drawn unnecessarily towards a base without a potential play developing there.
- If BU has only a *single runner responsibility* after the fly ball, then after the catch BU *should “drift”* in the direction of the remaining runner.

7.6.4 – “Difficult” Outfield Fly Ball or Line Drive to BU’s Responsibility Area with R3 & R2 on Bases (See Diagram 7.6.4):

- BU will use the “**step up, turn and face the ball**” technique to back up *only two or three steps* towards the mound into the “working area”. Then, BU should use the “**pause, read, and react**” technique to decide whether or not this is a “difficult” play as described in Section 7.6.2.
- If the fly ball or line drive results in a “difficult” play, BU should **move to the edge of the infield grass in the direction the ball is hit** to cover the play.
- BU will *sell* the call from this position and glance at R2 and then R1 for tag-up purposes (if the ball is caught).
- If the ball is not caught, BU is also responsible for BU’s touch at 1st base by glancing over his shoulder at 1st base.
- BU must **immediately** “bounce” back from the edge of the infield grass into the “working area” to pick up responsibility of the base runners.

7.6.5 – “Difficult” Outfield Fly Balls or Line Drives Down the Right Field Line in PU’s Area with R3 & R2 on Bases (If the Fly Ball or Line Drive Causes F9 to Move Any Distance towards the RF Line) (see Diagram 7-6.5):

- BU will use the “**step up, turn and face the ball**” technique to back up *only two or three steps* towards the mound into the “working area” as described in Section 7.6.2.
- **PU MUST communicate** to his partner that PU has responsibility for the ball.
- If the fly ball or line drive causes F9 to move any distance towards the right field line, PU will communicate to his partner, “I’m on the line, Bill!” to indicate that he is taking the ball.
- PU will move down the 1st base line to observe and rule on the play based on the location of the ball, the location of the fielders, the number of outs, and whether or not R3 on 3rd base is tagging.
- PU’s positioning down the 1st base line on these plays will *vary*.
- PU will go *only so far that he is CERTAIN he will have ample time to get back to home plate for any possible play there on R3 coming from 3rd base.*
- Since R3 will be tagging in many of these situations, it will generally not be possible for PU to move very far down the 1st base line to rule on the ball because of the potential play at the plate (see Diagram 7.6.5).
- Since PU has responsibility for the tag-up at 3rd base, he must take a quick glance over his left shoulder at 3rd base after the ball is touched to judge the tag-up – this is a difficult mechanic for PU. The first priority in these situations is **the ball**, and for that reason PU must be in a good position for any possible fair/foul or catch/no catch decision down the right field line.
- PU will come to a stop to see the play, make the call, and watch the tag-up; and after he has ruled on the play (and watched the tag-up), he will normally hustle back home **IMMEDIATELY** and be ready for any play there.
- However, he still has responsibility for the ball going out of play, and so there may be occasions when he may “linger” on the line, watching the

ball; but normally he will immediately "bounce" back home.

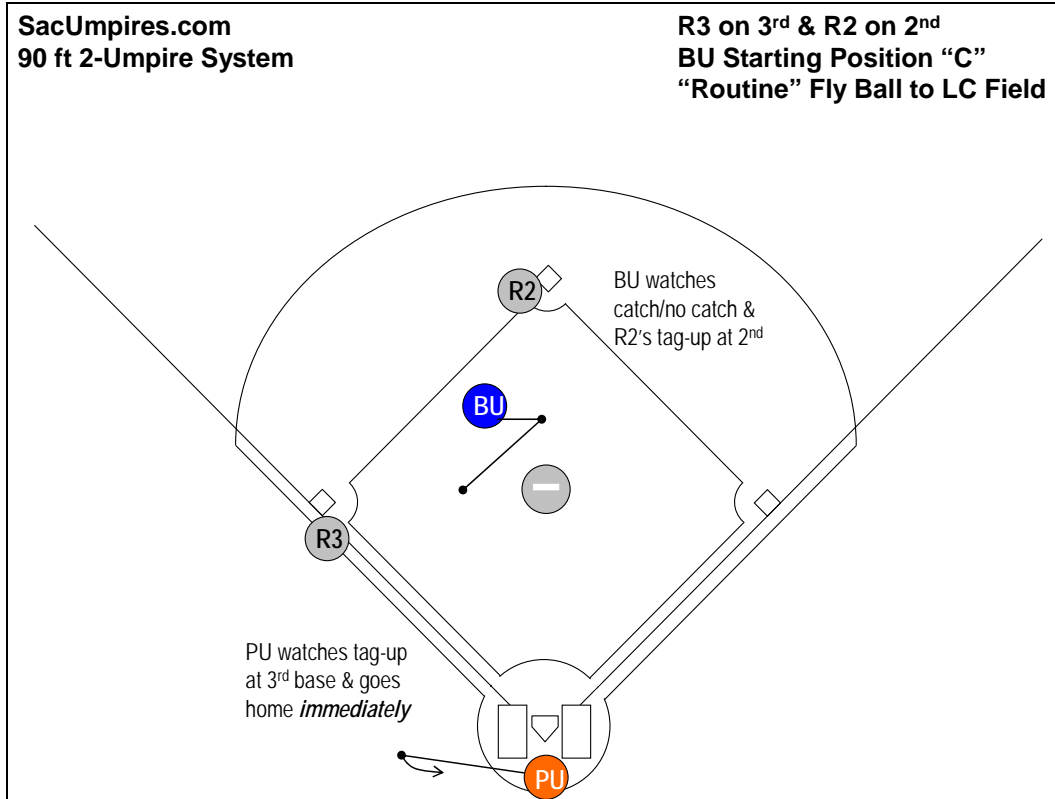


Diagram 7.6.3-a: "Routine" fly ball to left-center with both runners tagging and advancing

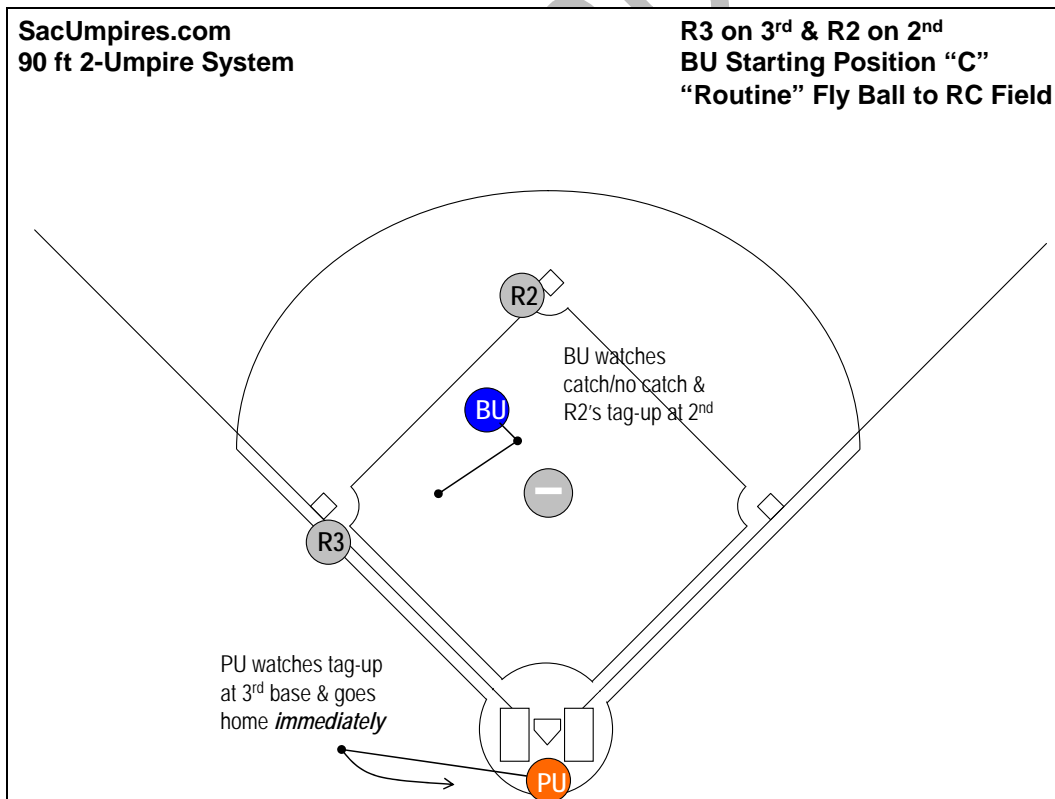


Diagram 7.6.3-b: "Routine" fly ball to right-center with both runners tagging and advancing

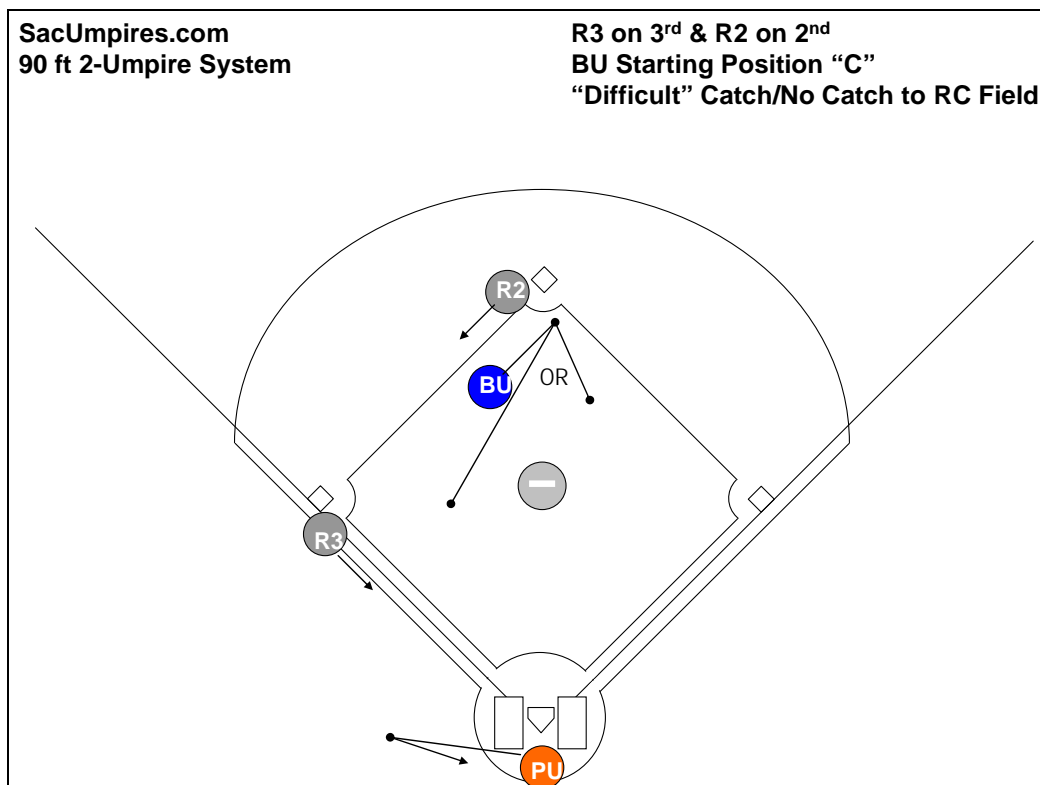


Diagram 7.6.4: "Difficult" catch/no catch in right-center with R3 & R2 on bases

7.6.6 – "Difficult" Outfield Fly Ball or Line Drive Down the Left Field Line in PU's Area with R3 & R2 on Bases (If the Fly Ball or Line Drive Causes F7 to Move Any Distance towards the LF Line) (see Diagram 7-6.6-a & 7.6.6-b):

- BU will use the "step up, turn and face the ball" technique to back up *only two or three steps* towards the mound into the "working area" as described in Section 7.6.2.
- PU will take the ball and communicate loudly to his partner, "I've got the ball, Bill!" or "That's my ball, Bill!"
- PU will move up the 3rd base line to rule on the play.
- PU will go up the line *only so far that he is certain he will have ample time to get back to home plate for any possible play there.*
- PU's position will vary, depending on the location of the ball, the speed of the runner, whether or not the runner is tagging, the number of outs, etc.
- PU also has responsibility for the tag-up at 3rd base, he must glance at R3 as the ball is touched – this is a difficult mechanic. PU must remember that the first priority is **the ball**.
- PU will come to a stop to see the play, make the call, and watch the tag-up.
- PU will then immediately hustle quickly back home, communicating to his partner, "Going home, Bill! Going home!"
- PU will still have responsibility for the ball going out of play in this situation, and so he will need to keep his eye on the ball.
- PU must never go so far down the line that he does not have ample time to return to the plate and set up in proper position for any play on the runner coming from 3rd base.
- If the ball is not caught, PU will return to the plate area and prepare for any potential plays developing.

7.6.7 – Remember: The First Priority – Watching the Ball:

- IT IS VERY IMPORTANT TO NOTE THAT IN FLY BALL COVERAGE, THE FIRST PRIORITY IS **ALWAYS THE BALL**.
- There may be an occasion when BU may miss BR touching 1st base because BU had to keep his eye on the ball.
- There may also be a time when BU does not have the best look at the tag-up at 1st because he had to move to the edge of the grass for a "difficult" catch in the outfield.
- This is simply a drawback of the two-umpire system.

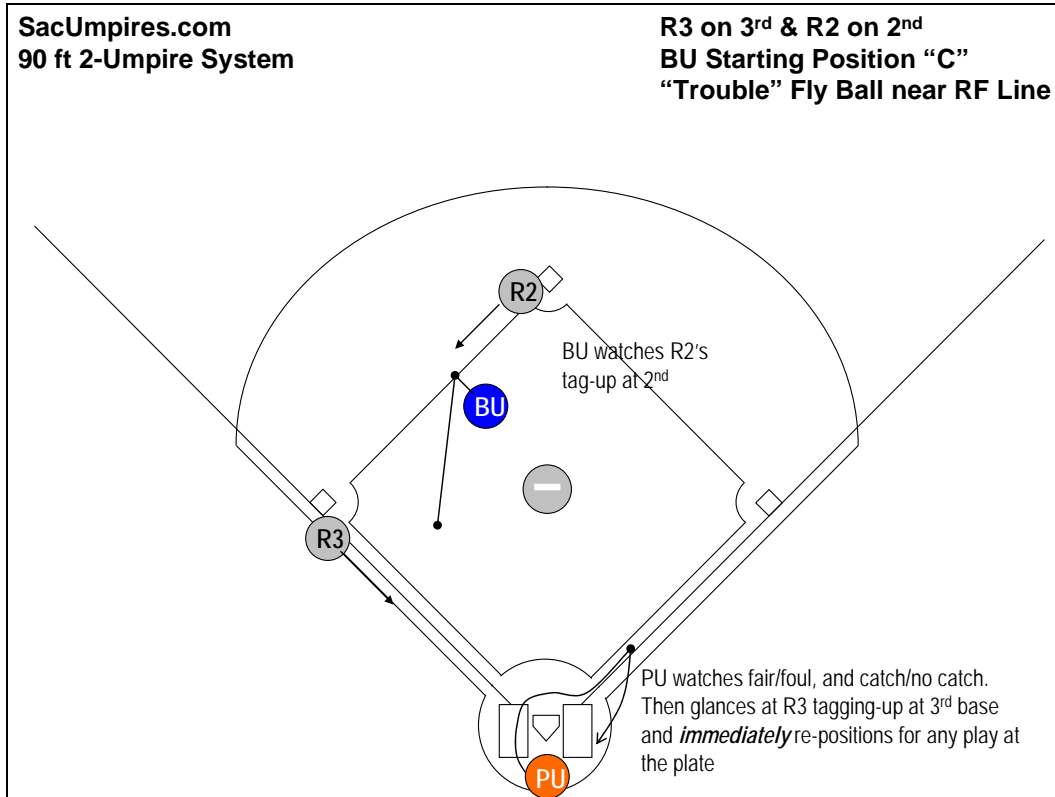


Diagram 7.6.5: Fly ball to F9 moving toward the line on a fly ball with both runners tagging and advancing

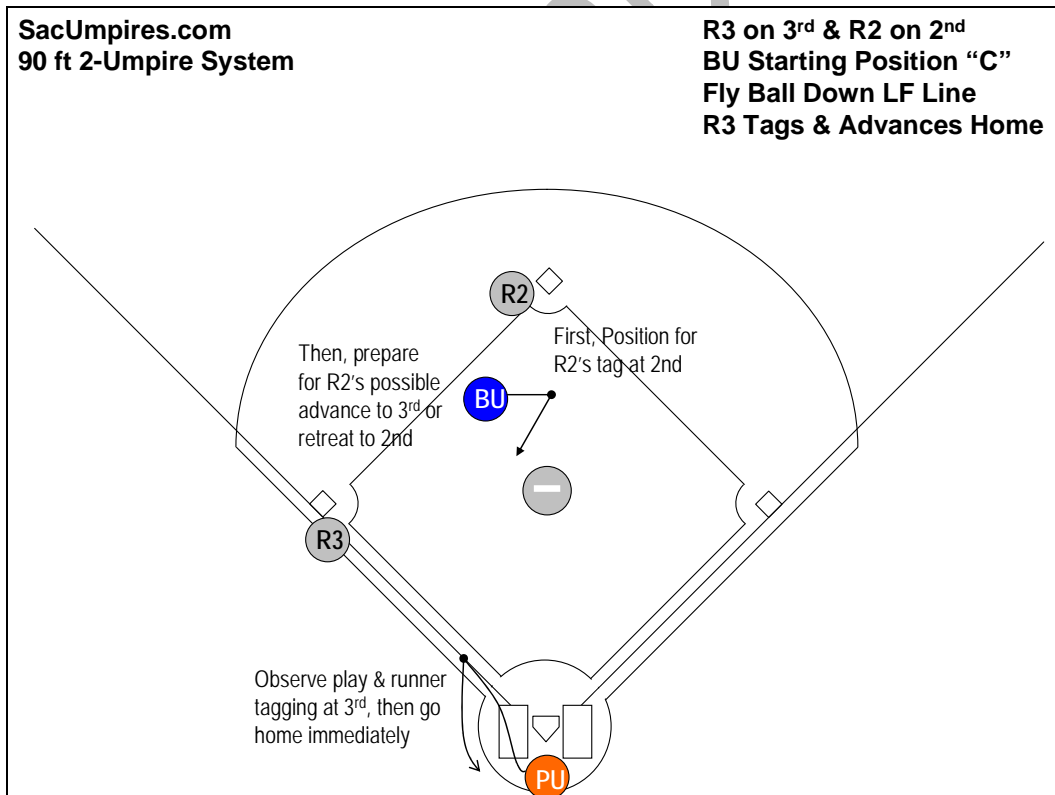


Diagram 7.6.6-a: Fly ball down left field line with R3 advancing after tagging up

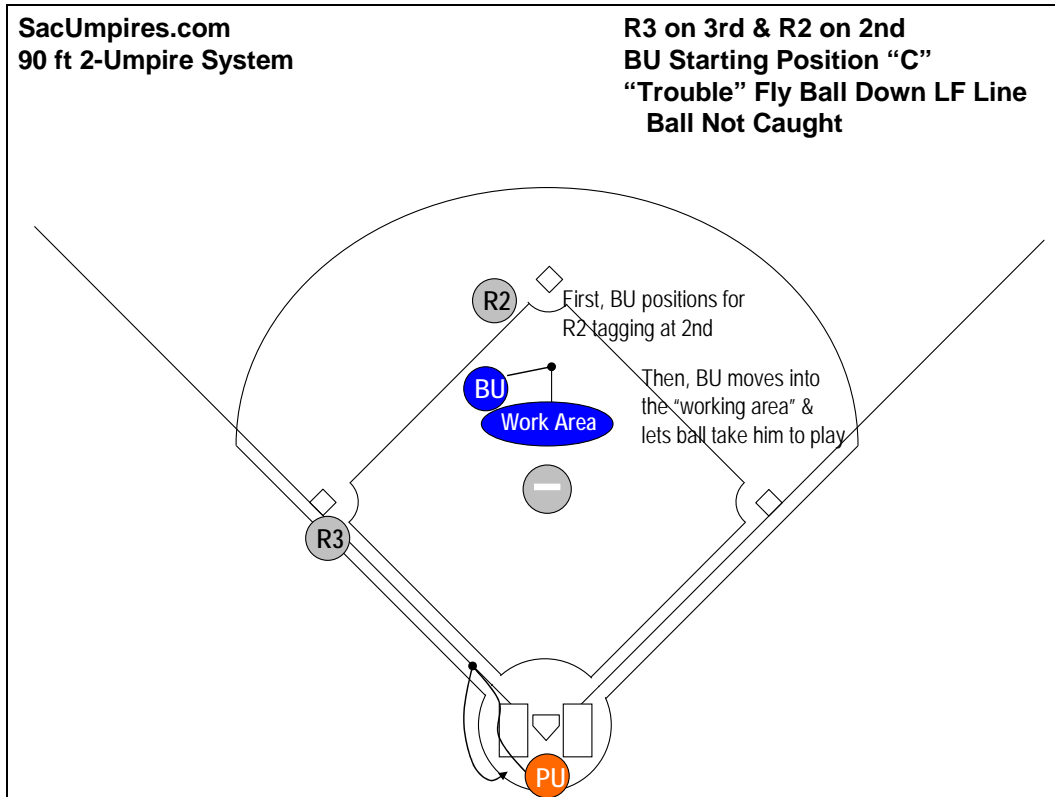


Diagram 7.6.6-b: "Trouble" fly ball down left field line: ball not caught

SacUmpires.com

7.7 – Base Hits to the Outfield *with R3 & R2 on Bases*

7.7.1 – Responsibilities on “Obvious” Base Hit to the Outfield with R2 and R3 on Bases (i.e., no possible fair/foul or catch/no catch on the play):

- PU will stay home.
- BU will have responsibility for all plays at 1st, 2nd and 3rd.
- PU is responsible for all touches of home plate and for all touches of 3rd except for BR.
- BU is responsible for all touches of 1st and 2nd and for the touch of 3rd by BR.

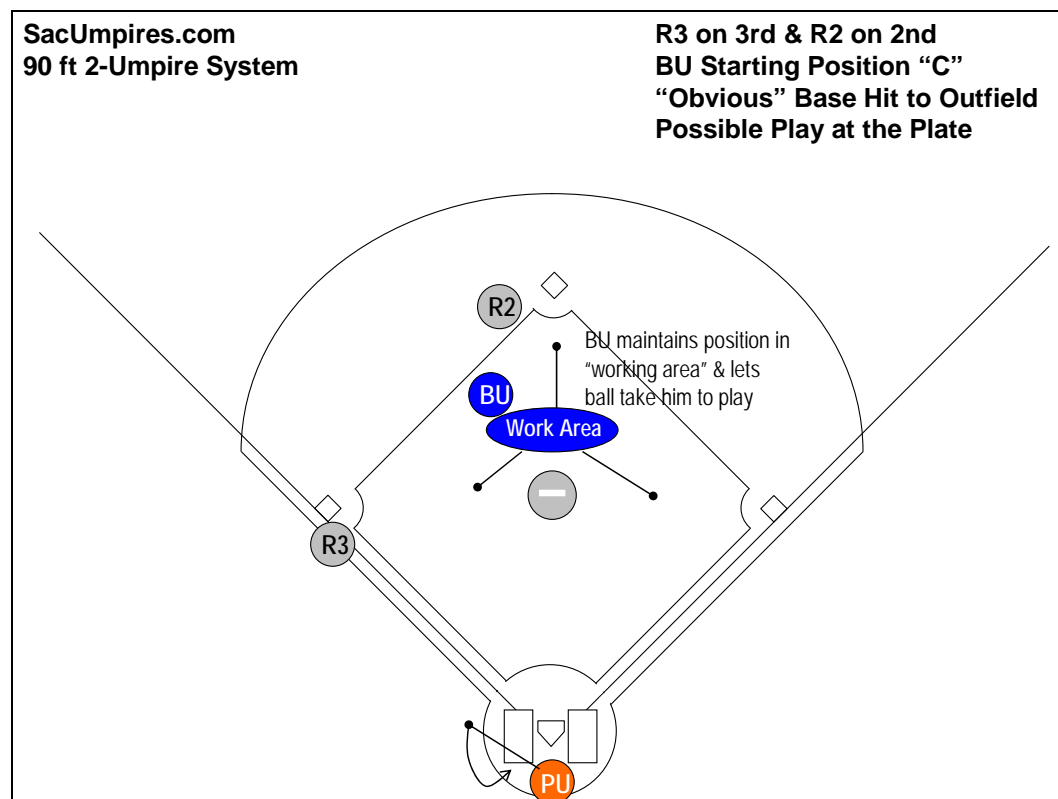


Diagram 7.7.1: “Obvious” base hit to the outfield with possible play at the plate

7.7.2 – Mechanics on “Obvious” Base Hit to the Outfield with R2 and R3 on Bases:

- PU will swing out from behind home plate a few feet into foul territory in the direction of 3rd base to watch R2 from 2nd touch 3rd, watch R3 from 3rd touch home plate, and to observe the play.
- As the ball is hit to the outfield, it is a good idea for PU to communicate to his partner, “Staying home, Bill!”, as a reminder that BU has all plays on the bases and that PU will remain at home.
- BU will step up, turn with the ball, and back up *only two or three steps* towards the mound (into the “working area”) to open up the playing field (as described in [Section 7.6.2](#)).
- BU will have responsibility for all plays at 1st, 2nd, and 3rd as well as the touch of 1st by BR.
- BU must be ready to move into position for any play on the bases (as described in [Section 7.7.3](#)).
- BU will let the ball take him to the play – keeping in mind the concepts of proper distance and angle to the play as well as being set to see the play and make the call.

7.7.3 – Staying within the “Working Area”:

As the ball is being thrown to the infield with **multiple runners** on base, BU should let the ball take him to the play. Only when BU anticipates the potential for a play should he move out of the “working area” and “drift” (or commit) towards a base into a position for his developing play. If no play develops (or is anticipated) on the bases or runners simply advance and no play develops on them, BU would *maintain* his position within the “working area.” *This is an important concept and mechanic and applies to all situations when more than one runner is on base -not just with R3 and R2.*

IMPORTANT NOTE ** The concept of “shading” or “sliding” closer to the umpire’s **sole runner** holds in **all** situations. That is, whenever a play develops so that BU umpire is with **only one runner**, the umpire should “slide”, (“shade”) *closer to that runner* since that is his only responsibility. **THIS IS AN IMPORTANT CONCEPT AND MECHANIC.**

7.8 – “Time” Plays with R3 & R2 on Bases

7.8.1 – Possible “Time” Play with 2 out and R3 and R2 on Bases:

- The two umpires would alert each other to this situation with a prearranged inconspicuous signal before every batter when R3 and R2 are on bases with 2 out.
- (A commonly used signal is to indicate 2 out and then to point down to home plate. Both umpires would signal this.)

7.8.2 – “Time” Play Situation with 2 out and R3 and R2 on Bases:

- On virtually any ball hit to the outfield PU will stay home (an exception would be if PU must go up the 1st or 3rd base line to rule on a play in the outfield – and even then he would *immediately* break quickly (“bust”) home for the “time” play after ruling on the play).
- PU should communicate his location to BU on any obvious hit to the outfield by shouting, “Staying home, Bill!” or “I’m home, Bill!”
- This reminds BU that he has responsibility for all plays at 1st, 2nd and 3rd.
- It also reminds PU of the potential for the “time” play to occur and the necessity for him to stay home and in proper position for that reason (see Diagram 7.8.2).
- PU will position approximately 6 to 8 feet behind home plate in a *straight line* between R2 touching home and the 3rd out occurring on the bases.
- PU will watch carefully to judge whether R2 crosses the plate before or after the third out is made on BR on the bases.

7.8.3 – PU Will Communicate This Information to the Official Scorer by turning towards the press box and using the following mechanics:

- **If the run scores:** “That run scores!” “That run scores!” (while facing the plate and pointing twice at home plate emphatically with his right arm); and then turning around and pointing up to the press box while exclaiming, “Score that run!” (Alternative terminologies include: “The run scores! The run scores! Score the run!” or “Score that run! Score that run! That run scores!”) (Note that if more than one run scored on the play, PU would additionally indicate both visually and verbally to the official scorer the total number of runs that scored on the play *after* displaying the time play mechanic.)
- **If the run does not score:** “No run scores!” “No run scores!” (or “No run! No run!”) while the press box and waving his arms in a cross-wise fashion in front of his upper body above head level.

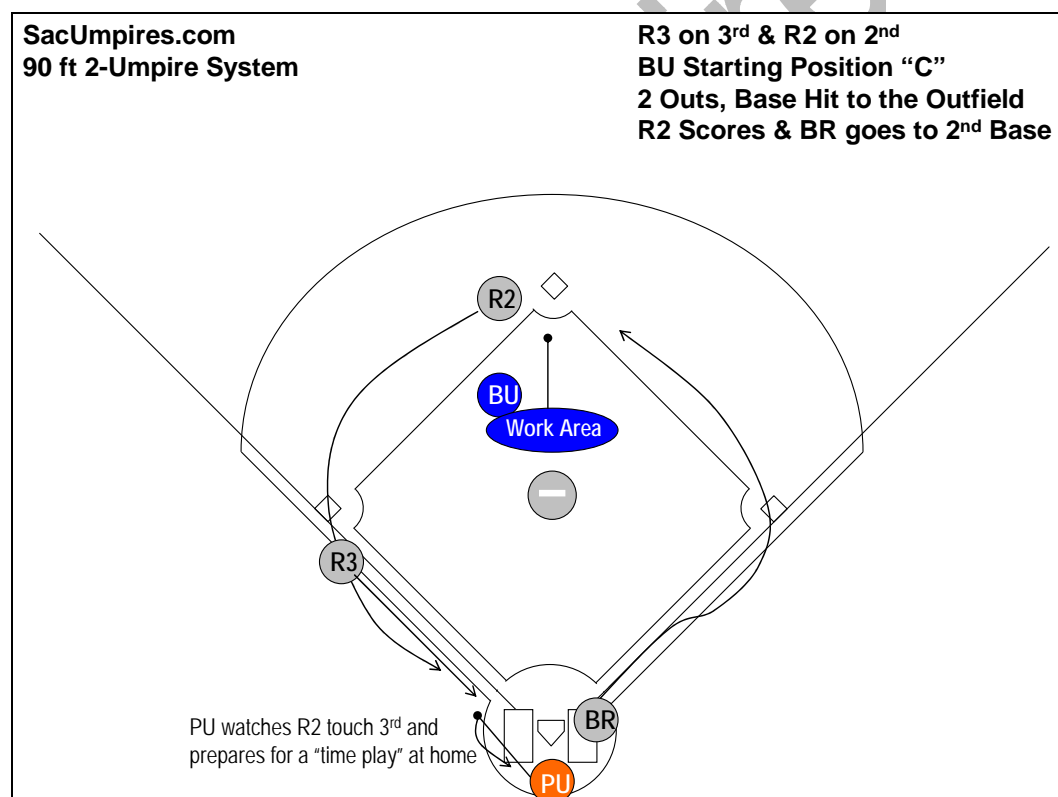


Diagram 7.8.2: PU setting up for “time” play – R2 scoring with BR being thrown out at 2nd base with two (2) outs