

## Section 4.0 – R3 on 3<sup>rd</sup> Base

### 4.1 – General Positioning – Starting Position “C” with R3 on 3<sup>rd</sup> Base

#### 4.1.1 – BU’s Starting Position with R3 on 3<sup>rd</sup>:

- BU will position on the 3<sup>rd</sup> base side of the infield.
- BU will position himself midway between the edge of the grass of the pitcher’s mound and the 2<sup>nd</sup> base cutout,
- BU should position himself so that if an “imaginary” line were drawn from home plate through the left edge of the pitcher’s mound towards 2<sup>nd</sup> base, BU would be straddling that line.
- BU’s body should be squared to the edge of home plate.
- This position is often referred to as **Starting Position “C”**

#### Important Notes:

- (The positioning just described refers to fields where the grass lines are as recommended the Official Rules and as shown in **Diagram 4.1.1**. BU will have to adjust accordingly on fields which vary from this standard.) This is the *same* positioning that will be used with a runner on 2<sup>nd</sup> base only, runners on 1<sup>st</sup> and 2<sup>nd</sup>, 2<sup>nd</sup> and 3<sup>rd</sup> or bases loaded.
- This starting positioning “C” with a runner on 2<sup>nd</sup> base only is very important, and umpires should make sure that they are *not too deep* towards 2<sup>nd</sup> base when they assume this position. If BU is positioned midway between the mound and 2<sup>nd</sup> base as described in the previous paragraph, he will be in a good starting position for steals at 3<sup>rd</sup> base (see **Section 4.3**) as well as other plays to the infield.

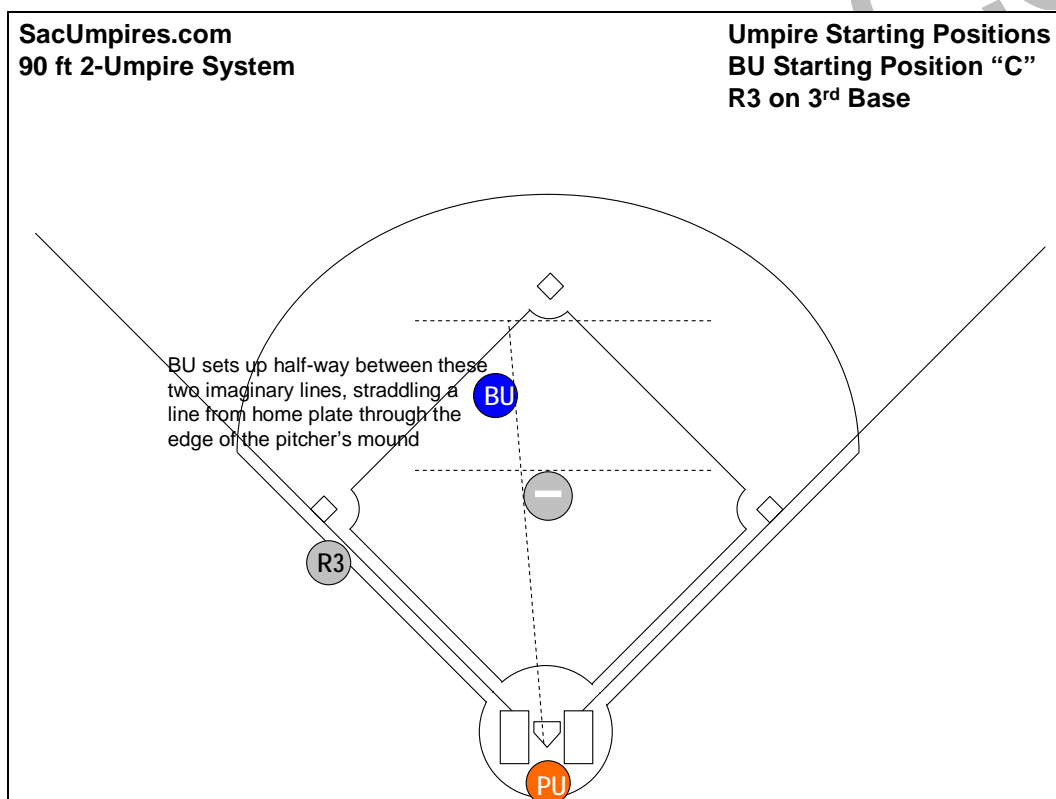


Diagram 4.1.1: Starting Position “C” with R3 on 3<sup>rd</sup> base only, BU will position himself in starting position “C”

## 4.2 – Pick-Offs at 3<sup>rd</sup> Base and Rundowns *with R3 on 3<sup>rd</sup> Base*

### 4.2.1 – Proper Starting Position Leads to Superior Play Viewing:

- Proper Starting Position Essential for Pick-Offs at 2<sup>nd</sup> or Steals of 3<sup>rd</sup> Base (see Diagram 3.1.1):
  - It is very important that BU assume the proper starting position “C” in the middle of the infield with R3 on 3<sup>rd</sup> base. This starting position is particularly critical when it comes to pick-offs at 3<sup>rd</sup> base because if BU is too “deep” towards 2<sup>nd</sup> base to start with, he will never be able to get a proper angle for the pick-off at 3<sup>rd</sup> base and will end up looking up the back end of the play of both.

### 4.2.2 – Pick-Off with R3 at 3<sup>rd</sup>:

- F1 Makes a Pick-Off Attempt at 3<sup>rd</sup> (See Diagram 4.2.2):
  - BU must be in proper starting position “C” in the middle of the infield (not too deep towards 2<sup>nd</sup> base, not too close to the mound).
  - As F1 begins his pick-off throw to 3<sup>rd</sup> base, BU may use either of the following two procedures:
    - BU will take a quick step forward with his *right* foot, moving in the direction on an “imaginary” 45-foot line along the 3<sup>rd</sup> base line. After taking this initial step forward, BU will turn (pivoting on his right foot), face the play and set for the call.
    - BU will take two quick steps forward starting with his *left* foot, moving in the direction of an “imaginary” 45-foot line along the 3<sup>rd</sup> base line. After taking two steps forward (right followed by left), BU will turn (pivoting on his right foot), face the play and set for the call.
- Important Note:** The preceding two techniques are very similar; the basic difference being which foot begins the pick-off move and how many steps are taken. As mentioned previously, either of the preceding two techniques is acceptable in covering pick-offs at 3<sup>rd</sup> base.
  - It is *imperative* that BU be **completely stopped and set** for the pick-off.
  - It is very important that BU set up in the proper starting position “C”.
  - Angle is critical for pick-offs – BU shall move towards an “imaginary” 45-foot line along the 3<sup>rd</sup> base line.
  - BU should be completely stopped and set for the play.
  - BU’s body should be facing the play and in a set position for this play.
- F2 Attempts a Pick-Off at 3<sup>rd</sup>:
  - It is possible that F2 may try to pick off R3 at 3<sup>rd</sup> base with a quick throw following a pitch.
  - BU’s movements would be virtually the same as just described for a pick-off move by F1.

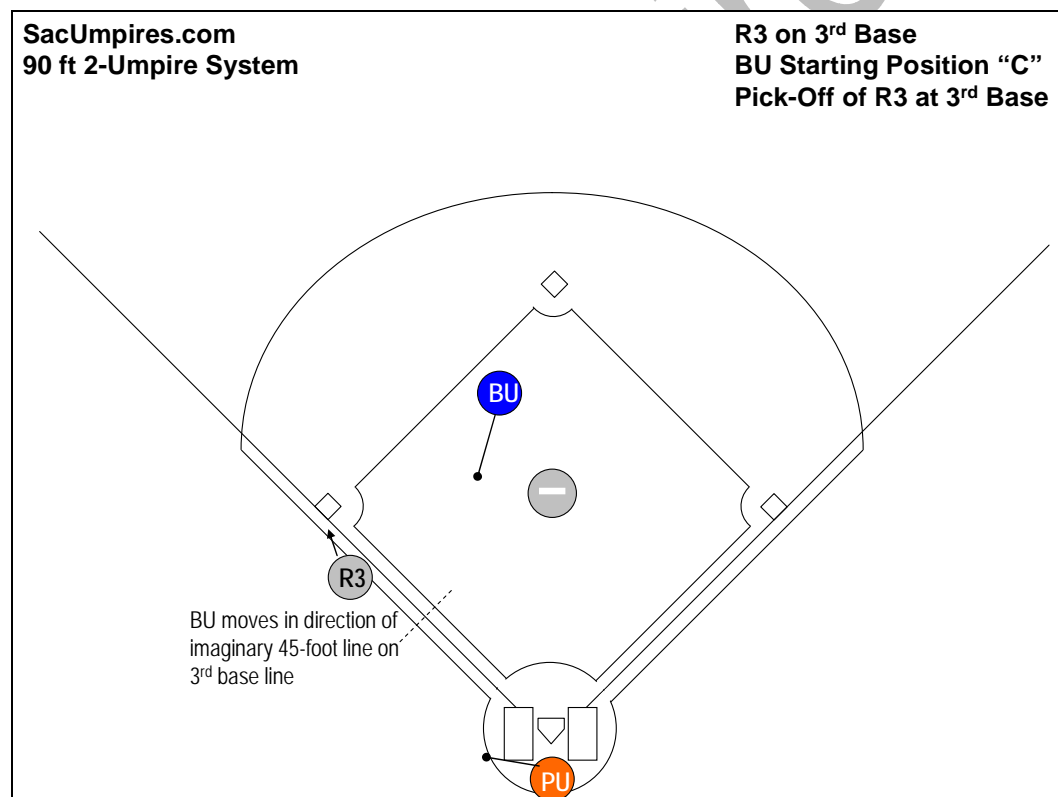


Diagram 4.2.1: R3 with a pick-off attempt at 3<sup>rd</sup> base

4.2.3 – Rundown between 3<sup>rd</sup> and Home with R3 on 3<sup>rd</sup>:

- The umpires will split the rundown “half-and-half;” i.e., PU will take the home plate half of the rundown while BU takes the 3<sup>rd</sup> base half.
- Communication between the umpires would be, “I’ve got this Bill! I’ve got this half!” or “Half and half! Half and half!”

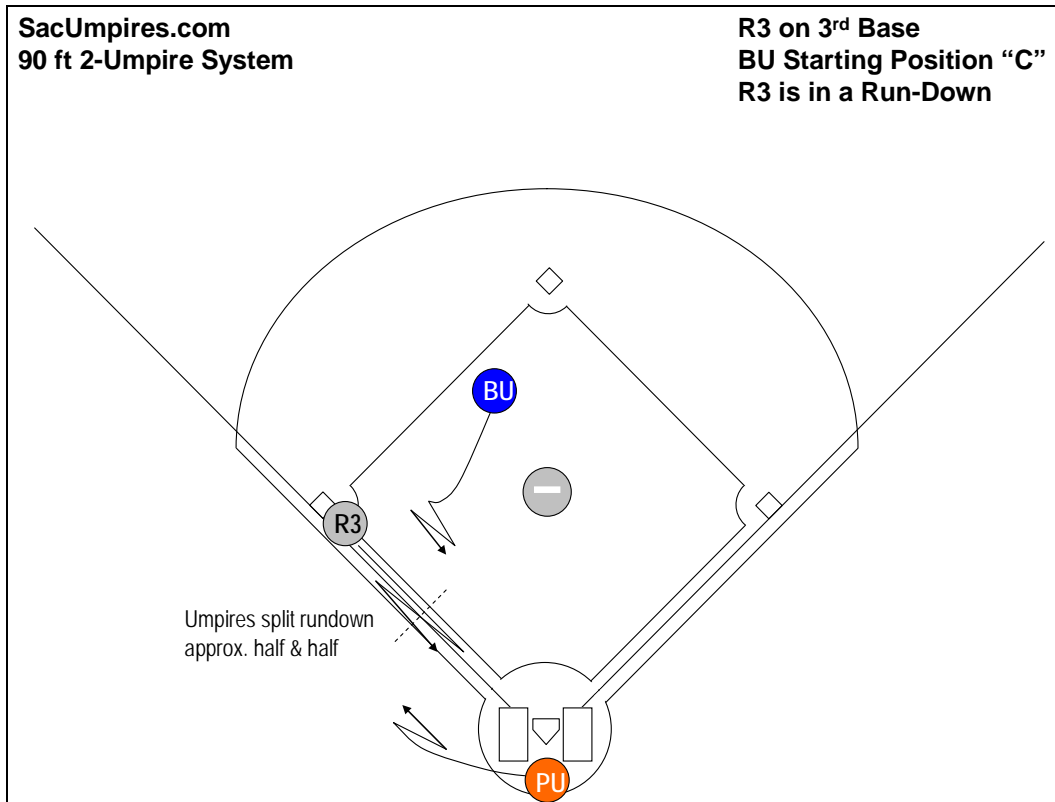


Diagram 4.2.3: R3 gets into rundown between third & home

4.3 – Steals at Home *with R3 on 3<sup>rd</sup> Base*

## 4.3.1 – R3 Stealing Home:

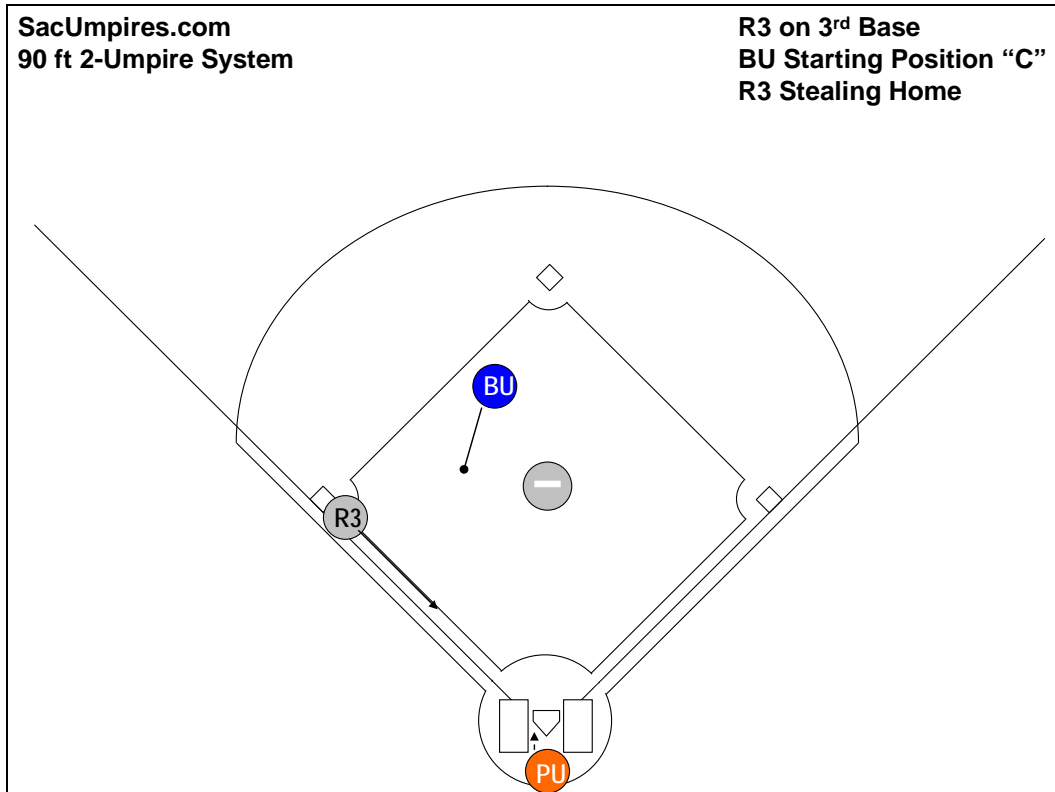


Diagram 4.3.1: R3 is stealing home

**Umpire Actions & Responsibilities:**

1. **BU**: Read the runner's break in your peripheral vision.  
**PU**: Concentrate.
2. **BU**: Remain alert for a batted ball.  
**PU**: Determine whether the pitch is a ball or strike.
3. **BU**: If the ball clears the batter, you have nothing to do unless R3 stops and retreats to 3<sup>rd</sup>.  
**PU**: Do not attempt to remove your mask; step forward as F2 moves to apply the tag; observe the action as best you can.
4. **PU**: First call the pitch; second declare R3 safe or out.

## 4.4 – Ground Balls to the Infield *with R3 on 3<sup>rd</sup> Base*

### 4.4.1 – PU Mechanics on a Ground Ball to the Infield with R3 on 3<sup>rd</sup> (Not Rolling Up Either Base Line):

- PU will stay home.
- On a ground ball to the infield, PU will swing out from behind home plate a few feet into foul territory in the direction of 3<sup>rd</sup> base to observe the play.
- **(Primary/Secondary Responsibilities):** With a ground ball on the infield, if the ball is thrown to 1<sup>st</sup> base for a play on BR, PU will have responsibility for the three items referred to below:
  - PU will be watching for **interference** by BR while out of the 45-foot lane. Should PU see such an infraction, he should make the call. This is not to say, however, that BU may never make such a call. For example, if BU observes BR interfere with the play at 1<sup>st</sup> base while *clearly* out of the 45-foot lane, it is of course permissible for BU to make this call also.
  - PU will be ready for any **overthrows** at 1<sup>st</sup> base. If PU sees the ball being overthrown at 1<sup>st</sup> base, he will immediately and rapidly move with the overthrow and take responsibility for the ball going out of play.
  - PU is also in position to help on **"swipe tags"** on BR at 1<sup>st</sup> base. Although this is rarely used, it is permissible for BU to ask for help on a "swipe tag" on this play – if, for some reason, BU does not have a good look at the play. (Note that the "appeal" should be initiated by BU *immediately* and *before* a confrontation with a player or manager occurs.) The terminology by BU would be, "Bill, did he tag him?" or "Bill, do you have a tag?" while pointing to PU. The response by PU would be a **very emphatic**, "Yes! He's out on the tag!" or "No! He missed him!" while using a strong visual signal.
- PU must be prepared to move into position for the play at home plate on R3 from 3<sup>rd</sup> base.

### 4.4.2 – PU's Mechanics with a Ground Ball Up Either Base Line with R3 on 3<sup>rd</sup> Base:

- PU must come out from behind the plate and be prepared to make a fair/foul decision on the ball.
- **(Primary/Secondary Responsibilities):** With a ground ball up either base line, if the ball is thrown to 1<sup>st</sup> base for a play on BR, PU will have responsibility for the three items discussed in Section 4.4.1 above (interference, overthrows & "swipe tags").
- PU must also be prepared on ground balls up either line for an initial play at the plate as well as being ready for situations when a subsequent play is made at home plate after an initial play elsewhere (see Diagrams 4.4.2-a and 4.4.2-b).
- **If the Ball Is Up the 3<sup>rd</sup> Base Line:**
  - If the ground ball is up the *3<sup>rd</sup> base line*, PU will usually take the fair/foul from *a step or two* up the 3<sup>rd</sup> base line, being prepared to "bounce" back into position immediately for any play at the plate.
  - When the ball is rolling down the 3<sup>rd</sup> base line in such a way that PU will *not* be able to move down the 3<sup>rd</sup> base line at all, PU must take the fair/foul from *behind the plate*, straddling the 3<sup>rd</sup> base line extended (for example, a suicide squeeze play or any other play where it is apparent that R3 from 3<sup>rd</sup> will attempt to score on the ground ball).
- **If the Ball Is Up the 1<sup>st</sup> Base Line:**
  - If the ground ball is up the *1<sup>st</sup> base line*, PU will take the fair/foul from *behind the plate*, straddling the 1<sup>st</sup> base line extended.

### 4.4.3 – BU Mechanics on a Ground Ball to the Infield with R3 on 3<sup>rd</sup>:

- BU will step up and turn with the ball.
- BU will *"drift"* a few steps in the direction of the 45-foot line on the 1<sup>st</sup> base side, anticipating a play at 1<sup>st</sup> base.
- BU will cover all plays at 1<sup>st</sup>, 2<sup>nd</sup> and 3<sup>rd</sup>.
- However, BU must be aware of situations where the play might be made at 3<sup>rd</sup> base instead, and consequently he must react with *good anticipation* as to how the play may develop.
- If the play goes to 1<sup>st</sup>, BU will take a few more steps towards the 45-foot line, set, and make the call at 1<sup>st</sup> base.
- *Immediately after* the play at 1<sup>st</sup>, BU must quickly *"bounce"* towards R3 at 3<sup>rd</sup>, always *"anticipating"* a subsequent throw to that base.
- Because of the lead runner at 3<sup>rd</sup>, BU will not be able to get exceptionally close to the play at 1<sup>st</sup> base, although with two out he should get a bit *closer* to the play than he would with less than two out.

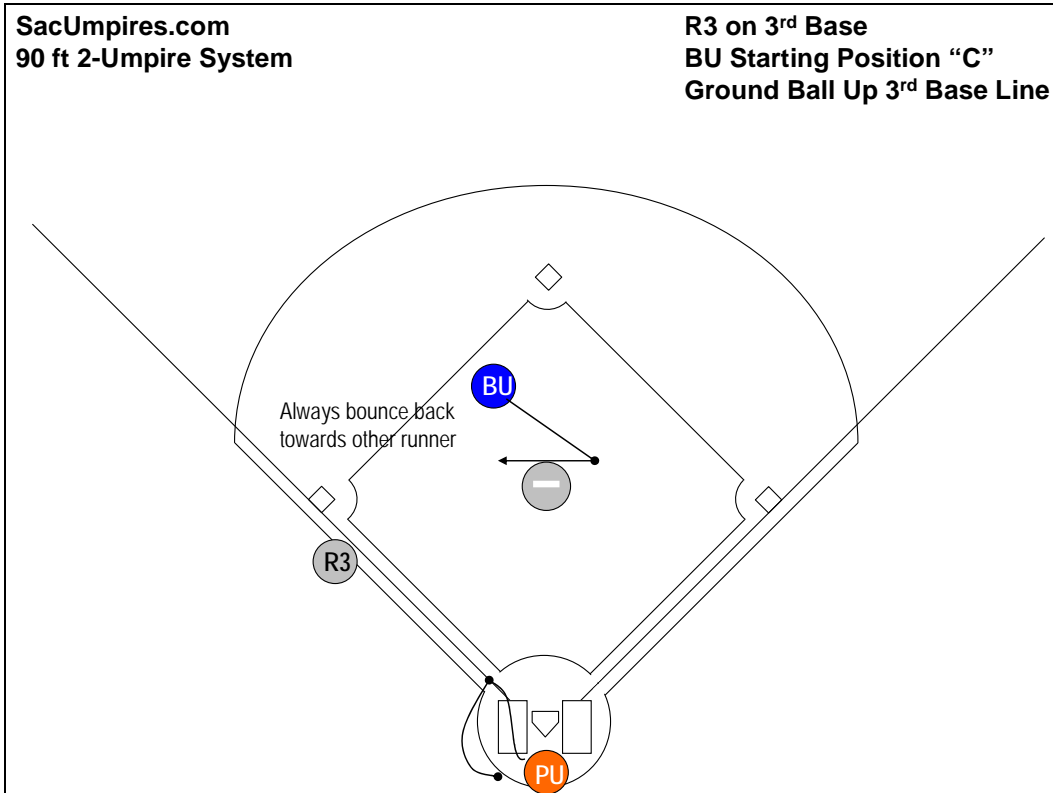


Diagram 4.4.2-a: Ground ball up 3<sup>rd</sup> base line with play going to 1<sup>st</sup> base (R3 is holding) and BU "bouncing" back.

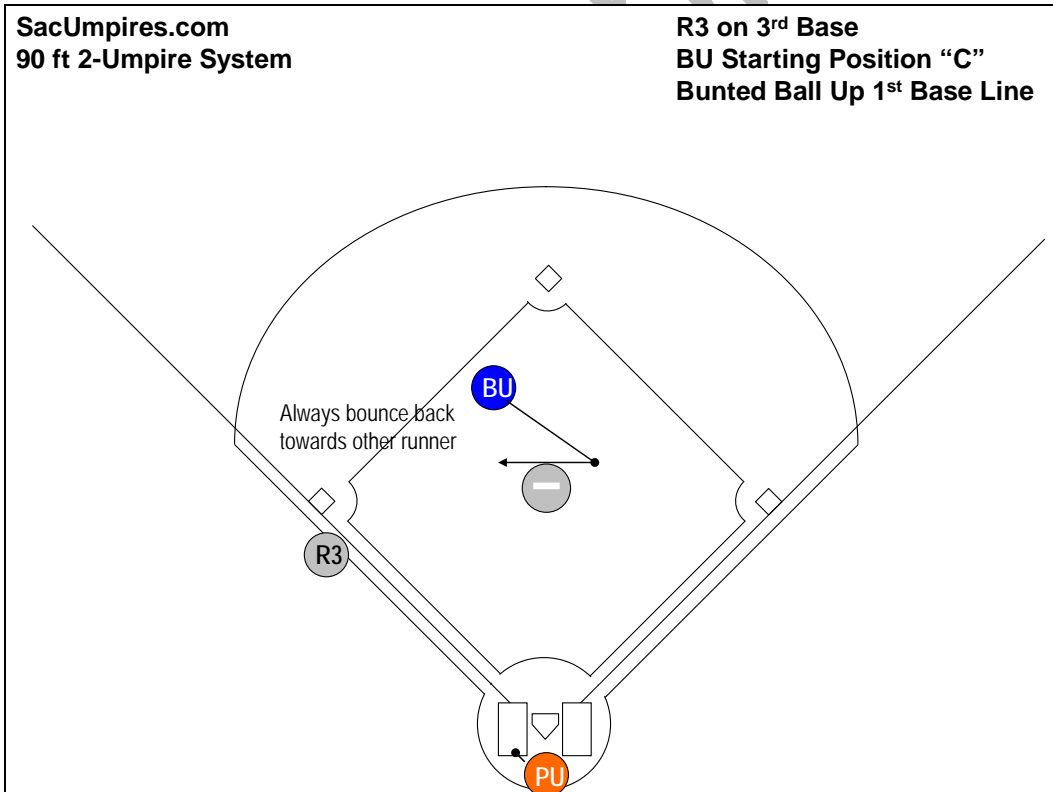


Diagram 4.4.2-b: Bunted ball up the first base line with R3 on 3<sup>rd</sup> base

## 4.5 – Fly Balls and Line Drives to the Infield *with R3 on 3<sup>rd</sup> Base*

### 4.5.1 – Responsibilities for a Fly Ball or Line Drive to the Infield with R3 on 3<sup>rd</sup> (See Diagram 4.5.1):

- PU is responsible for all fly balls and line drives to F1.
- PU will take all fly balls fielded by F2.
- PU will also be responsible for all fly balls fielded by F3 or F5 is *moving towards the foul line*.
- BU is responsible for all other fly balls and line drives to the infield.

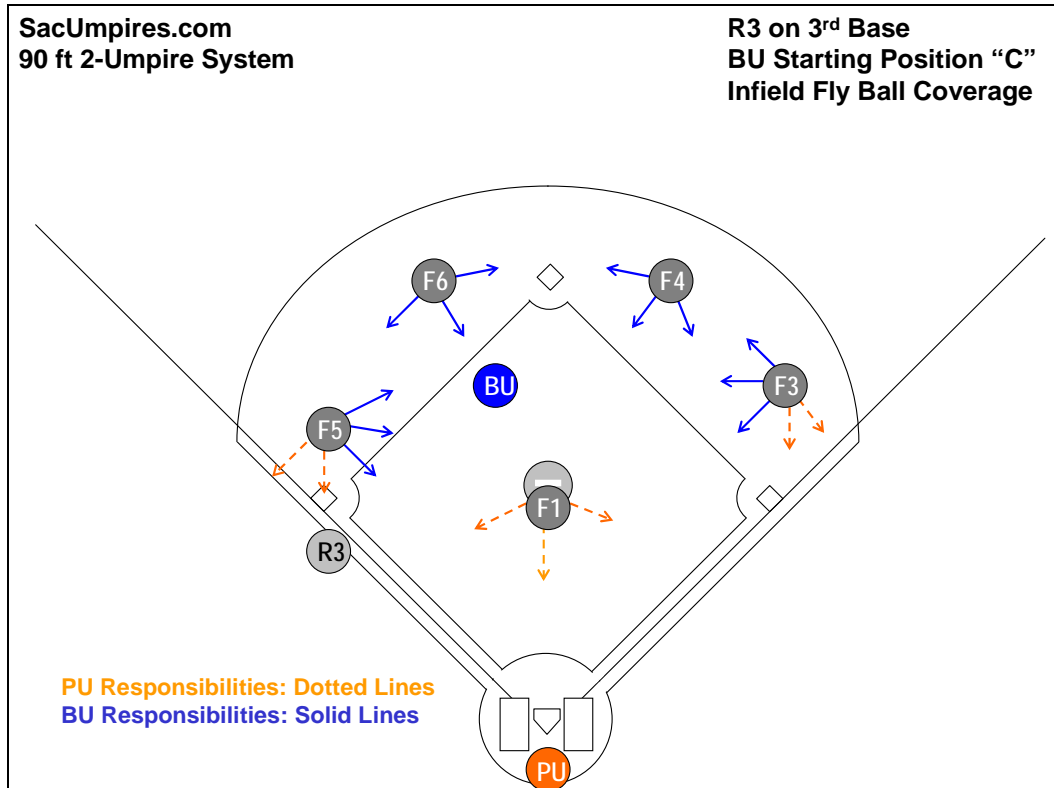


Diagram 4.5.1: Responsibilities for fly balls and line drives to the I with R3 on 3<sup>rd</sup> base only

### 4.5.2 – PU's Mechanics When a Fly Ball or Line Drive Is Hit to the Infield with R3 on 3<sup>rd</sup>:

- PU will swing out from behind home plate a few feet into foul territory in the direction of 3<sup>rd</sup> base to observe the play (*unless* the ball is hit near the foul lines).
- If the fly ball is fielded in the vicinity of the 1<sup>st</sup> base line, PU normally will take this play from behind home plate, straddling the 1<sup>st</sup> base line extended.
- If the fly ball is fielded in the vicinity of the 3<sup>rd</sup> base line, PU should straddle the line *a step or two up the line* to make the call unless two are out, in which case PU should take the play from behind the plate, straddling the 3<sup>rd</sup> base line extended.
- PU's positioning on line drives to the infield would be the same as just mentioned for fly balls to the infield.

### 4.5.3 – BU's Mechanics When a Fly Ball or Line Drive Is Hit to the Infield with R3 on 3<sup>rd</sup>:

- BU will step up, turn with the ball and face the infielder. It is permissible for BU to take a couple steps backward towards the mound to open up the field of play as the fly ball is hit. (NOTE: We call this area behind the mound the *"working area"* for BU. From this "working area" BU is in good position for observing his responsibilities and for moving into proper position as plays develop.) When BU has multiple runner responsibilities, if no play develops after the base hit, BU should maintain his basic position in this "working area" and *not* be drawn unnecessarily towards a base without a potential play developing there.
- In fact, if the infielder is moving *in* to make the play, BU may have to move several steps – including to either side of the mound – in order to give the fielder room to make the play.
- BU must guard against taking himself completely out of position in case the ball should be dropped.
- If the ball is caught, BU has responsibility for any play at 3<sup>rd</sup> base on R3 on 3<sup>rd</sup>.
- If the ball is dropped, BU has responsibility for all plays at 1<sup>st</sup>, 2<sup>nd</sup> and 3<sup>rd</sup>.
- BU will glance back over his shoulder at 1<sup>st</sup> base as necessary to watch BR touch 1<sup>st</sup> base.

### 4.5.4 – Remember to Vary the Intensity of Voice & Signal:

- If the fly ball is a "routine" catch, the umpire need not call or signal anything.
- However, if the catch turns out to be a "difficult" play, the umpire would sell the call as needed.

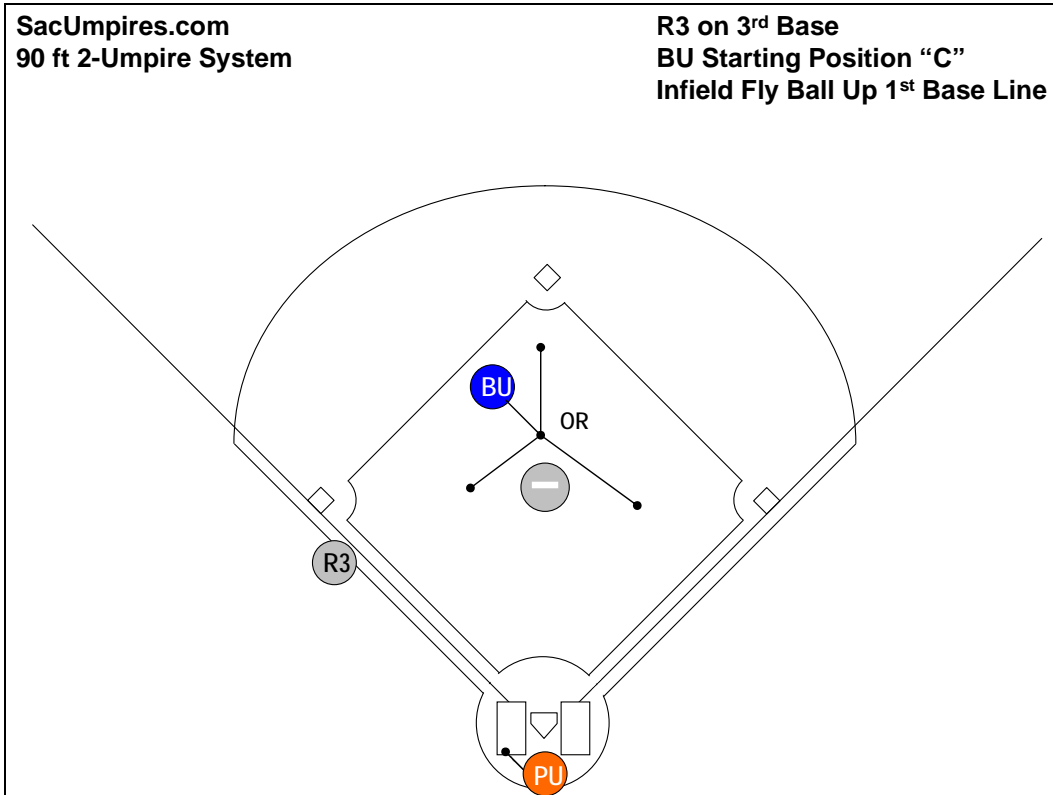


Diagram 4.5.2-a: Fly Balls and Line Drives to the Infield

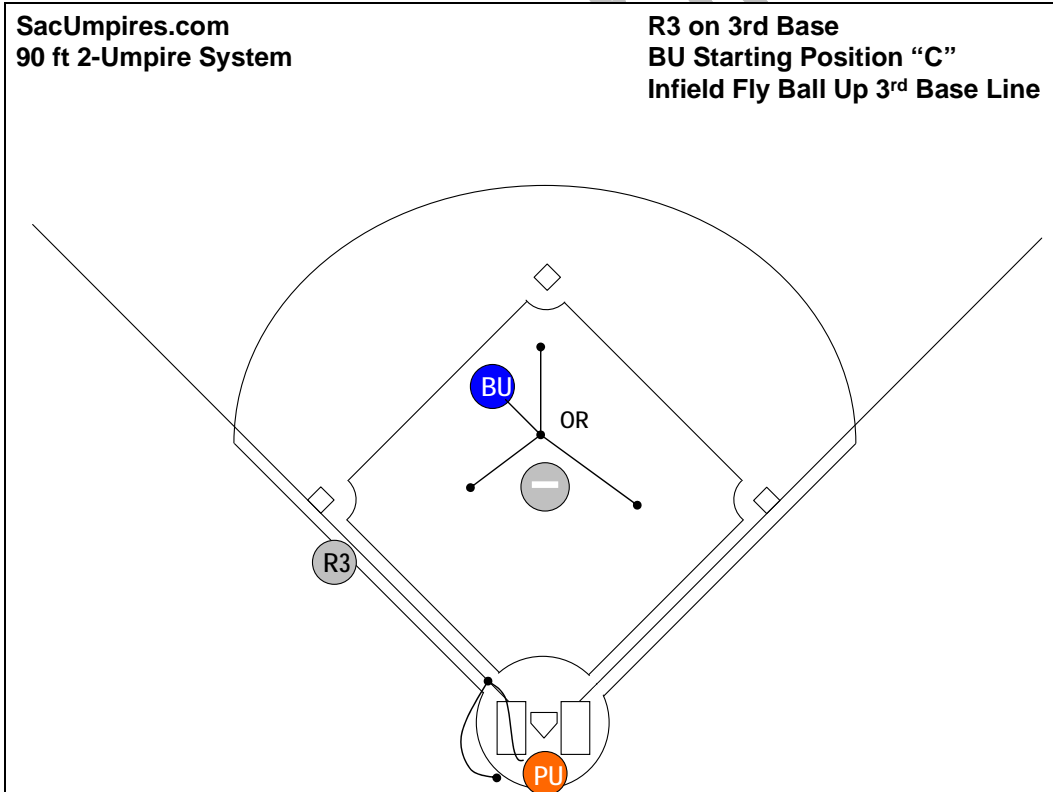


Diagram 4.5.2-b: Fly Balls and Line Drives to the Infield

### 4.6 – Fly Balls and Line Drives to the Outfield *with R3 on 3<sup>rd</sup> Base*

#### 4.6.1 – Responsibilities for a Fly Ball and Line Drive to the Outfield with R3 on 3<sup>rd</sup> (See Diagram 4.6.1):

- Fly balls (or line drives) from F7 *straight in* all the way to F9 *straight in* (sometimes referred to as the “80%” or the “V”) belong to the **base umpire (BU)**.
- Fly balls (or line drives) where F7 moves any distance towards the *left field line* - his *right* - (sometimes referred to as the “10%”) belong to the **plate umpire (PU)**.
- Fly balls (or line drives) where F9 moves any distance towards the *right field line* - his *left* - (sometimes referred to as the “10%”) belong to the **plate umpire (PU)**

**Important Note:** It is important that the two umpires **communicate** after the ball is hit on fly balls and line drives to the outfield, particularly when balls are hit to F7 or F9. The reason here is so that each umpire is certain who has responsibility for any given fly ball or line drive to the outfield.

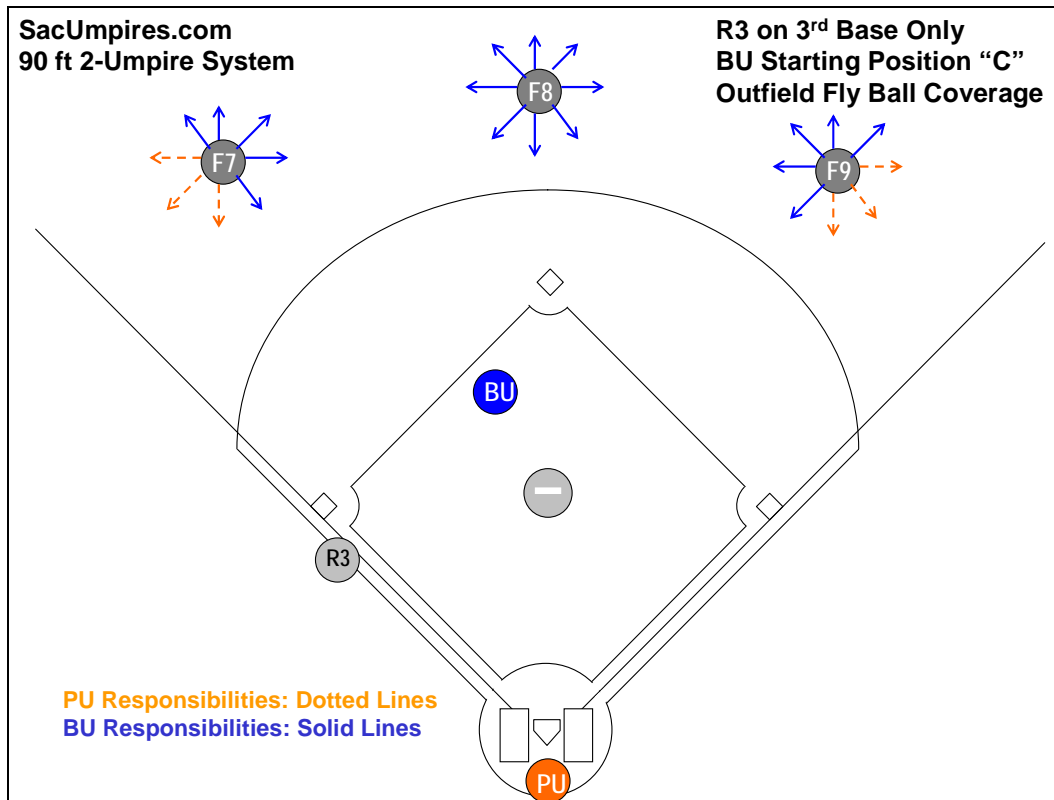


Diagram 4.6.1: Fly Balls and Line Drive to the Outfield with R3 on base only – This coverage is sometimes referred to as “80% - 20%” or “the cone” fly ball coverage.

#### 4.6.2 – Fly Ball or Line Drive to the Outfield with R3 on 3<sup>rd</sup>:

- PU is responsible for R3 tagging up at 3<sup>rd</sup> base.
- If the fly ball or line drive belongs to BU, PU will swing out from the plate *several steps* into foul territory to his left (usually in the general direction of the 3<sup>rd</sup> base dugout) in order to line up the tag at 3<sup>rd</sup> base.
- After the tag-up, PU will immediately break quickly (“bust”) back home, setting up for any possible play at the plate on R3.
- The actual distance and direction PU swings out to his left will *vary* depending on the direction the fly ball is hit, and in most cases it will not be possible for PU to have an exact line on the tag-up; however, this swinging out to the left will help decrease the angle on lining up the tag at 3<sup>rd</sup> base.
- If the fly ball or line drive belongs to the **plate umpire (PU)** (i.e., if the fly ball or line drive causes either F7 or F9 to move any distance towards the line), PU must **communicate** to his partner that PU has responsibility for the ball.
- BU is responsible for R1 touching 1<sup>st</sup> base, any play on R3 back into 3<sup>rd</sup> and any play at 1<sup>st</sup>, 2<sup>nd</sup> or 3<sup>rd</sup> if the ball is not caught.
- BU will step up, turn with the ball, and back up *only two or three steps* towards the mound to open up the playing field. [NOTE: We call this area behind the mound the “**working area**” for BU. From this “working area” BU is in good position for observing his responsibilities and for moving into proper position as plays develop.] When BU has multiple runner responsibilities, if no play develops after the base hit, BU should maintain his basic position in this “working area” and *not* be drawn unnecessarily towards a base without a potential play developing there.
- BU should use the “**pause-read-react**” technique to allow the play to develop and reveal enough information to determine whether the play is a “trouble” play or not. After the ball has been determined to belong to BU (the ball is batted to BU’s outfield coverage area), BU will:
  - “**Pause**” (*hesitate momentarily to gather information about the developing play*)
  - “**Read**” (*focus his attention on the reactions of the outfielder(s) by taking his eye off the ball, zeroing in on the of the outfielders movements, “keying” off the outfielders reactions, and watching for—and determining if the outfielder’s reactions reflect “trouble” or reflect “trouble” cues.*)
  - “**React**” (*pivot into the infield on “routine” outfielder reactions or go out on “trouble” reactions to the ball*). If there is any doubt about whether a play is “trouble” or not, BU should go out.
- “**Difficult**” plays are defined as *home runs; balls hit off the outfield wall; diving catches; catches made by the outfield below his waist on a dead run; catches made with fielders converging on the ball; catches by the outfielder with his back towards the infield; catches made by the outfielder at the wall or on the warning track; etc.*

#### 4.6.3 – “Routine” Outfield Fly Ball or Line Drive in BU’s Responsibility Area with R3 on 3<sup>rd</sup>:

- BU will use the “**step-up, turn & face the ball**” and “**pause-read-react**” techniques (described in section 4.6.2) in deciding whether or not he should move to the edge of the grass (See Diagram 4.6.3).
- BU will “drift” back two or three steps towards the mound (into the “working area”) in order to open up the playing field to observe the catch and watch BR touch 1<sup>st</sup>. By backing up these few steps towards the mound, it will be easier for BU to cover these responsibilities.
- BU is responsible for the catch/no catch. If the catch is “routine”, BU need not call or signal anything.
- If the ball is not caught, BU is also responsible for the touch at 1<sup>st</sup> base by BR, and any following plays on the bases.

#### 4.6.4 – “Difficult” Outfield Fly Ball or Line Drive to BU’s Responsibility Area with R3 on 3<sup>rd</sup>:

- BU will use the **step-up, turn & face the ball** and **pause-read-react** techniques (described in section 4.6.2) in deciding whether or not he should move to the edge of the grass (See Diagram 4.6.4).
- If the fly ball or line drive results in a “difficult” play, BU should again *move to the edge of the infield grass in the direction the ball is hit* to cover the play, but never leave the infield grass.
- BU will *sell* the call from this position.
- BU is also responsible for the touch at 1<sup>st</sup> base by BR, and this would be accomplished by BU glancing over his shoulder at 1<sup>st</sup> base if the ball is not caught.
- BU must **immediately “bounce”** back from the edge of the infield grass to pick up responsibility of the base runners.

#### 4.6.5 – “Difficult” Outfield Fly Ball or Line Drive Down the Right Field Line in PU’s Area with R3 on 3<sup>rd</sup> (If the fly ball or line drive causes F9 to move any distance towards the right field line):

- BU will use the “**step-up, turn & face the ball**” and “**pause-read-react**” techniques (described in section 4.6.2) in deciding whether or not he should move to the edge of the grass (See Diagram 4.6.5).
- PU **MUST** communicate with his partner that PU has responsibility for the ball in his area.
- PU will communicate to his partner, “I’m on the line, Bill!” to indicate he has responsibility of the ball.
- PU will move up the 1<sup>st</sup> base line to observe and rule on the play.
- It will generally not be possible for PU to move very far up the 1<sup>st</sup> base line to rule on the ball because of the potential play at the plate.
- PU’s position will *vary* based on the location of the ball, the location of the fielders, and whether or not R3 on 3<sup>rd</sup> base is tagging.
- PU will only move up the 1<sup>st</sup> base line *only so far that he is CERTAIN that he will have ample time to get back to home plate* for any possible play there on R3 from 3<sup>rd</sup> base.

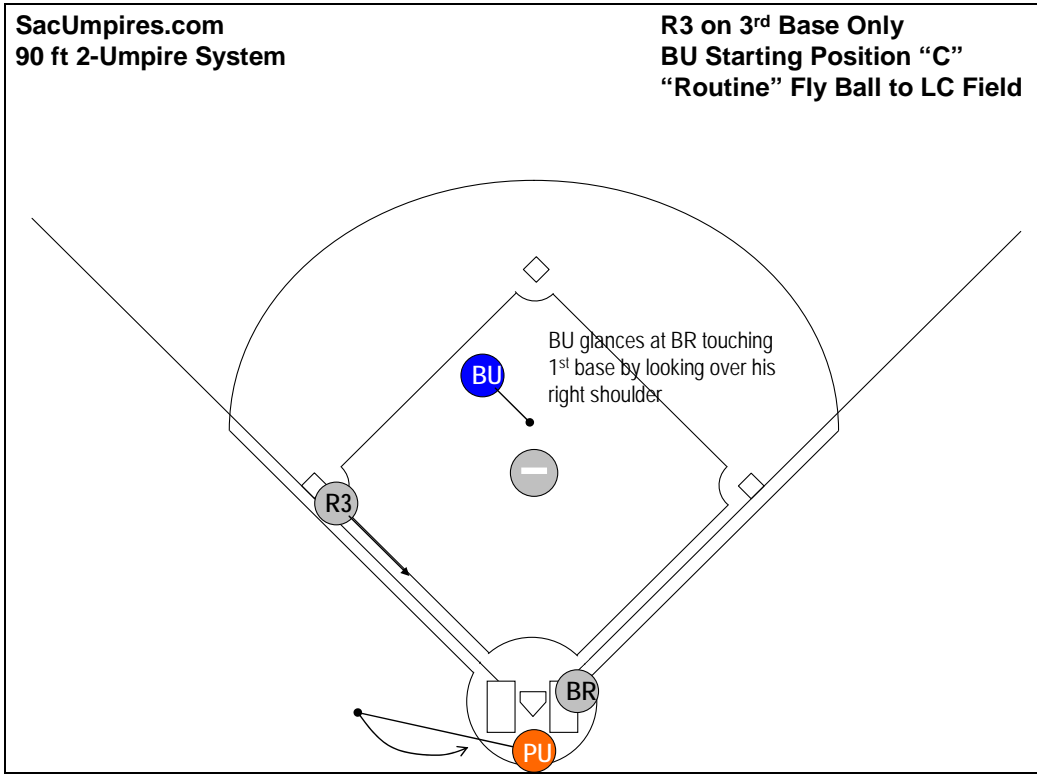


Diagram 4.6.3: The batter "routinely" flies to the middle of the outfield

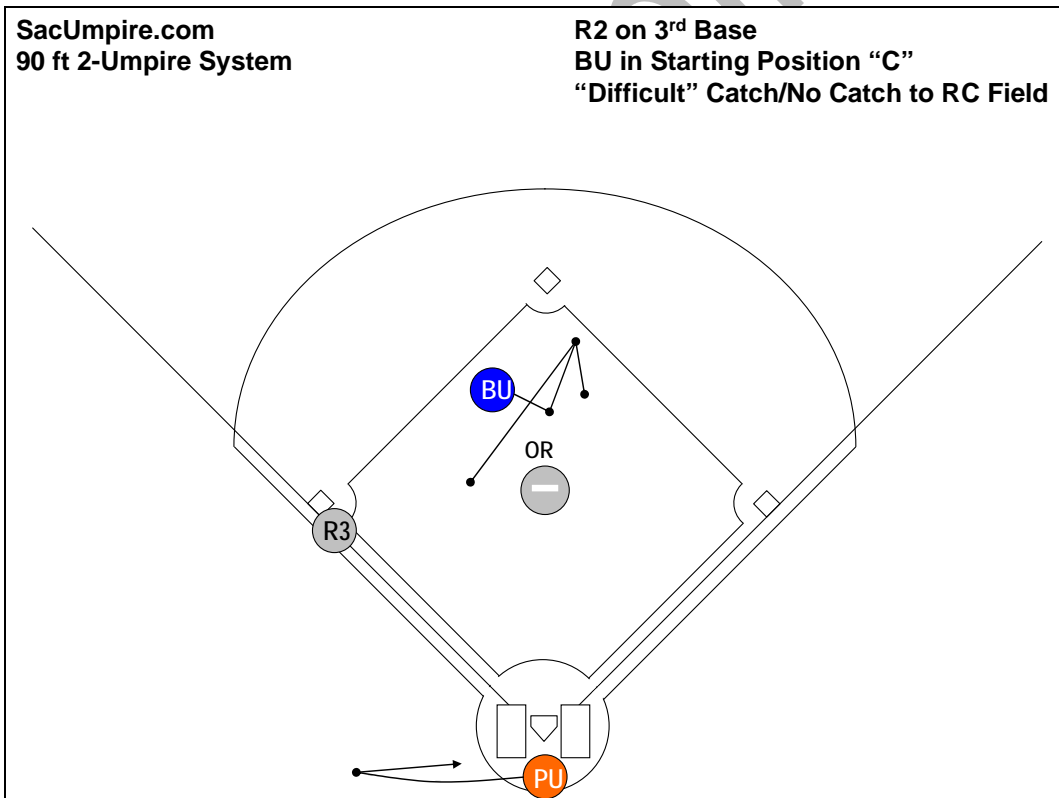


Diagram 4.6.4: "Difficult" catch/no catch in right-center with R3 on 3<sup>rd</sup> base only

4.6.6 – “Difficult” Outfield Fly Ball or Line Drive Down the Left Field Line in PU’s Area with R3 on 3<sup>rd</sup> (If the fly ball or line drive causes F7 to move any distance to his right):

- BU will use the *step-up, turn & face the ball* and *pause-read-react* techniques (described in section 4.6.2) in deciding whether or not he should move to the edge of the grass (See Diagram 4.6.6).
- PU will take the ball and communicate loudly to his partner, “I’ve got the ball, Bill!”, “That’s my ball, Bill!” or “I’m on the line, Bill!”
- PU must be in a good position for any possible fair/foul or catch/no catch down the right field line.
- PU will move up the 3<sup>rd</sup> base line remembering that he will go up the line *only so far that he is certain he will have ample time to get back to home plate and set up in proper position for any play on R3 coming from 3<sup>rd</sup> base for any possible play there.*
- PU’s position will vary, depending on the location of the ball, the speed of the runner, whether or not the runner is tagging, the number of outs, etc.
- PU also has responsibility for the tag-up at 3<sup>rd</sup> base. PU will glance at R3 as the ball is touched – This is a difficult mechanic.
- PU must remember that the first priority is *the ball*.
- PU will come to a stop to see the play and make the call.
- Since PU has responsibility for the tag-up at 3<sup>rd</sup> base, PU must take a quick glance over his left shoulder at 3<sup>rd</sup> base after the ball is touched to judge the tag-up – This is a difficult mechanic for PU.
- After PU has ruled on the play (and watched for the tag-up), PU will normally “bounce” back home **IMMEDIATELY** and be ready for any play at the plate.
- PU still has responsibility for the ball going out of play, and so there may be occasions when he may “linger” on the line, watching the ball; but normally he will “bust” back home.

4.6.7 – Remember: The First Priority – *Watching the Ball*:

- IT IS VERY IMPORTANT TO NOTE AGAIN THAT IN FLY BALL COVERAGE, THE FIRST PRIORITY IS THE BALL.
- There could be an occasion when BU may miss BR touching 1<sup>st</sup> base because he had to keep his eye on the ball.
- This again is a drawback of the two-umpire system.

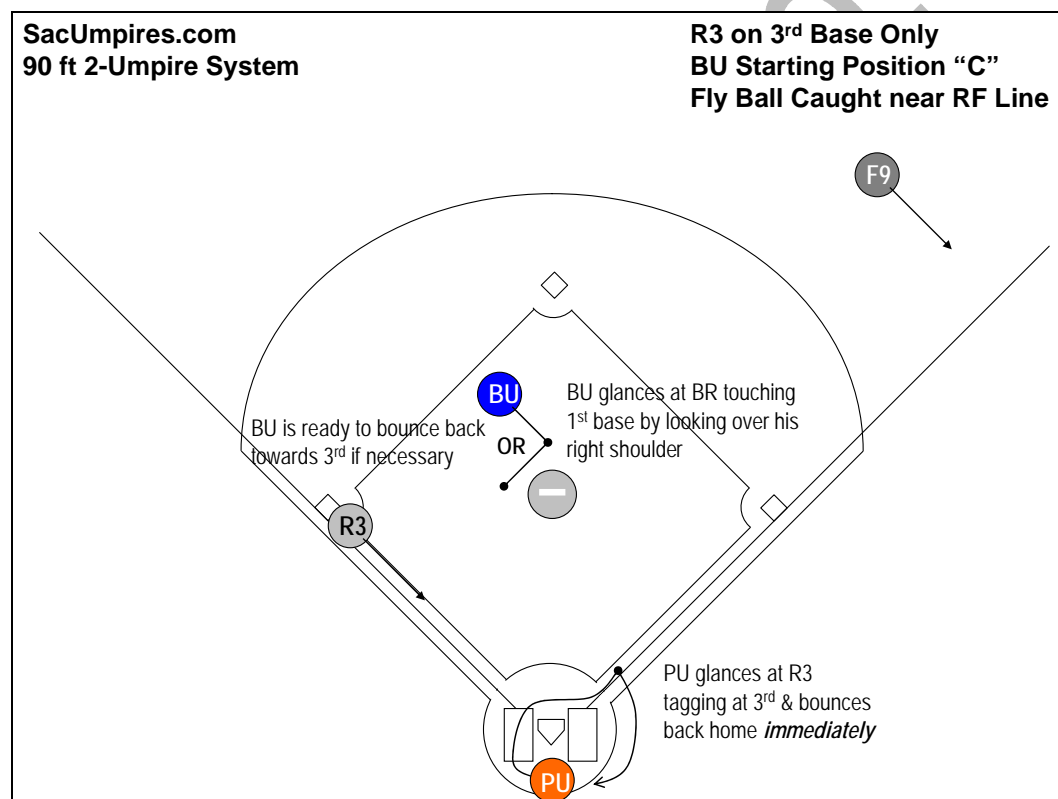


Diagram 4.6.5: PU taking fly ball caught near right field line, glancing at R3 tagging at 3<sup>rd</sup> base, and returning home.

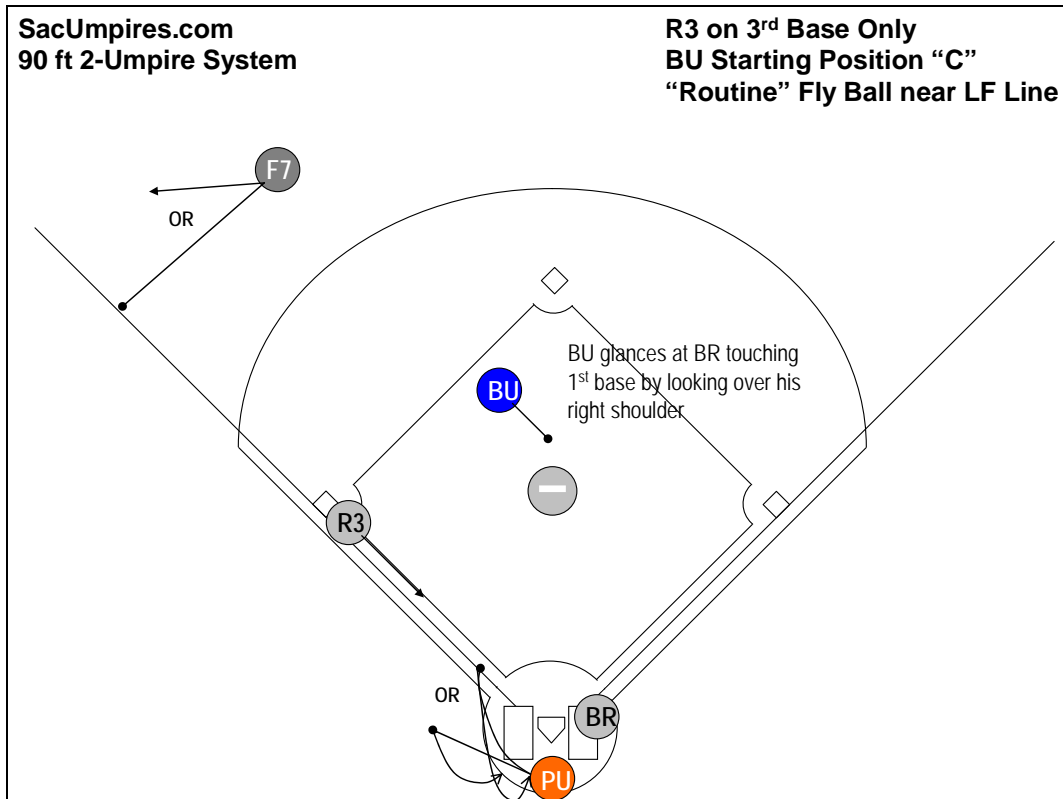


Diagram 4.6.6: F7 moves toward the line to field a fly ball

SacUmpires.com

## 4.7 – Base Hits to the Outfield *with R3 on 3<sup>rd</sup> Base*

4.7.1 – Responsibilities on an “Obvious” (“Clean”) Base Hit to the Outfield with R3 on 3<sup>rd</sup>, (i.e., no possible fair/foul or catch/ no catch on the play)

- PU will stay home and have responsibility for all touches of home plate.
- BU is responsible for all base touches and plays at 1<sup>st</sup>, 2<sup>nd</sup> and 3<sup>rd</sup>.

4.7.2 – Mechanics on “Obvious” (“Clean”) Base Hit to the Outfield with R3 on 3<sup>rd</sup> Base, (i.e., no possible fair/foul or catch/ no catch on the play) (See Diagram 4.7.2):

- PU will swing out behind home plate a few feet into foul territory in the direction of 3<sup>rd</sup> base to observe the play.
- PU will watch R3 from 3<sup>rd</sup> touch home plate.
- As the ball is hit to the outfield, BU will step up, turn with the ball, and back up *only two or three steps* towards the mound (into the “working area”) to open up the playing field.
- BU must be ready to move into position for any play on the bases, and he *will let the ball take him to the play* – keeping in mind the concepts of proper distance and angle to the play as well as being set to see the play and make the call. (See Section 4.7.3 – “Staying within the Working Area”)
- After a “clean” base hit where R3 from 3<sup>rd</sup> base has scored, BU should realize that he now has responsibility for only *one runner* (BR). BU may “shade” or “drift” in the direction of BR (leaving the “working area”) after R3 from 3<sup>rd</sup> has scored, but without over-committing. (See Section 4.7.4 – “Shading” Concept)
- BU must be ready to move into position for any play on the bases, and he will let the ball take him to the play – keeping in mind the concepts of proper distance and angle to the play as well as being set to see the play and make the call.
- When the play is over, BU should be “shaded” more towards the vicinity of BR even if no play is imminent.
- If a *play* on BR is imminent, then of course BU should let the ball take him to the play, and he should get as close as possible to the play (see Section 4.7.4 – “Shading” Concept).

4.7.3 – Staying within the “Working Area”:

- As the ball is being thrown to the infield with multiple runners on base, BU should not “drift” (or commit) unnecessarily towards a base.
- BU should let the ball take him to the play
- If no play develops (or is anticipated) on the bases, he would basically maintain his position within the “working area.”
- Only when BU anticipates the potential for a play should he move out of the “working area” and into a position for his play.
- This is an important concept and mechanic and applies to all situations when more than one runner is on base.

4.7.4 – “Shading” Concept: The concept of “shading”, “sliding”, or “drifting” closer to the umpire’s **sole runner** holds in **all** situations, not just with R3 on 3<sup>rd</sup> base. That is, whenever a play develops so that BU is with **only one runner**, the umpire should “slide”, (“shade”) closer to that runner since that is his only responsibility. **THIS IS AN IMPORTANT CONCEPT AND MECHANIC.**

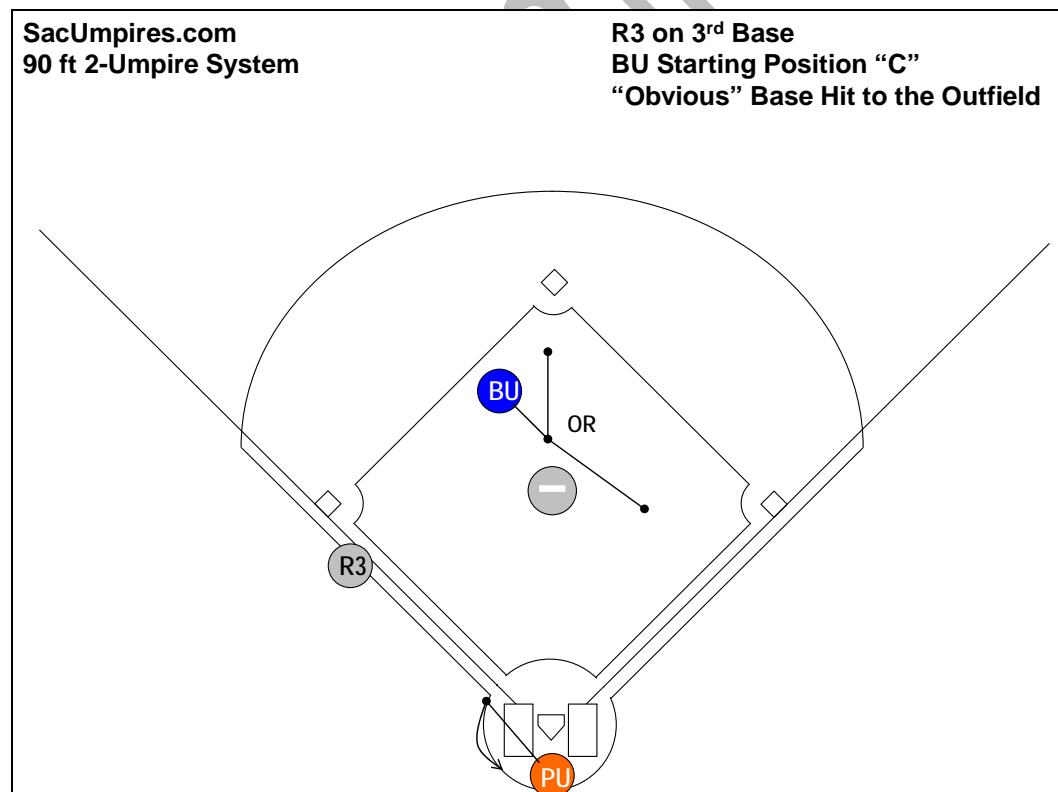


Diagram 4.7.2: “Obvious” base hit to outfield with R3 on 3<sup>rd</sup> base only